



藥物不良反應工作小組藥物安全警訊通告 107.04

**食品藥物管理署(TFDA)用藥安全資訊風險溝通：**

**Clarithromycin使用於有心臟病病人時可能會增加心臟疾病或死亡的風險**

**摘要說明：**

CLARICOR trial 為一項大型前瞻性隨機分派臨床試驗，針對 4373 名有冠狀動脈心臟病病人，比較使用兩週 clarithromycin 500mg/day 與安慰劑長期追蹤的研究。結果顯示 clarithromycin 組相較於使用安慰劑者，死亡率較高，特別是腦血管疾病相關及非住院病人之心血管疾病病人(0-3 年)的死亡率。其中，clarithromycin 組未服用 Statin 類藥品的病人死亡率比有服用 Statin 類藥品的病人高。目前尚無法確知其機轉為何，且本研究結果無法確知其結論是否適用於非心臟疾病病人。

Klaricid® 中文仿單於禁忌、警語及注意事項和藥物交互作用中已指出「不應使用於有 QT 延長（先天性或曾有 QT 延長紀錄者）或心室心律不整病史，包括 torsades de pointes（多型性心室心律不整）病史的病患。」、「應避免使用於有低血鉀症且未校正的病患（有 QT 延長的風險）。」、「病患患有電解質紊亂如低鎂血症。Clarithromycin 不應給與低鎂血症病患」、「病患併用其他可能造成 QT 延長相關的藥物時，須謹慎使用」。

**醫療人員注意事項：**

- 1) 使用處方含 clarithromycin 成分藥品前，應謹慎評估病人使用該藥品之臨床效益與風險，尤其是使用於有心臟疾病之病人，可以考慮使用其他替代抗生素，即使僅為短期使用。
- 2) 醫療人員應告知有心臟疾病的病人及其照顧者有關心血管問題相關的症狀與徵兆，出現胸痛、呼吸短促或呼吸困難、單一部位或單側身體無力或疼痛、說話模糊不清等症狀，可能為心肌梗塞或中風之前兆，如出現不適症狀，應儘速回診就醫。
- 3) 醫療人員若懷疑病人因為使用藥品導致不良反應發生時，請立即線上通報藥物不良反應及登入於藥物過敏/不良反應記錄中。

**院內品項：**

**Klaricid® (Clarithromycin) 500 mg/tab 開羅理膜衣錠**

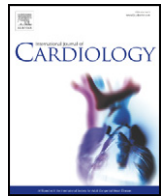
北醫藥物不良反應工作小組 敬啟  
臨床藥學組 呂懷恩 藥師  
(分機 8443/8444)

# Clarithromycin 成分藥品安全資訊風險溝通表

日期：107/3

藥品成分	Clarithromycin
藥品名稱 及許可證字號	衛生福利部核准含 clarithromycin 成分藥品製劑許可證共 19 張。網址： <a href="http://www.fda.gov.tw/MLMS/H0001.aspx">http://www.fda.gov.tw/MLMS/H0001.aspx</a>
適應症	上、下呼吸道有感受性細菌所引起之感染症。可與 omeprazole 併用治療幽門螺旋桿菌(H. PYLORI)有關之十二指腸潰瘍。
藥理作用機轉	Clarithromycin藉由與感受性細菌的50S核糖體次單位結合，及抑制蛋白質的合成來發揮其對抗細菌的作用。
訊息緣由	2018/2/22 美國 FDA 發布含 clarithromycin 成分藥品使用於有心臟疾病之病人可能會增加心臟疾病或死亡的風險之安全性資訊。網址： <a href="https://www.fda.gov/Safety/MedWatch/SafetyInformation/SafetyAlertsforHumanMedicalProducts/ucm597862.htm">https://www.fda.gov/Safety/MedWatch/SafetyInformation/SafetyAlertsforHumanMedicalProducts/ucm597862.htm</a>
藥品安全有關資訊 分析及描述	<ol style="list-style-type: none"> <li>1. 一項大型前瞻性隨機分派臨床試驗 (CLARICOR) 結果顯示，曾使用含 clarithromycin 成分藥品兩週療程之冠狀動脈心臟病病人，經追蹤一年或更長時間後發現，相較於使用安慰劑者，死亡率較高。目前尚無法確知其機轉為何。</li> <li>2. 因 CLARICOR 試驗僅涵蓋冠狀動脈心臟病病人，且目前並無前瞻性隨機分派試驗針對非心臟疾病病人使用含 clarithromycin 成分藥品之長期安全性進行評估，故無法確知其結論是否適用於非心臟疾病病人。</li> <li>3. 美國 FDA 已更新仿單包括上述安全資訊。</li> </ol>
食品藥物管理署風 險溝通說明	<p>◎ <b>食品藥物管理署說明：</b></p> <ol style="list-style-type: none"> <li>1. 經查，國內核准含clarithromycin成分藥品之中文仿單已於「警語及注意事項」刊載『clarithromycin 可能有造成 QT 延長的風險，因此，用於病患患有冠狀動脈疾病、嚴重心臟功能不全、低鎂血症、心搏徐緩（&lt;50次），或併用其他可能造成QT 延長相關的藥物時，須謹慎使用。Clarithromycin不應使用於患者有先天性或記錄曾有QT間隔延長或心室性心律不整的病史。』，惟未完全涵蓋上述安全資訊內容。</li> <li>2. 針對是否更新含clarithromycin成分藥品之中文仿單以包含上述安全資訊，本署現正評估中。</li> </ol> <p>◎ <b>醫療人員應注意事項：</b></p> <ol style="list-style-type: none"> <li>1. 處方含 clarithromycin 成分藥品前，應謹慎評估病人使用該藥品之臨床效益與風險，尤其是使用於有心臟疾病之病人，可以考慮</li> </ol>

	<p>使用其他替代抗生素，即使僅為短期使用。</p> <p>2. 應告知有心臟疾病的病人有關心血管問題相關的症狀與徵兆，並提醒病人如出現不適症狀，應儘速回診就醫。</p> <p>◎ <b>病人應注意事項：</b></p> <p>1. 若有心臟疾病應主動告知醫療人員，尤其是將要使用抗生素治療感染時。</p> <p>2. 若有任何疑問請諮詢醫療人員，切勿於諮詢醫療人員前自行停用心血管疾病用藥或抗生素，疾病未治療可能導致嚴重的健康問題。</p> <p>3. 若出現胸痛、呼吸短促或呼吸困難、單一部位或單側身體無力或疼痛、說話模糊不清等症狀，可能為心肌梗塞或中風之前兆，應立即就醫。</p> <p>◎ 醫療人員或病人懷疑因為使用（服用）藥品導致不良反應發生時，請立即通報給衛生福利部所建置之全國藥物不良反應通報中心，並副知所屬廠商，藥物不良反應通報專線 02-2396-0100，網站：<a href="https://adr.fda.gov.tw">https://adr.fda.gov.tw</a>；衛生福利部食品藥物管理署獲知藥品安全訊息時，均會蒐集彙整相關資料進行評估，並對於新增之藥品風險採取對應之風險管控措施。</p>
--	--



# Clarithromycin for stable coronary heart disease increases all-cause and cardiovascular mortality and cerebrovascular morbidity over 10 years in the CLARICOR randomised, blinded clinical trial<sup>☆,☆☆</sup>

Per Winkel<sup>a,\*,1</sup>, Jørgen Hilden<sup>b,1</sup>, Jørgen Fischer Hansen<sup>c,1</sup>, Jens Kastrup<sup>d,1</sup>, Hans Jørn Kolmos<sup>e,1</sup>, Erik Kjølner<sup>f,1</sup>, Gorm Boje Jensen<sup>g,1</sup>, Maria Skoog<sup>a,1</sup>, Jane Lindschou<sup>a,\*,1</sup>, Christian Gluud<sup>a,\*,1</sup>, the CLARICOR trial group<sup>2</sup>

<sup>a</sup> The Copenhagen Trial Unit, Centre for Clinical Intervention Research, Department 7812, Rigshospitalet, Copenhagen University Hospital, Copenhagen, Denmark

<sup>b</sup> Department of Biostatistics, Institute of Public Health Research, Faculty of Health Sciences, University of Copenhagen, Copenhagen, Denmark

<sup>c</sup> Department of Cardiology Y, Bispebjerg Hospital, Copenhagen University Hospital, Copenhagen, Denmark

<sup>d</sup> Department of Cardiology B, The Heart Centre, Rigshospitalet, Copenhagen University Hospital, Copenhagen, Denmark

<sup>e</sup> Department of Clinical Microbiology, Odense University Hospital, Odense, Denmark

<sup>f</sup> Department of Cardiology S, Herlev Hospital, Copenhagen University Hospital, Herlev, Denmark

<sup>g</sup> Department of Cardiology, Hvidovre Hospital, Copenhagen University Hospital, Hvidovre, Denmark

## ARTICLE INFO

### Article history:

Received 10 September 2014

Received in revised form 18 December 2014

Accepted 4 January 2015

Available online 6 January 2015

### Keywords:

Clarithromycin

Stable coronary heart disease

Cardiovascular mortality

Adverse events

Adverse effects

Statin

## ABSTRACT

**Background:** The CLARICOR trial reported that clarithromycin compared with placebo increased all-cause mortality in patients with stable coronary heart disease. This study investigates the effects of clarithromycin versus placebo during 10 years follow up.

**Methods:** The CLARICOR trial is a randomised, placebo-controlled trial including 4373 patients with stable coronary heart disease. The interventions were 2 weeks of clarithromycin 500 mg a day versus placebo, 10 year follow up was performed through Danish public registers and analysed with Cox regression.

**Results:** Clarithromycin increased all-cause mortality (hazard ratio (HR): 1.10, 95% confidence interval (CI): 1.00–1.21) and cerebrovascular disease during 10 years (HR: 1.19, 95% CI: 1.02–1.38). The increased mortality and morbidity were restricted to patients not on statin at entry (HR: 1.16, 95% CI: 1.04–1.31, and HR: 1.25, 95% CI: 1.03–1.50). The assumption of constant HR during the 10 years was violated for cardiovascular death ( $P = 0.01$ ) and cardiovascular death outside hospital ( $P < 0.0005$ ). Analyses of the effects over time showed that clarithromycin increased cardiovascular mortality during the first three years (HR: 1.42, 95% CI: 1.09–1.84) due to increased cardiovascular mortality outside hospital in patients not on statin (HR: 2.36, 95% CI: 1.60–3.50). During the last 4 years, cardiovascular death outside hospital was lower in the clarithromycin group (HR: 0.64, 95% CI: 0.46–0.88).

**Conclusion:** Clarithromycin increased mortality due to cardiovascular death outside hospital and cerebrovascular morbidity in patients with stable coronary heart disease who were not on statin. The increased cardiovascular mortality was years later compensated, likely through frailty attrition.

© 2015 Elsevier Ireland Ltd. All rights reserved.

## 1. Introduction

The CLARICOR trial tested the hypothesis that antibiotics active against *Chlamydomphila pneumoniae* reduce the clinical manifestations

of coronary atherosclerosis [1]. Unexpectedly, the results were that clarithromycin for 2 weeks compared with placebo in patients with stable coronary heart disease increased the all-cause mortality by 27% at 2.6 years and by 20% at 6 years after randomisation [1,2]. Our search

<sup>☆</sup> Funding: The CLARICOR trial was investigator-initiated and controlled. This work was supported by grants from non-profit funds (The Danish Heart Foundation (grant numbers 01-1-5-21-22894, 99-2-5-103-22773, 99-1-5-87-22712, and 97-2-5-70-22537); The Copenhagen Hospital Corporation (grant date 7 October 1997); The Danish Research Council (grant numbers 9702122 and 22-00-0261); The 1991 Pharmacy Foundation (grant number HPN/Id/71-97)) and The Copenhagen Hospital Corporation and the Copenhagen Trial Unit. Abbott Laboratories, IDC, Queensborough, UK supplied the clarithromycin and placebo tablets. Those financially supporting the trial had no role in design, data collection, data analyses, data interpretation, or writing the reports. The drafting and revisions were exclusively conducted by the academic authors.

<sup>☆☆</sup> Trial registration: ClinicalTrials.gov Identifier: NCT00121550.

\* Corresponding authors at: The Copenhagen Trial Unit, Centre for Clinical Intervention Research, Rigshospitalet, Copenhagen University Hospital, Blegdamsvej 9, DK-2100 Copenhagen, Denmark.

E-mail addresses: [pwinkel@ctu.dk](mailto:pwinkel@ctu.dk) (P. Winkel), [jl@ctu.dk](mailto:jl@ctu.dk) (J. Lindschou), [cgluud@ctu.dk](mailto:cgluud@ctu.dk) (C. Gluud).

<sup>1</sup> These authors take responsibility for all aspects of the reliability and freedom from bias of the data presented and their discussed interpretation.

<sup>2</sup> Investigators of the CLARICOR trial group are listed at end of article and in references 1 and 2.



for explanations of the unexpected harms revealed that cardiovascular death outside hospital was almost doubled by clarithromycin, and this effect was not detected in patients with statin treatment at entry into the trial [1–4].

The long-term effects of clarithromycin versus placebo during 10 years of follow up are presently reported.

## 2. Methods

### 2.1. Trial design and participants

The CLARICOR trial is an investigator-initiated, randomised, placebo-controlled, multicentre superiority trial including 4372 patients with stable coronary heart disease, using central 1:1 randomisation and blinding of all parties in all phases [1]. The CLARICOR trial was conducted in compliance with the Declaration of Helsinki, and national laws and regulations (ClinicalTrials.gov NCT00121550; Regional Ethics Committee KF 01-076/99 and HB 2009/015; the Danish Data Protection Agency 1999-1200-174 and 2012-41-0757; and the Danish Medicines Agency 2612-975). All patients in Copenhagen with a hospital diagnosis of myocardial infarction or angina pectoris (International Statistical Classification of Diseases (ICD) codes I20.9 to 21.9) during the years 1993 to 1999 were identified and, if alive, invited by mail in late 1999 to participate in the trial. After providing informed consent, participants were randomised to clarithromycin 500 mg (Klacid Uno®) per day versus placebo for 2 weeks during the period from October 5, 1999 to April 15, 2000. The adjudicated outcomes during the first 2.6 years and the all-cause mortality during the first 6 year follow up period have been reported [1,2].

Using Danish public registers for outcome assessment, an extended follow up from randomisation until January 1, 2010 (latest update of the National Register of Causes of Death) is now reported, thereby providing a total of 10 years ( $\pm 3$  months) of follow up. Thus, no direct contact post entry data were collected apart from a mailed adverse event form.

### 2.2. Public register based outcomes

The Danish 10 digit central person registration number is used at all contacts with the health care system. Somatic hospital contact can only be completed with a diagnosis based upon the ICD 10th revision and subsequent notification of the National Patient Register [5, 6]. Each department must issue at least an action diagnosis, describing the main reason for the admission (A diagnosis). Other important diagnoses may be recorded as B diagnoses.

Information about vital status was obtained from the Danish Central Civil Register, which, like the National Patient Register, has coverage close to 100%. Information about the underlying cause of death as well as the four putative (direct or indirect) causes of death was obtained from the National Register of Causes of Death [5].

For each recorded A diagnosis and for each underlying cause of death we classified the outcome into a prioritised list of disjoint and exhaustive categories (restrictive diagnosis classification) [7]: acute myocardial infarction (AMI) (I21.0–23.9); unstable angina pectoris (I20.0, I24.8–24.9); cerebrovascular disease (I60.0–64.9 and G45.0–46.8); peripheral vascular disease (I70.2–70.9); other cardiovascular diseases (I00.0–99.9 unless already covered); and non-cardiovascular disease (A00.0–T98.3 unless already covered). A more liberal diagnosis classification was based on all A and B codes and the four fields of ICD codes on the form submitted to the Register of Causes of Death, but otherwise based on the same list of disjoint categories [7]. The differences between the results of the two classifications proved to be minor. The Supplementary Appendix compares the restrictive results presented here with the corresponding liberal results.

The date where the outcome was diagnosed was considered the date of the outcome. The primary outcome was time to a composite of death regardless of cause, AMI, or unstable angina; the secondary outcome was time to a composite of cardiovascular death, AMI, or unstable angina; and the tertiary outcome was time to a composite of cardiovascular death, AMI, unstable angina, cerebrovascular attack, or peripheral vascular disease [1]. Cardiovascular death outside hospital was used as a proxy for sudden cardiovascular death [4].

### 2.3. Statistical methods

The distribution of time to outcome was compared between the two intervention groups using Cox regression analysis after testing for proportional hazards [8]. Significant interaction between time and a specified covariate was taken as evidence that the assumption of constancy of hazard ratio (HR) is violated. Linearity of log HR was graphically checked. All biochemical quantities were log transformed to fulfil the linearity assumption [9–12].

The hazards of the first 3 years after randomisation, the next 3 years, and the final 4 years were compared (this analysis is meaningful although intervention groups are no longer comparable at the 3 or 6 year mark). When no time trend was documented, the full 10 year course was analysed. Analyses were either adjusted for the protocol specified stratification variables (sex, previous MI, age below 60 years, and centre) [1] (stratification-adjusted analyses) or adjusted for stratification variables plus all design variables recorded at randomisation, including clinical variables, medical treatment at entry, and biochemical quantities (see Table 1 for risk factors used for adjustments) (fully adjusted analyses).

All analyses were conducted according to the intention-to-treat principle. P values at or above 5% were regarded as non-significant. As the trial is primarily dealing with harms of an intervention [1,2], it was decided *a priori* not to adjust our statistical threshold for multiple testing.

All analyses were made using the statistical software SAS 9.3, SPSS 17.1, and STATA13.

## 3. Results

### 3.1. 10 year follow up

The CONSORT flowchart is shown in the Supplementary Appendix (S Fig. 1). Table 1 shows the clinical and biochemical entry characteristics.

Table 2 shows the 10 year stratification-adjusted analysis for the composite outcomes and for each single outcome component. For cardiovascular mortality the assumption of proportional hazards was significantly violated ( $P < 0.01$ ).

Clarithromycin tended to increase all-cause mortality in all participants over the 10 years, an effect that was significant in patients not on statin treatment at entry (HR: 1.16, 95% confidence interval (CI) 1.04–1.31,  $P = 0.010$ ) but not in those on statin at entry (HR: 0.98, 95% CI: 0.83–1.17,  $P = 0.861$ ) (Fig. 1). Clarithromycin increased the HR of cerebrovascular disease (HR: 1.19, 95% CI: 1.02–1.38,  $P = 0.025$ ), an effect that stayed significant in patients not on statin treatment at entry (HR: 1.25, 95% CI: 1.03–1.50,  $P = 0.021$ ) but not in those on statin at entry (HR: 1.10, 95% CI: 0.84–1.45,  $P = 0.46$ ). Otherwise clarithromycin did not significantly affect any of the outcomes during the 10 year period. Fully adjusted analyses gave similar results (S Table 5).

### 3.2. Analyses of the effects of clarithromycin over time

Table 3 examines the time course by contrasting the first 3 years after randomisation with the next 3 year period and the final approximately 4 year period for the main types of mortality. Clarithromycin increased all-cause mortality during the first 3 years after randomisation in stratification-adjusted and fully adjusted analyses (Table 3). Thereafter, the effect of clarithromycin on all-cause mortality diminished. Clarithromycin increased cardiovascular mortality during the first 3 years after randomisation in stratification-adjusted analysis, but the significance vanished in the fully adjusted analysis (which, amongst other things, takes statin treatment at randomisation into consideration). Thereafter, no significant effect of clarithromycin on cardiovascular mortality emerged. There was no demonstrable effect of clarithromycin on cardiovascular mortality at hospital during any of the periods. Clarithromycin did not affect non-cardiovascular mortality.

Clarithromycin increased cardiovascular death outside hospital during the first 3 year period in the stratification-adjusted and fully adjusted analyses. During the last 4 years of follow up, this effect was reversed with significantly fewer participants dying a cardiovascular death outside hospital in the clarithromycin group in the stratification-adjusted and fully adjusted analyses (Table 3).

During the first 3 years (but not during the next two periods) there was a significant interaction between use of statin and the experimental intervention ( $P = 0.004$ ). Clarithromycin increased the HR to 2.36 for cardiovascular death outside hospital in participants not on statin at entry (95% CI: 1.60–3.50,  $P < 0.0005$ ). This was not the case in the participants on statin at entry (HR: 0.75, 95% CI: 0.38–1.47,  $P = 0.40$ ).

Table 4 completes the temporal analysis of such deaths. Whilst patients on statin treatment showed no discernible clarithromycin effects, those not on statin showed a clear time-dependent effect of clarithromycin: the clarithromycin group exhibited a significantly increased risk during the first 3 years as compared with the placebo group; a correspondingly lower proportion died during the final period; cf. the absolute numbers of deaths in the table.

**Table 1**

Entry characteristics of participants randomised to clarithromycin versus placebo in the CLARICOR trial.

Entry variables		Clarithromycin (n = 2172)	Placebo (n = 2200)
Age in years	Mean (SD)	65.4 (10.3)	65.2 (10.4)
Males	n (%)	1514 (69.7)	1519 (69.1)
Previous myocardial infarction	n (%)	1470 (67.7)	1494 (67.9)
Diabetes	n (%)	341 (15.7)	337 (15.3) <sup>a</sup>
Hypertension	n (%)	878 (40.4)	883 (40.2) <sup>a</sup>
Smoking status			
Smoker	n (%)	891 (37.7)	753 (34.2)
Ex-smoker	n (%)	981 (45.2)	1012 (46.0)
Never smoked	n (%)	372 (17.1)	435 (19.8)
Drugs			
Aspirin	n (%)	1902 (87.6)	1937 (88.0)
Statin	n (%)	896 (41.3)	904 (41.1)
Calcium antagonist	n (%)	755 (34.8)	772 (35.1)
β-blocker	n (%)	653 (30.1)	661 (31.0)
ACE inhibitor	n (%)	604 (27.8)	577 (26.29)
Long acting nitrate	n (%)	453 (20.9)	457 (20.8)
Digoxin	n (%)	154 (7.1)	126 (5.7)
Antiarrhythmic	n (%)	55 (2.5)	51 (2.3)
Diuretic	n (%)	773 (35.6)	762 (34.6)
Biochemical quantities in plasma <sup>b</sup>			
High sensitivity C-reactive protein, mg/L	Mean (median) min–max N	5.85 (2.84) 0.03–96.9 2128	5.29 (2.76) 0.10–87.8 2159
N-terminal-pro-B-type natriuretic peptide, ng/L	Mean (median) min–max N	509 (212) 4.4–19,303 2123	476 (195) 8.5–31,040 2149
High sensitivity cardiac TnT, ng/L	Mean (median) min–max N	10.4 (7.0) 3–397 2086	11.5 (7.0) 3–1966 2111
YKL40, µg/L	Mean (median) min–max N	151 (111) 18–3047 2135	149 (109) 15–2808 2163
Pregnancy associated plasma protein A, n ≥ 4 mIU/L	n (%) N	261 (12.4) 2102	288 (13.5) 2141

<sup>a</sup> Missing data for one placebo participant.<sup>b</sup> Missing data mainly due to storage and thawing problems of serum samples for at least one biochemical quantity in 91 (4.2%) clarithromycin participants and in 91 (4.1%) placebo participants.

## 4. Discussion

In this trial, using data from public registers for follow up, we confirmed the effects of 2 weeks of clarithromycin versus placebo on the increased all-cause mortality, cardiovascular deaths, and cardiovascular death outside hospital in patients with stable coronary heart disease during the first 2.6 years of follow-up. When using public register data for follow up over a full 10 year period, we found that the effect persisted [1–4, 7]. However, analyses of the effects of clarithromycin over time showed that after the 3rd year, the differences vanished, and during the final 4 years, the effect on cardiovascular death outside hospital was reversed. Here, the placebo-treated participants seemed to catch up with those on clarithromycin. An obvious interpretation is frailty attrition, i.e., sudden cardiac death occurs ‘prematurely’ in a subset vulnerable to the antibiotic, so after some time survivors are on the whole more resistant. The entire reversal turned out to affect a subgroup of patients, viz. patients without statin treatment at randomisation. An alternative interpretation is that more frequent, accelerated, cardiovascular symptoms during the first periods lead to more coronary revascularisations or more attentive medication, both of which could explain the improved cardiovascular survival during the final 4 years.

As a further new observation, clarithromycin increased the risk of cerebrovascular diseases by about 20% versus placebo during the 10 year period in the stratification adjusted analysis. This observation rests on more than 600 outcomes [13] and the findings were robust to whether a restrictive or liberal diagnosis classification was used. Furthermore, the harmful effect was again only observed in patients not on statin at entry.

### 4.1. Comparison with other studies

The present findings extend our previous results of the CLARICOR trial as well as our meta-analysis of 17 randomised trials assessing the effect of antibiotics for patients with coronary heart disease, as we observed that clarithromycin was associated with increased cerebrovascular disease during the 10 year follow up [1–4].

Our findings during the first couple of years following the 2 week intervention seem in concert with results from previous antibiotic randomised clinical trials [2] as well as most observational evidence assessing clarithromycin [14,15]. Other observational evidence has shown cardiovascular adverse events following erythromycin [16] and azithromycin [17]. A Danish register based observational study concluded that there was no detrimental effect of clarithromycin [18]. Their patient inclusion criteria, treatment duration, and methodology differed from other observational studies and from our evidence, arising (as it is) from a randomised trial.

We do not know the exact mechanism leading to the clarithromycin induced premature sudden cardiovascular deaths. There is no indication that the presence of antibodies against *C. pneumoniae* influences the detrimental effect of clarithromycin. Clarithromycin is concentrated in macrophages, and macrolide antibiotics stimulate the growth of macrophages, which could lead to unstable plaques followed by thrombosis and embolism [19–21]. Sudden cardiac death comprises 33–50% of deaths in patients with chronic ischemic heart disease [22,23]. Such deaths are primarily considered to follow rupture of vulnerable atherosclerotic plaques in the coronary arteries [24,25], but other mechanisms like arrhythmia or coronary spasms may also be involved. Effects on

**Table 2**  
Hazard ratio (HR) and 95% confidence interval (CI) of clarithromycin versus placebo for participants with stable coronary heart disease in the CLARICOR trial according to outcomes. Clarithromycin group, n = 2172. Placebo group n = 2200.

Outcomes (restrictive diagnosis classification (see <a href="#">Methods</a> ))	HR	95% CI	Stratification-adjusted P (Fully adjusted P) <sup>a</sup>	Number of outcomes
Primary outcome (all-cause mortality, AMI <sup>b</sup> , or UAP <sup>c</sup> )	1.06	0.98–1.14	0.17 (0.52)	C <sup>d</sup> : 1238 Pl <sup>e</sup> : 1214
Secondary outcome (cardiovascular mortality, AMI, or UAP)	1.05	0.95–1.15	0.35 (0.80)	C: 905 Pl: 897
Tertiary outcome (cardiovascular mortality, AMI, UAP, cerebrovascular disease, or peripheral vascular disease)	1.05	0.96–1.14	0.28 (0.65)	C: 1116 Pl: 1108
All-cause mortality	1.10	1.00–1.21	0.054 (0.16)	C: 866 Pl: 815
Non-cardiovascular mortality	1.07	0.94–1.23	0.30 (0.41)	C: 442 Pl: 426
Cardiovascular mortality	Period dependent <sup>f</sup>	Period dependent	Period dependent	C: 424 Pl: 389
AMI or UAP	1.02	0.92–1.13	0.71 (0.87)	C: 690 Pl: 700
AMI	0.99	0.88–1.13	0.93 (0.42)	C: 468 Pl: 488
UAP	1.03	0.90–1.19	0.66 (0.63)	C: 397 Pl: 399
Cerebrovascular disease	1.19	1.02–1.38	0.025 (0.074)	C: 364 Pl: 321
Peripheral vascular disease	1.00	0.79–1.26	0.99 (0.47)	C: 143 Pl: 148

<sup>a</sup> Value in parenthesis is P value of corresponding adjusted analysis (see [Table 1](#) for adjustment factors, i.e., all entry variables).

<sup>b</sup> AMI: acute myocardial infarction.

<sup>c</sup> UAP: unstable angina pectoris.

<sup>d</sup> C: clarithromycin group.

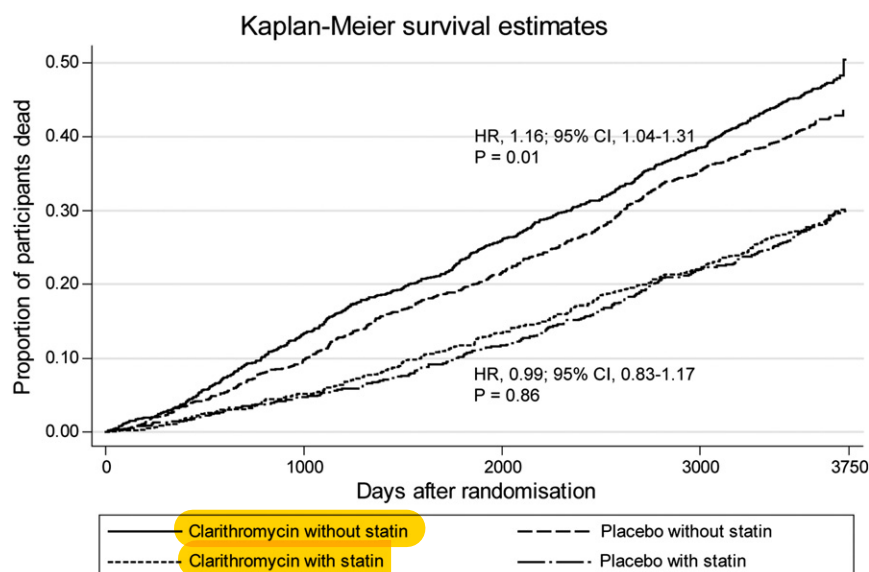
<sup>e</sup> Pl: placebo group.

<sup>f</sup> Proportional hazards assumption not fulfilled (see [S Table 3](#)).

myocardial repolarisation causing QT prolongation suggesting potassium channel inhibition are usually short-term events occurring while on macrolides [26,27]. We observed no major effects of clarithromycin on all-cause mortality during the first months following the 2 weeks of clarithromycin administration [1,2], but we observed an increase in out-of-hospital cardiovascular mortality soon after the intervention period [4], extending observational evidence [14,16,17].

#### 4.2. Strengths of the trial

The trial's strengths are the size of the participant population, the strictly concealed central allocation, the few losses to follow up (26/4373 [0.6%] during 10 years), and the blinding of all parties. Risk factors at the start of the trial were comparable in the two intervention groups [1,2,4,9–12]. This was confirmed in the present analyses, which include



**Fig. 1.** Kaplan Meier cumulative event curves for all-cause mortality in participants randomised to clarithromycin versus placebo stratified according to statin or no statin treatment at entry into the CLARICOR trial. 2571 participants were without statin treatment at entry (clarithromycin n = 1276; placebo n = 1295) and 1800 participants were with statin treatment at entry (clarithromycin n = 896; placebo n = 904). Apart from 26 participants lost to follow up, there is no censoring until day 3560. HR: hazard ratio. CI: confidence interval.

**Table 3**

All cause mortality and cardiovascular mortality during three follow up periods. Hazard ratio (HR) with 95% confidence interval (CI) of clarithromycin versus placebo. Clarithromycin group n = 2172. Placebo group n = 2200.

Outcomes (restrictive diagnosis classification (see Methods))	HR during 0–3 years <sup>a</sup>			HR during 3–6 years			HR during the 6–10 years		
	HR (95% CI)	Stratification-adjusted P (Fully adjusted P) <sup>b</sup>	Deaths	HR (95% CI)	Stratification-adjusted P (Fully adjusted P) <sup>b</sup>	Deaths	HR (95% CI)	Stratification-adjusted P (Fully adjusted P) <sup>b</sup>	Deaths
All-cause mortality	1.26 (1.04–1.53)	0.017 (0.04)	C: 237 Pl: 192	1.13 (0.95–1.34)	0.18 (0.12)	C: 260 Pl: 240	1.00 (0.87–1.15)	0.99 (0.31)	C: 369 Pl: 383
Non-cardiovascular mortality	1.10 (0.83–1.45)	0.52 (0.40)	C: 102 Pl: 95	0.94 (0.74–1.20)	0.94 (0.47)	C: 134 Pl: 134	1.08 (0.81–1.32)	0.43 (0.77)	C: 206 Pl: 197
Cardiovascular mortality	1.42 (1.09–1.84)	0.008 (0.053)	C: 135 <sup>c</sup> Pl: 97	1.24 (0.96–1.60)	0.11 (0.06)	C: 126 Pl: 106	0.91 (0.74–1.13)	0.39 (0.14)	C: 163 Pl: 186
Cardiovascular mortality at hospital	0.92 (0.59–1.44)	0.73 (0.51)	C: 37 Pl: 41	1.23 (0.89–1.70)	0.22 (0.20)	C: 80 Pl: 68	1.20 (0.91–1.60)	0.20 (0.31)	C: 104 Pl: 90
Cardiovascular mortality outside hospital	1.76 (1.27–2.45)	0.001 (0.006)	C: 97 Pl: 56	1.26 (0.82–1.93)	0.30 (0.14)	C: 46 Pl: 38	0.64 (0.46–0.88)	0.006 (0.002)	C: 59 Pl: 96

<sup>a</sup> Period after randomisation.

<sup>b</sup> Value in parenthesis is P value of fully adjusted analysis (see Table 1 for adjustment factors, i.e., all entry variables).

<sup>c</sup> C: clarithromycin group.

<sup>d</sup> Pl: placebo group.

<sup>e</sup> One death could not be classified.

all the serological biomarkers so far assessed [9–12]. These biomarkers all contain significant prognostic information regarding cardiovascular outcomes and mortality but none of them differed noticeably in the two intervention groups at randomisation (Table 1). There is no evidence that systematic errors could have occurred in the trial. The clarithromycin-treated patients exhibited markedly more adverse events such as gastrointestinal complaints during the two week intake of the study drug, which excludes an accidental interchange of codes [28]. The CLARICOR trial surpassed instructions provided in the EU Directive 2001/20/EC [29] and the ICH GCP guidelines [30], having public registration; adequate generation of allocation sequence; adequate allocation concealment; adequate blinding; adequate follow up; adequate reporting of all relevant outcomes; intention-to-treat analyses; and no for profit bias [31–35]. Furthermore, all our analytic results were consistent using two diagnostic classifications [7] and stratification-adjusted and fully adjusted analyses.

#### 4.3. Limitations of the trial

We post hoc used death outside hospital as a proxy for sudden cardiovascular death [4]. This may be a weakness in a research context, but we had no other means to assess this important outcome. Our present results highlight the problems raised by the use of composite outcomes [36]. We found no detrimental effects of clarithromycin on our three composite outcomes over the 10 years, in spite of the increased

occurrence of all-cause mortality, cardiovascular mortality, and cerebrovascular diseases. Moreover, the evidence showing the protective effect of statin treatment on the harmful effects of clarithromycin is observational and should be interpreted as such. However, Danish national prescription statistics show that, if a patient was on statin treatment, then he or she most likely stayed on it, and patients not on statin were not likely to get the treatment [37]. Another potential weakness is the large number of outcomes analysed and the repetitive analyses. However, we decided not to adjust for multiplicity in our protocol for this report because we are dealing with harms.

#### 4.4. Clinical implications and conclusions

The 10-year 'number needed to treat for an additional harmful outcome' was about 35 patients for all-cause mortality and about 52 patients for cardiovascular mortality outside hospital. Our findings may therefore have important public health consequences, as clarithromycin forms part of antibiotic regimens against *Helicobacter pylori* and is an often used antibiotic against a number of infections [16].

The conduct of further randomised clinical trials has been called for [14]. However, with the present evidence such randomised trials should face ethical problems. Considering the potential for harm, we would rather recommend urgent re-analyses of extended follow up of previous randomised clinical trials and observational studies in patients with and without coronary heart disease, taking statin treatment into consideration.

Supplementary data to this article can be found online at <http://dx.doi.org/10.1016/j.ijcard.2015.01.020>.

#### Conflicts of interest

None declared.

#### Acknowledgements

We thank the CLARICOR trial participants. We thank the investigators and other staff involved in the first phases of the CLARICOR trial (for full list of named please see references [1,2]). We thank our funders.

**Table 4**

Cardiovascular deaths outside hospital in the two groups (clarithromycin versus placebo) during the three follow-up periods, in participants on statin treatment at entry compared to participants without statin treatment at entry. Clarithromycin group: n = 2172. Placebo group: n = 2200.

Intervention Group	0-3 years <sup>a</sup>	3-6 years	6-10 years	Total 10 years	p <sup>b</sup>
Participants <b>on statin treatment</b> at entry					
Clarithromycin, n (%)	15 (42.9)	15 (65.2)	24 (38.7)	54 (45.0)	0.088
Placebo, n (%)	20 (57.1)	8 (34.8)	38 (61.3)	66 (55.0)	
Participants <b>not on statin treatment</b> at entry					
Clarithromycin, n (%)	82 (69.5)	31 (50.8)	35 (37.6)	148 (54.4)	<0.0005
Placebo, n (%)	36 (30.5)	30 (49.2)	58 (62.4)	124 (45.6)	

<sup>a</sup> Period after randomisation.

<sup>b</sup> Chi<sup>2</sup> test of independence between intervention group and period.



## Appendix A

**Contributors:** HJK had the original idea for the CLARICOR trial. JFH, JK, EK, GBJ and CG in collaboration with the CLARICOR Trial Group investigators (listed in references [1,2]) conducted the trial. PW, JH, JFH, JK, HJK, EK, GBJ and CG conceived and designed the study. PW, JH, JFH, JK, HJK, EK, GBJ, MS, JL and CG acquired the data. PW, JH, MS, JL and CG conducted the statistical analyses. PW, JH, JFH, JK, HJK, EK, GBJ, MS, JL and CG analysed and interpreted the data. PW, JH, JFH, JK, HJK, EK, GBJ, MS, JL and CG drafted the manuscript and critically revised the manuscript for important intellectual content. CG obtained funding. PW, JH, MS, JL and CG provided administrative, technical, or material support. PW and JH had access to all of the data in the study and take responsibility for the data analysis. CG is the guarantor.

**Ethical approval:** This trial was approved by the Regional Ethics Committee of the capital region; the Danish Data Protection Agency and the Danish Medicines Agency.

**Data sharing:** All de-identified data may be obtained from the Copenhagen Trial Unit.

**Transparency:** All authors had full access to all of the data in the trial and can take responsibility for the integrity of the data and the accuracy of the data analysis. The guarantor affirms that the manuscript is an honest, accurate, and transparent account of the study being reported; that no important aspects of the study have been omitted; and that any discrepancies from the study as planned have been explained.

## References

- [1] C.M. Jespersen, B. Als-Nielsen, M. Damgaard, J.F. Hansen, S. Hansen, O.H. Helø, P. Hildebrandt, J. Hilden, G.B. Jensen, J. Kastrup, H.J. Kolmos, E. Kjølner, I. Lind, H. Nielsen, L. Petersen, C. Gluud, CLARICOR Trial Group, Randomised placebo controlled multicentre trial to assess short term clarithromycin for patients with stable coronary heart disease: CLARICOR trial, *BMJ* 332 (7532) (2006) 22–27.
- [2] C. Gluud, B. Als-Nielsen, M. Damgaard, J. Fischer Hansen, S. Hansen, O.H. Helø, P. Hildebrandt, J. Hilden, G.B. Jensen, J. Kastrup, H.J. Kolmos, E. Kjølner, I. Lind, H. Nielsen, L. Petersen, C.M. Jespersen, CLARICOR Trial Group, Clarithromycin for 2 weeks for stable coronary heart disease: 6-year follow-up of the CLARICOR randomised trial and updated meta-analysis of antibiotics for coronary heart disease, *Cardiology* 111 (4) (2008) 280–287.
- [3] G.B. Jensen, J. Hilden, B. Als-Nielsen, M. Damgaard, J.F. Hansen, S. Hansen, O.H. Helø, P. Hildebrandt, J. Kastrup, H.J. Kolmos, E. Kjølner, I. Lind, H. Nielsen, L. Petersen, C.M. Jespersen, C. Gluud, CLARICOR Trial Group, Statin treatment prevents increased cardiovascular and all-cause mortality associated with clarithromycin in patients with stable coronary heart disease, *J. Cardiovasc. Pharmacol.* 55 (2) (2010) 123–128.
- [4] P. Winkel, J. Hilden, J. Fischer Hansen, P. Hildebrandt, J. Kastrup, H.J. Kolmos, E. Kjølner, C.M. Jespersen, C. Gluud, G.B. Jensen, CLARICOR Trial Group, Excess sudden cardiac deaths after short-term clarithromycin administration in the CLARICOR trial: why is this so, and why are statins protective? *Cardiology* 118 (1) (2011) 63–67.
- [5] E. Kjølner, J. Hilden, P. Winkel, N.J. Frandsen, S. Galatius, G. Jensen, J. Kastrup, J.F. Hansen, H.J. Kolmos, C.M. Jespersen, P. Hildebrandt, C. Gluud, CLARICOR Trial Group, Good interobserver agreement was attainable on outcome adjudication in patients with stable coronary heart disease, *J. Clin. Epidemiol.* 65 (4) (2012) 444–453.
- [6] World Health Organisation. International statistical classification of diseases and related health problems. Geneva: WHO (2012), 1993.
- [7] E. Kjølner, J. Hilden, P. Winkel, S. Galatius, N.J. Frandsen, G.B. Jensen, J. Fischer Hansen, J. Kastrup, C.M. Jespersen, P. Hildebrandt, H.J. Kolmos, C. Gluud, Agreement between public register and adjudication committee outcome in a cardiovascular randomized clinical trial, *Am. Heart J.* 168 (2) (2014) 197–204 e4.
- [8] P.D. Allison, *Survival Analysis Using SAS, a Practical Guide*, SAS Institute Inc., Cary, NC, 1995.
- [9] M.J. Harutyunyan, A.B. Mathiasen, P. Winkel, J.P. Gøtze, J.F. Hansen, P. Hildebrandt, G.B. Jensen, J. Hilden, C.M. Jespersen, E. Kjølner, H.J. Kolmos, C. Gluud, J. Kastrup, CLARICOR Trial Group, High-sensitivity C-reactive protein and N-terminal pro-B-type natriuretic peptide in patients with stable coronary artery disease: a prognostic study within the CLARICOR trial, *Scand. J. Clin. Lab. Invest.* 71 (1) (2011) 52–62.
- [10] K.K. Iversen, B. Teisner, P. Winkel, C. Gluud, E. Kjølner, H.J. Kolmos, P.R. Hildebrandt, J. Hilden, J. Kastrup, CLARICOR Trial Group, Pregnancy associated plasma protein-A as a marker for myocardial infarction and death in patients with stable coronary artery disease: a prognostic study within the CLARICOR Trial, *Atherosclerosis* 214 (1) (2011) 203–208.
- [11] J. Kastrup, J.S. Johansen, P. Winkel, J.F. Hansen, P. Hildebrandt, G.B. Jensen, C.M. Jespersen, E. Kjølner, H.J. Kolmos, I. Lind, H. Nielsen, C. Gluud, CLARICOR Trial Group, High serum YKL-40 concentration is associated with cardiovascular and all-cause mortality in patients with stable coronary artery disease, *Eur. Heart J.* 30 (9) (2009) 1066–1072.
- [12] S. Lyngbaek, P. Winkel, J.P. Gotze, J. Kastrup, C. Gluud, H.J. Kolmos, E. Kjølner, G.B. Jensen, J.F. Hansen, P. Hildebrandt, J. Hilden, CLARICOR Trial Group, Risk stratification in stable coronary artery disease is possible at cardiac troponin levels below conventional detection and is improved by use of N-terminal pro-B-type natriuretic peptide, *Eur. J. Prev. Cardiol.* 21 (10) (2014) 1275–1284.
- [13] K. Thorlund, G. Imberger, M. Walsh, R. Chu, C. Gluud, J. Wetterslev, G. Guyatt, P.J. Devereaux, L. Thabane, The number of patients and events required to limit the risk of overestimation of intervention effects in meta-analysis—a simulation study, *PLoS One* 6 (10) (2011) e25491.
- [14] S. Schembri, P.A. Williamson, P.M. Short, A. Singanayagam, A. Akram, J. Taylor, A.T. Hill, J.D. Chalmers, Cardiovascular events after clarithromycin use in lower respiratory tract infections: analysis of two prospective cohort studies, *BMJ* 346 (2013) f1235.
- [15] H. Svanström, B. Pasternak, A. Hviid, Use of clarithromycin and roxithromycin and risk of cardiac death: cohort study, *BMJ* 349 (2014) g4930.
- [16] W.A. Ray, K.T. Murray, S. Meredith, S.S. Narasimulu, K. Hall, C.M. Stein, Oral erythromycin and the risk of sudden death from cardiac causes, *N. Engl. J. Med.* 351 (11) (2004) 1089–1096.
- [17] W.A. Ray, K.T. Murray, K. Hall, P.G. Arbogast, C.M. Stein, Azithromycin and the risk of cardiovascular death, *N. Engl. J. Med.* 366 (20) (2012) 1881–1890.
- [18] S.S. Andersen, M.L. Hansen, M.L. Norgaard, F. Folke, E.L. Fosbol, S.Z. Abildstrom, J. Raunso, M. Madsen, L. Køber, G.H. Gislason, C. Torp-Pedersen, Clarithromycin use and risk of death in patients with ischemic heart disease, *Cardiology* 116 (2) (2010) 89–97.
- [19] E. Kita, M. Sawaki, K. Mikasa, D. Oku, K. Hamada, K. Maeda, N. Narita, S. Kashiba, Proliferation of erythromycin-stimulated mouse peritoneal macrophages in the absence of exogenous growth factors, *Nat. Immun.* 12 (6) (1993) 326–338.
- [20] C.S. Robbins, I. Hilgendorf, G.F. Weber, I. Theurl, Y. Iwamoto, J.L. Figueiredo, R. Gorbato, G.K. Sukhova, L.M. Gerhardt, D. Smyth, C.C. Zavitz, E.A. Shikatani, M. Parsons, N. van Rooijen, H.Y. Lin, M. Husain, P. Libby, M. Nahrendorf, R. Weissleder, F.K. Swirski, Local proliferation dominates lesional macrophage accumulation in atherosclerosis, *Nat. Med.* 19 (9) (2013) 1166–1172.
- [21] K. Togami, S. Chono, K. Morimoto, Subcellular distribution of azithromycin and clarithromycin in rat alveolar macrophages (NR8383) in vitro, *Biol. Pharm. Bull.* 36 (9) (2013) 1494–1499.
- [22] S.Z. Abildstrom, C. Torp-Pedersen, L. Køber, Arrhythmic and sudden death in chronic ischemic heart disease—a review of epidemiological data, *Card. Electrophysiol. Rev.* 6 (1–2) (2002) 5–8.
- [23] D.P. Zipes, A.J. Camm, M. Borggrefe, A.E. Buxton, B. Chaitman, M. Fromer, G. Gregoratos, G. Klein, A.J. Moss, R.J. Myerburg, S.G. Priori, M.A. Quinones, D.M. Roden, M.J. Silka, C. Tracy, J.J. Blanc, A. Budaj, V. Dean, J.W. Deckers, C. Despres, K. Dickstein, J. Lekakis, K. McGregor, M. Metra, J. Morais, A. Osterspey, J.L. Tamargo, J.L. Zamorano, S.C. Smith Jr., A.K. Jacobs, C.D. Adams, E.M. Antman, J.L. Anderson, S.A. Hunt, J.L. Halperin, R. Nishimura, J.P. Ornato, R.L. Page, B. Riegel, ACC/AHA/ESC 2006 guidelines for management of patients with ventricular arrhythmias and the prevention of sudden cardiac death—executive summary, *Eur. Heart J.* 27 (17) (2006) 2099–2140.
- [24] M. Naghavi, P. Libby, E. Falk, S.W. Casscells, S. Litovsky, J. Rumberger, J.J. Badimon, C. Stefanadis, P. Moreno, G. Pasterkamp, Z. Fayad, P.H. Stone, S. Waxman, P. Raggi, M. Madjid, A. Zarabi, A. Burke, C. Yuan, P.J. Fitzgerald, D.S. Siscovick, C.L. de Korte, M. Aikawa, K.E. Airaksinen, G. Assmann, C.R. Becker, J.H. Chesebro, A. Farb, Z.S. Galis, C. Jackson, I.K. Jang, W. Koenig, R.A. Lodder, K. March, J. Demirovic, M. Navab, S.G. Priori, M.D. Reikhter, R. Bahr, S.M. Grundy, R. Mehran, A. Colombo, E. Boerwinkle, C. Ballantyne, W. Insull Jr., R.S. Schwartz, R. Vogel, P.W. Serruys, G.K. Hansson, D.P. Faxon, S. Kaul, H. Drexler, P. Greenland, J.E. Muller, R. Virmani, P.M. Ridker, D.P. Zipes, P.K. Shah, J.T. Willerson, From vulnerable plaque to vulnerable patient: a call for new definitions and risk assessment strategies: part II, *Circulation* 108 (15) (2003) 1772–1778.
- [25] M. Naghavi, P. Libby, E. Falk, S.W. Casscells, S. Litovsky, J. Rumberger, J.J. Badimon, C. Stefanadis, P. Moreno, G. Pasterkamp, Z. Fayad, P.H. Stone, S. Waxman, P. Raggi, M. Madjid, A. Zarabi, A. Burke, C. Yuan, P.J. Fitzgerald, D.S. Siscovick, C.L. de Korte, M. Aikawa, K.E. Juhani Airaksinen, G. Assmann, C.R. Becker, J.H. Chesebro, A. Farb, Z.S. Galis, C. Jackson, I.K. Jang, W. Koenig, R.A. Lodder, K. March, J. Demirovic, M. Navab, S.G. Priori, M.D. Reikhter, R. Bahr, S.M. Grundy, R. Mehran, A. Colombo, E. Boerwinkle, C. Ballantyne, W. Insull Jr., R.S. Schwartz, R. Vogel, P.W. Serruys, G.K. Hansson, D.P. Faxon, S. Kaul, H. Drexler, P. Greenland, J.E. Muller, R. Virmani, P.M. Ridker, D.P. Zipes, P.K. Shah, J.T. Willerson, From vulnerable plaque to vulnerable patient: a call for new definitions and risk assessment strategies: part I, *Circulation* 108 (14) (2003) 1664–1672.
- [26] P. Libby, M. Aikawa, Mechanisms of plaque stabilization with statins, *Am. J. Cardiol.* 91 (4A) (2003) 4B–8B.
- [27] A. Link, T. Ayadhi, M. Bohm, G. Nickenig, Rapid immunomodulation by rosuvastatin in patients with acute coronary syndrome, *Eur. Heart J.* 27 (24) (2006) 2945–2955.
- [28] C.M. Jespersen, H.J. Kolmos, N. Frydendall, J. Hilden, C. Gluud, J.F. Hansen, CLARICOR Trial Group, Compliance with and short-term adverse events from clarithromycin versus placebo in patients with stable coronary heart disease: the CLARICOR trial, *J. Antimicrob. Chemother.* 64 (2) (2009) 411–415.
- [29] Directive 2001/20/EC of the European Parliament and of the Council of 4 April on the approximation of the laws, regulations and administrative provisions of the Member states relating to the implementation of good clinical practice in the conduct of clinical trials on medicinal products for human use, *Off. J. L* 121 (2001) 34–44.
- [30] International Conference on Harmonisation, Guideline for good clinical practice E6 (R1), [http://www.ich.org/fileadmin/Public\\_Web\\_Site/ICH\\_Products/Guidelines/Efficacy/E6/E6\\_R1\\_Guideline.pdf](http://www.ich.org/fileadmin/Public_Web_Site/ICH_Products/Guidelines/Efficacy/E6/E6_R1_Guideline.pdf).

- [31] K. Krljeza-Jeric, A.W. Chan, K. Dickersin, I. Sim, J. Grimshaw, C. Gluud, Principles for international registration of protocol information and results from human trials of health related interventions: Ottawa statement (part 1), *BMJ* 330 (7497) (2005) 956–958.
- [32] A. Lundh, S. Sismondo, J. Lexchin, O.A. Busuioac, L. Bero, Industry sponsorship and research outcome, *Cochrane Database Syst. Rev.* 12 (2012) MR000033.
- [33] J. Savovic, H.E. Jones, D.G. Altman, R.J. Harris, P. Juni, J. Pildal, B. Als-Nielsen, E.M. Balk, C. Gluud, L.L. Gluud, J.P. Ioannidis, K.F. Schulz, R. Beynon, N.J. Welton, L. Wood, D. Moher, J.J. Deeks, J.A. Sterne, Influence of reported study design characteristics on intervention effect estimates from randomized, controlled trials, *Ann. Intern. Med.* 157 (6) (2012) 429–438.
- [34] L. Wood, M. Egger, L.L. Gluud, K.F. Schulz, P. Juni, D.G. Altman, C. Gluud, R.M. Martin, A.J. Wood, J.A. Sterne, Empirical evidence of bias in treatment effect estimates in controlled trials with different interventions and outcomes: meta-epidemiological study, *BMJ* 336 (7644) (2008) 601–605.
- [35] J.P.T. Higgins, S. Green (Eds.), *The Cochrane Handbook for Systematic Reviews of Interventions*: The Cochrane Collaboration, 2011 ([www.cochrane-handbook.org](http://www.cochrane-handbook.org)).
- [36] N. Freemantle, M. Calvert, J. Wood, J. Eastaugh, C. Griffin, Composite outcomes in randomized trials: greater precision but with greater uncertainty? *JAMA* 289 (19) (2003) 2554–2559.
- [37] G.H. Gislason, J.N. Rasmussen, S.Z. Abildstrøm, N. Gadsboll, P. Buch, J. Friberg, S. Rasmussen, L. Køber, S. Stender, M. Madsen, C. Torp-Pedersen, Long-term compliance with beta-blockers, angiotensin-converting enzyme inhibitors, and statins after acute myocardial infarction, *Eur. Heart J.* 27 (10) (2006) 1153–1158.

# Clarithromycin (Biaxin): Drug Safety Communication - Potential Increased Risk of Heart Problems or Death in Patients With Heart Disease

[Posted 02/22/2018]

**AUDIENCE:** Health Professional, Internal Medicine, Cardiology, Patient

**ISSUE:** FDA is advising caution before prescribing the antibiotic clarithromycin (Biaxin) to patients with heart disease because of a potential increased risk of heart problems or death that can occur years later. FDA's recommendation is based on a review of the results of a 10-year follow-up study of patients with coronary heart disease from a large clinical trial that first observed this safety issue.

The large clinical trial, called the CLARICOR trial, observed an unexpected increase in deaths among patients with coronary heart disease who received a two-week course of clarithromycin that became apparent after patients had been followed for one year or longer. There is no clear explanation for how clarithromycin would lead to more deaths than placebo. Some observational studies also found an increase in deaths or other serious heart-related problems, while others did not. All the studies had limitations in how they were designed. Of the six observational studies published to date in patients with or without coronary artery disease, two found evidence of long-term risks from clarithromycin, and four did not. Overall, results from the prospective, placebo-controlled CLARICOR trial provide the strongest evidence of the increase in risk compared to the observational study results. Based on these studies, FDA is unable to determine why the risk of death is greater for patients with heart disease.

As a result, FDA added a new warning about this increased risk of death in patients with heart disease, and advised prescribers to consider using other antibiotics in such patients. FDA also added the study results to the clarithromycin drug labels. As part of FDA's usual ongoing safety monitoring of drugs, we are continuing to monitor safety reports in patients taking clarithromycin.

**BACKGROUND:** Clarithromycin is used to treat many types of infections affecting the skin, ears, sinuses, lungs, and other parts of the body, including *Mycobacterium avium* complex (MAC) infection, a type of lung infection that often affects people with human immunodeficiency virus (HIV). Clarithromycin is not approved to treat heart disease.

**RECOMMENDATION:** *Healthcare professionals* should be aware of these significant risks and weigh the benefits and risks of clarithromycin before prescribing it to any patient, particularly in patients with heart disease and even for short periods, and consider using other available antibiotics. Advise patients with heart disease of the signs and symptoms of cardiovascular problems, regardless of the medical condition for which you are treating them with clarithromycin.

*Patients* should tell your healthcare professionals if you have heart disease, especially when you are being prescribed an antibiotic to treat an infection. Talk to them about the benefits and risks of clarithromycin and any alternative treatments. Do not stop taking your heart disease medicine or antibiotic without first talking to your healthcare professionals. Doing so could be harmful without your health care professionals' direct supervision. Seek medical attention immediately if you experience symptoms of a heart attack or stroke, such as chest pain, shortness of breath or trouble breathing, pain or weakness in one part or side of your body, or slurred speech.

Healthcare professionals and patients are encouraged to report adverse events or side effects related to the use of these products to the FDA's MedWatch Safety Information and Adverse Event Reporting Program:

- Complete and submit the report Online: [www.fda.gov/MedWatch/report](http://www.fda.gov/MedWatch/report) (<http://www.fda.gov/MedWatch/report>)
- **Download form** ([/Safety/MedWatch/HowToReport/DownloadForms/default.htm](#)) or call 1-800-332-1088 to request a reporting form, then complete and return to the address on the pre-addressed form, or submit by fax to 1-800-FDA-0178

[02/22/2018 - **Drug Safety Communication** ([/Drugs/DrugSafety/ucm597289.htm](#)) - FDA] **en Español** ([/Drugs/DrugSafety/ucm598452.htm](#))

More in **Safety Alerts for Human Medical Products**  
([/Safety/MedWatch/SafetyInformation/SafetyAlertsforHumanMedicalProducts/default.htm](#))

**2018 Safety Alerts for Human Medical Products** ([/Safety/MedWatch/SafetyInformation/SafetyAlertsforHumanMedicalProducts/ucm590808.htm](#))

**2017 Safety Alerts for Human Medical Products** ([/Safety/MedWatch/SafetyInformation/SafetyAlertsforHumanMedicalProducts/ucm535957.htm](#))