

Instructions for Use

Breezhaler® Inhaler

■ Which inhaler is prescribed for me?

- Onbrez®: indacaterol 150 mcg
- Ultibro®: indacaterol 150 mcg, glycopyrronium 50 mcg

■ What are Onbrez® and Ultibro® used for?

Onbrez® and Ultibro® are used as the regular treatment of chronic obstructive pulmonary disease (COPD). COPD is a serious, long-term lung disease that cause shortness of breath, chest tightness, and cough.

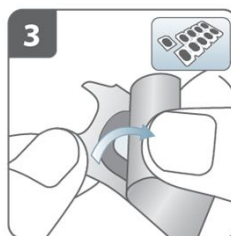
■ How to use a Breezhaler® inhaler?



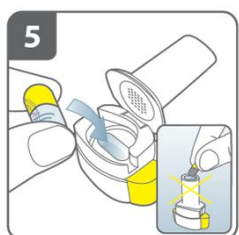
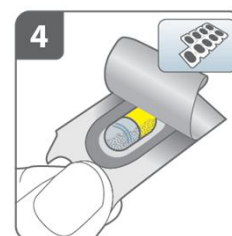
Pull off the cap.



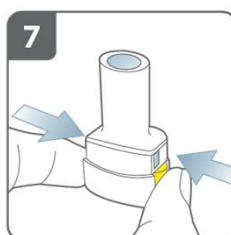
Hold the base and tilt the mouthpiece.



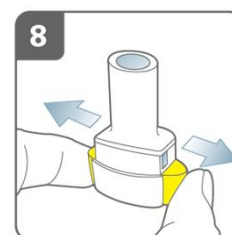
Peel away the protective backing to expose the capsule. **Do not swallow the capsule.**



Remove capsule from the blister and place the capsule into the capsule chamber. Close the Breezhaler® until you hear a “click”.



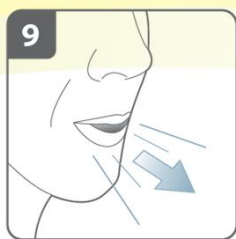
Hold the inhaler upright. Pierce capsule by firmly pressing both side buttons at the same time. You should hear a noise as the capsule is pierced. **Only pierce the capsule once.**



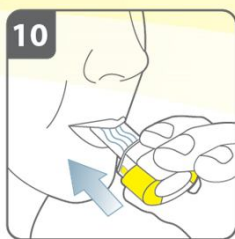
This sheet is for your information; please follow your doctor's directions



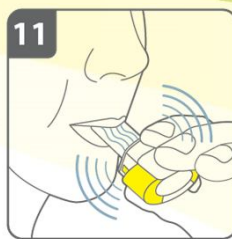
以病家為尊、以同仁為重、以北醫為榮



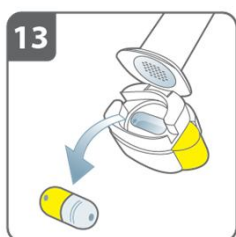
Breathe out fully away from the inhaler.



Place the mouthpiece in your mouth and form a good seal around it with your lips. Breathe in steadily and deeply. You should hear the capsule spinning in the Breezhaler® making a whirring noise.



Hold your breath for 5-10 seconds or as long as you comfortably can. Then breathe out.



Open the Breezhaler® to see if any powder is still in the capsule. If there is still powder in the capsule, repeat steps 9 to 12. If the capsule is empty, tip out the empty capsule and put in household waste and close the Breezhaler®

■ Precaution

1. Onbrez® and Ultibro® should be used every day and not only when you have breathing problems or other symptoms of COPD. It should **NOT** be used to relieve a sudden attack of breathlessness or wheezing.
2. You may clean the inhaler by wiping the mouthpiece inside and outside with a clean, dry, lint-free cloth to remove any powder residue. Keep the inhaler dry. Never wash your inhaler with water.
3. Do not use the Breezhaler® inhaler to take any other capsule medicine.

■ How should I store my Breezhaler® inhaler?

1. Store the capsules in the original blister in order to protect from moisture, and only remove it immediately before use. The inhaler in each pack should be disposed after all capsules in that pack have been used.
2. Keep your inhaler and capsules out of the sight and reach of children.

References:
Package insert

- Contact number : (02) 2737-2181 EXT. 8130
- Last updated by the Department of Pharmacy on 2021.01
- PFS-7200-9025

This sheet is for your information; please follow your doctor's directions



以病家為尊、以同仁為重、以北醫為榮