

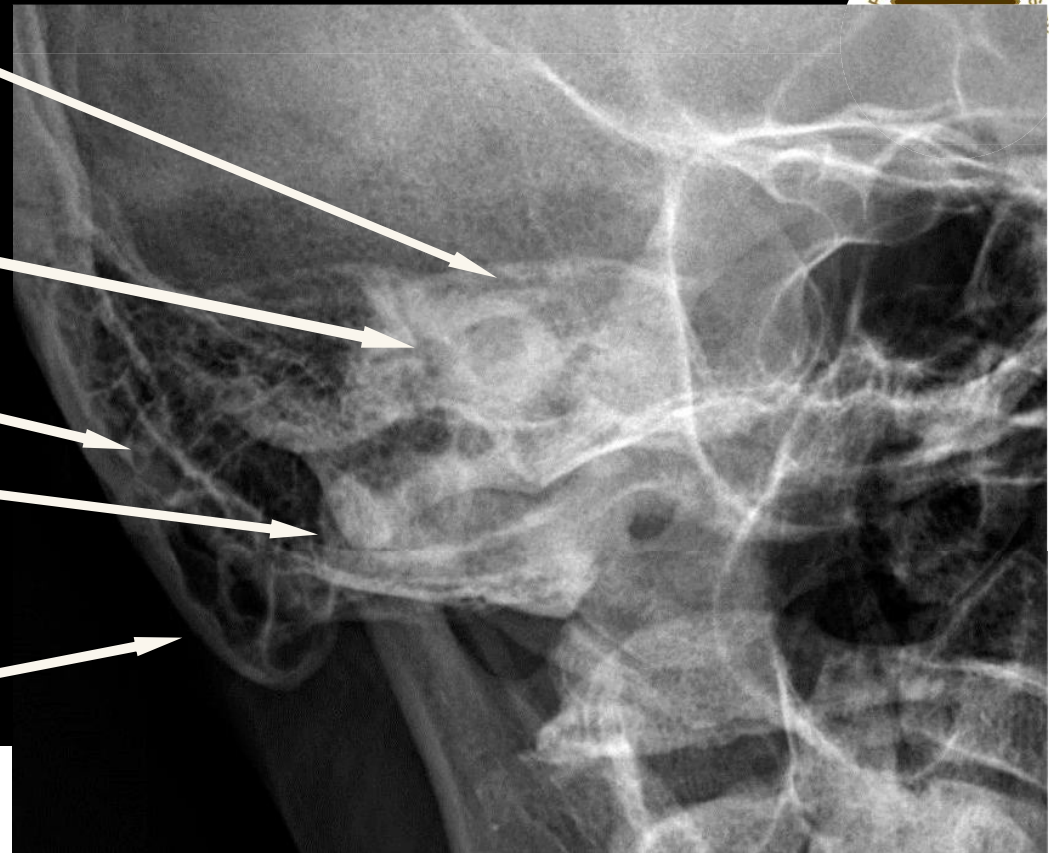
Internal acoustic canal

Semicircular canal

Mastoid air cell

Mandibular condyle

Mastoid process



- Stenvers projection taken to demonstrate internal auditory canal, as well as temporal bones, bony labyrinth and meatus.
- X-ray projections: 12 degree cephalad angulation with head rotated 45 degrees from AP
- It is used for disease which involves internal acoustic canal, such as acoustic neuroma.