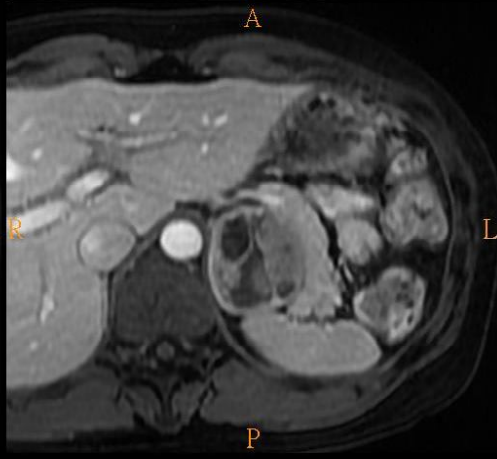
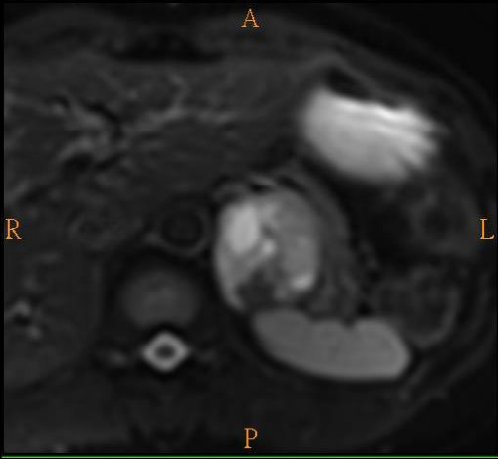
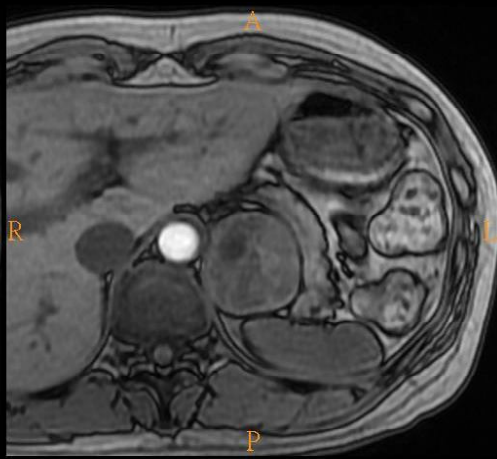
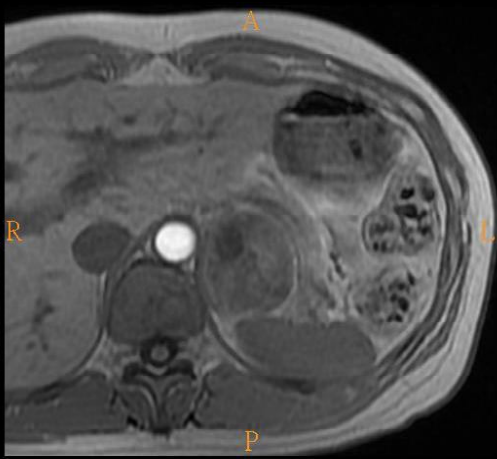


林口長庚紀念醫院影像診療科  
臺北醫學大學附設醫院影像醫學部

June 27, 2018

- 
- 38 year-old female
  - History:
    - Unstable blood pressure
  - Past history:
    - No known systemic disease before



, extra-adrenal, bilateral, malignant, children, familial, no hypertension, calcification

- 0.1~0.6% in hypertensive adults
- Paraganglioma, catecholamine-secreting tumor from chromaffin cells

#### Clinical presentation

- Uncontrolled secondary hypertension
- Paroxysmal hypertensive crises
- Cardiac dysfunction, neurological events

- Multiple endocrine neoplasia type 2 (MEN 2)
- Von-Hippel-Lindau disease
- Neurofibromatosis type 1
- Sturge-Weber syndrome
- Tuberous sclerosis

- Usually large mass
- Heterogeneous if necrosis or hemorrhagic
- Lightbulb sign (T2WI)
- No signal loss on In- and Out- phases
- Greater enhancement on arterial and venous phases