

CASE 3

8 Y GIRL

MYELOID SARCOMA

Brief history

- 8 years old girl.
- Chief complain:
 - Gradually progressing bilateral leg pain and weakness since a month ago.
- PHx: No known disease

Imaging

- 2018-02 L-spine MRI +C
- 2018-02 Brain MRI +C
- 2018-02 chest~pelvis CT +C

Imaging findings



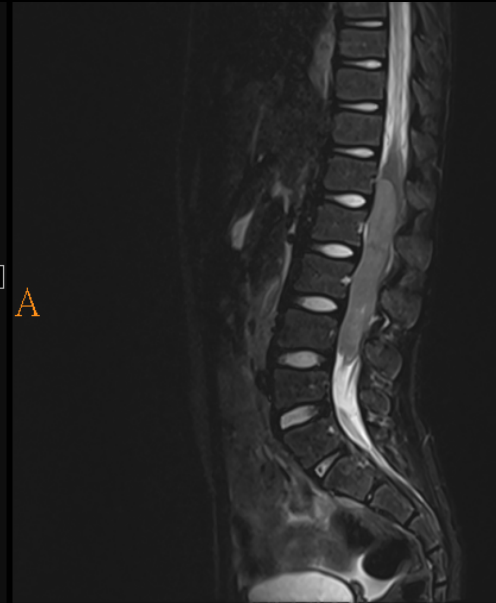
P A

F
A

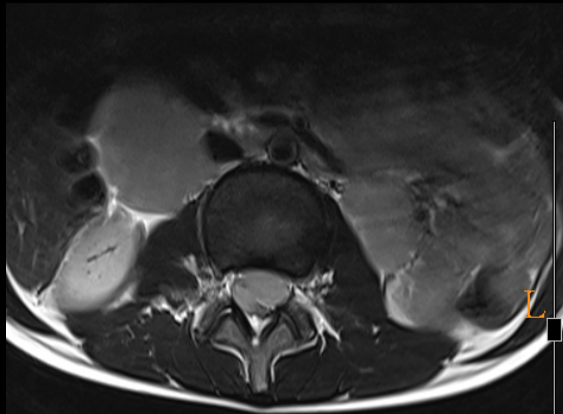


P A

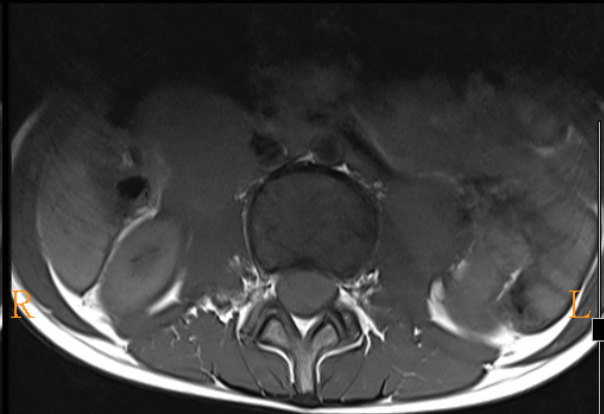
F
A



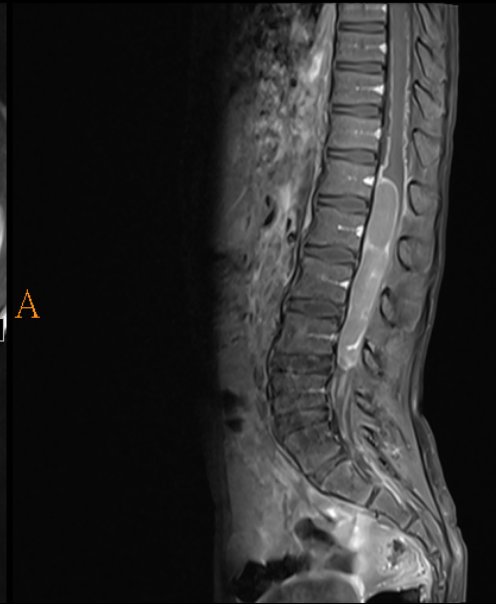
F
H



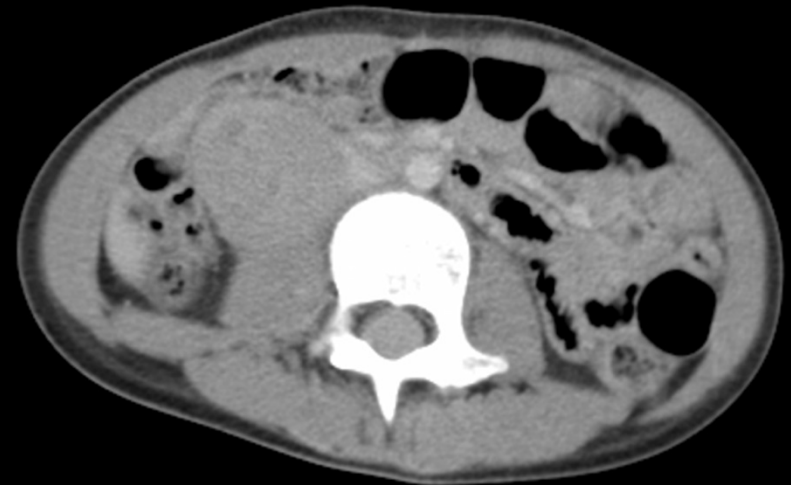
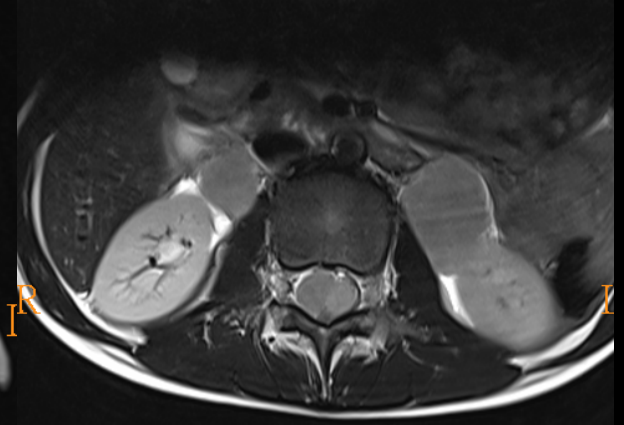
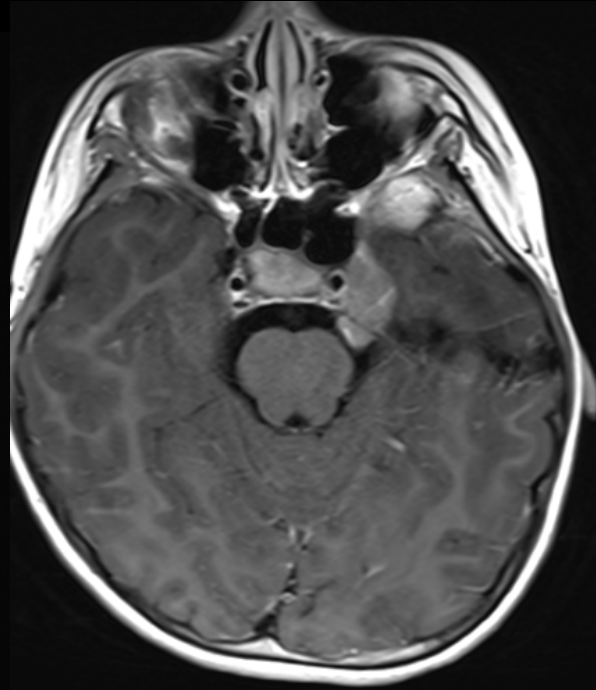
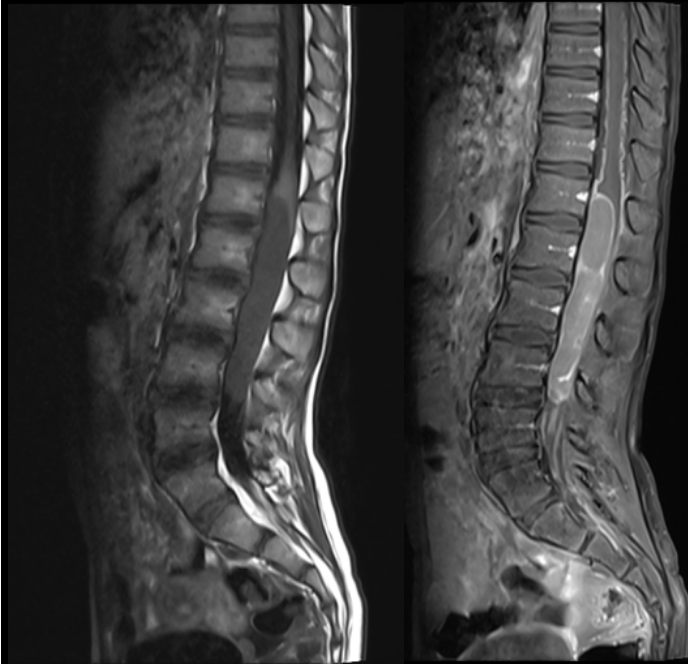
L R



L A



Imaging findings



Differential diagnosis

- Neuroblastoma?

Diagnosis

- Breast nodule biopsy 2018-03
 - Pathology: Myeloid sarcoma

Myeloid sarcoma

- An extramedullary proliferation of myeloid blasts. 3 types:
 - granulocytic sarcoma (GS) => Most common
 - Primitive monocytic sarcoma (rare)
 - tumor composed of three blood cells (white blood cells, red blood cells, and platelets) (rare)
- Solid tumor in patients with myeloproliferative disorder (AML most common).
- Synonyms: granulocytic sarcoma, chloroma
- Clinical issue:
 - Commonly associated with myeloproliferative disorder.
 - Can occur isolated (rare)
 - 60% of patients < 15 years
 - Prognosis: Poor
- Imaging features:
 - Multiple lesions at multiple sites
 - Homogeneous enhancing tumor
 - Clue: with known myeloproliferative disorder

Our patient

- CBC/DC data at presentation are normal=> isolated type
- Under chemotherapy now