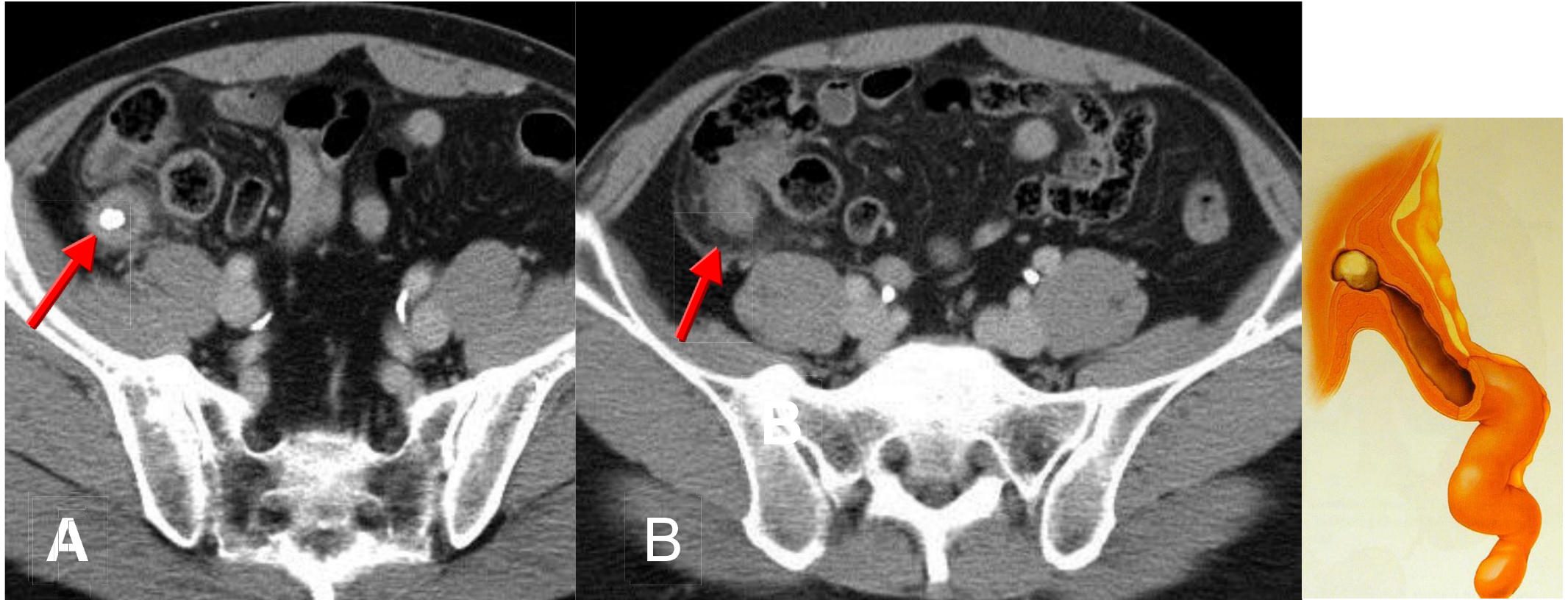


Appendicitis with fecalith



Marked swelling appendix ($>6\text{mm}$ in adult) with central calcified content due to appendicalith (arrow in A) & periappendiceal faty stranding (arrow in B) are found. CT is the most precise imaging modality for detection of appendicitis with sensitivity over 95% & similar specificity. A fecalith is identified on plain radiography with less than 5%.