

CASE 5

50 Y/O WOMAN

Brief history

- **Past history**

Nil.

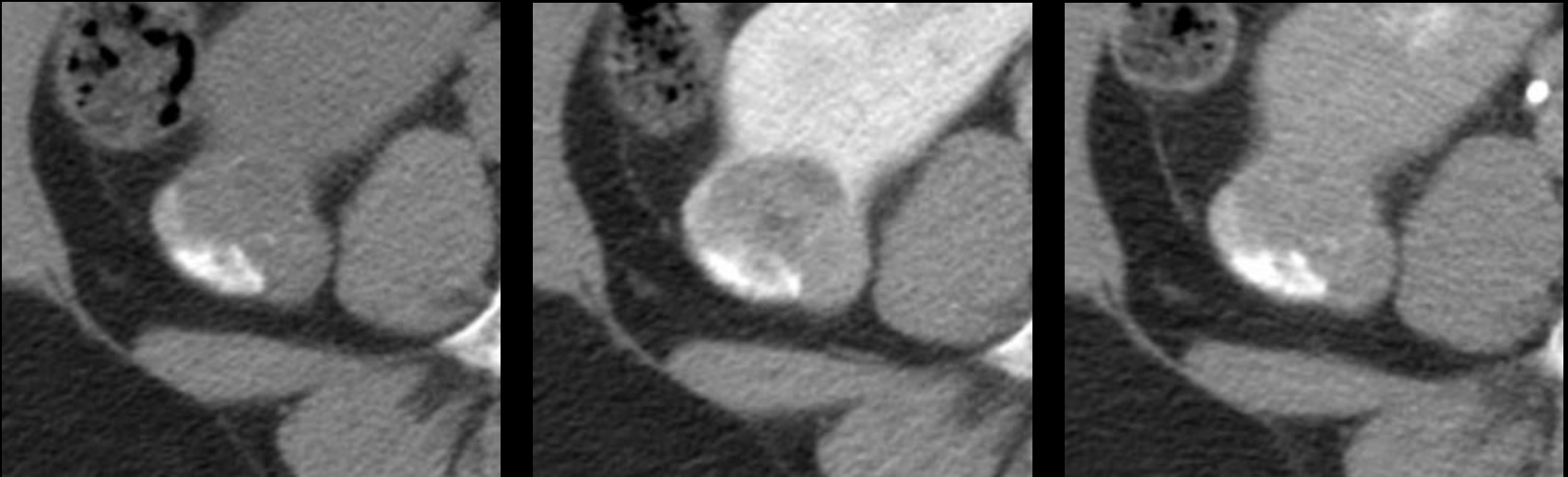
- **Chief complain**

Incidental finding of a right renal tumor

Imaging studies

- Abdominopelvic CT (+C) (2019.08.19)

Abdominopelvic CT



- ✓ A 3.3cm-sized calcified heterogenous space-taking lesion in the posterior aspect of right kidney with exophyte
- ✓ A large well defined mild hyperdense space-taking lesion with mild contrast enhancement in right pelvis, suggestive of a solid right ovarian neoplasm

Differential Diagnoses

- Renal cell carcinoma with calcification

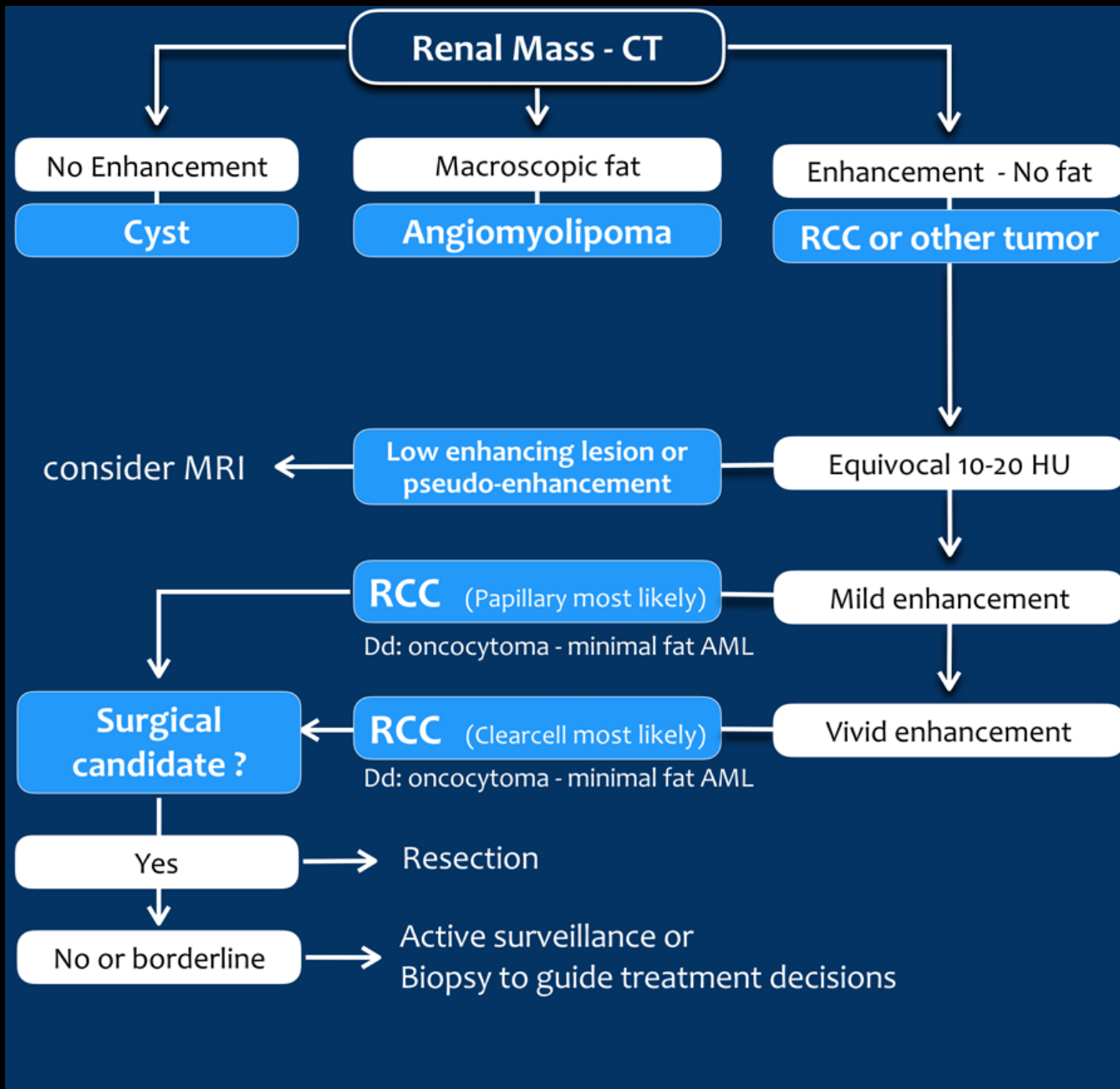
→ Pathology report

Metanephric adenoma

Metanephric adenoma

- Rare, benign epithelial renal neoplasm
- Most common around the 5th to 6th decades, with a 2:1 female predominance
- Asymptomatic in many patients
- Well-defined, unencapsulated, solitary solid mass
- Difficult to differentiate from renal cell carcinomas on imaging alone





Thank you for your attention