

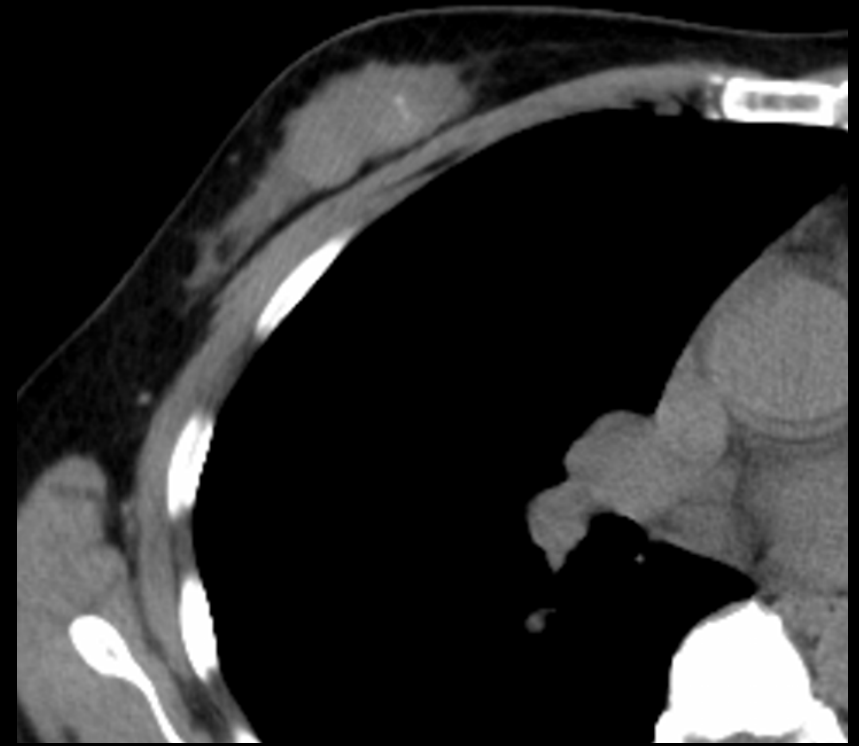
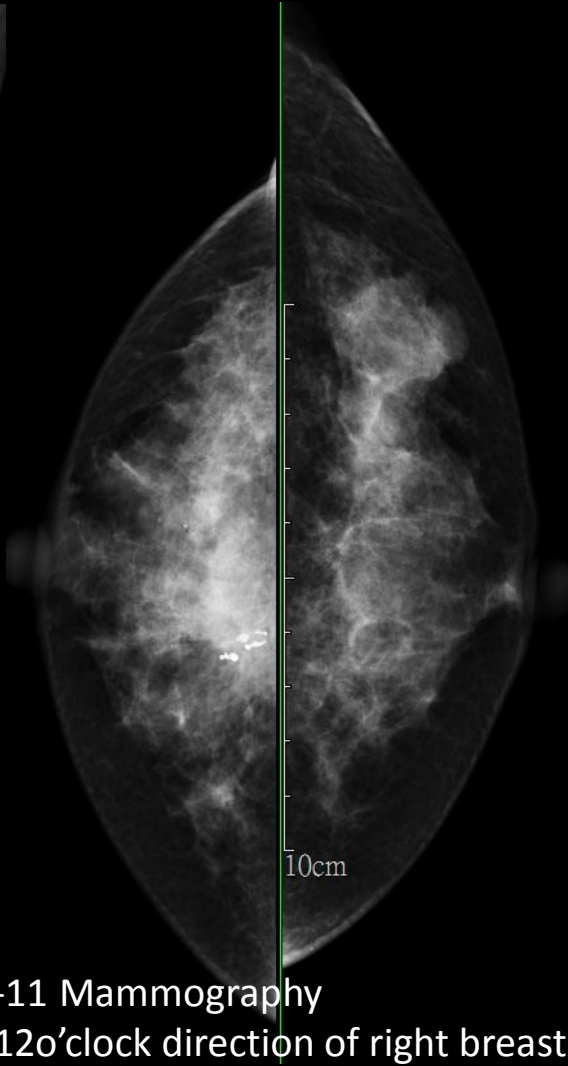
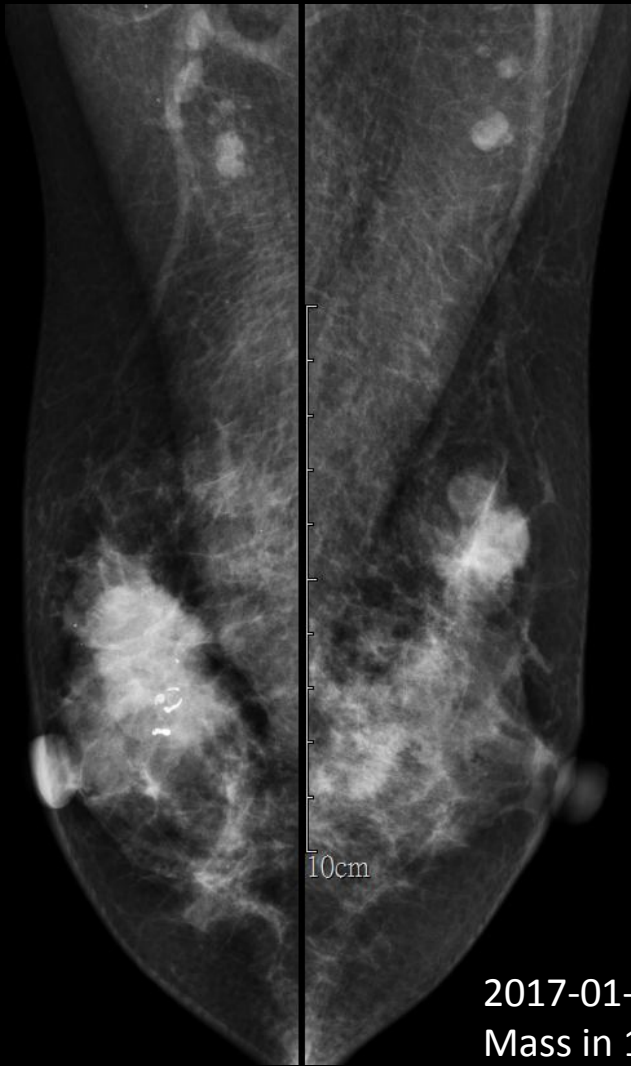
Case 4

49F

Breast mass was found for 0.5 years

Images

- 2017-01-11 Mammography
- 2017-01-11 Breast sonography
- 2017-02-06 Chest CT



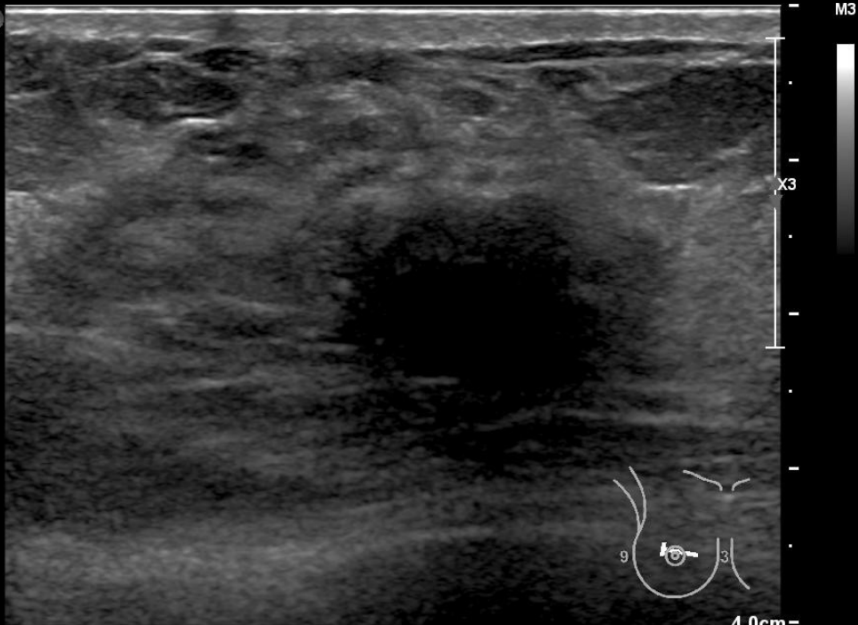
2017-01-11 Mammography
Mass in 12o'clock direction of right breast
Mass in UOQ of left breast

DrHuang
L12-5
48Hz
RS

2D
45%
Dyn R 60
P Low
Res
TAC1

1150.0 MI 0.8

M3



4.0cm

DrHuang
L12-5
32Hz
RS

2D
45%
Dyn R 60
P Low
Res
TAC1

1150.0 MI 0.7

M3



✕ Dist 2.31 cm

✕ Dist 1.54 cm

4.0cm

Pathology

- Breast, right, 12/2 cm, core needle biopsy, invasive ductal carcinoma
- Lymph node, axilla, right, sentinel, dissection, carcinoma, metastatic (2/11)
- Breast, right, total mastectomy with nipple sparing, invasive ductal carcinoma