

# Case 5

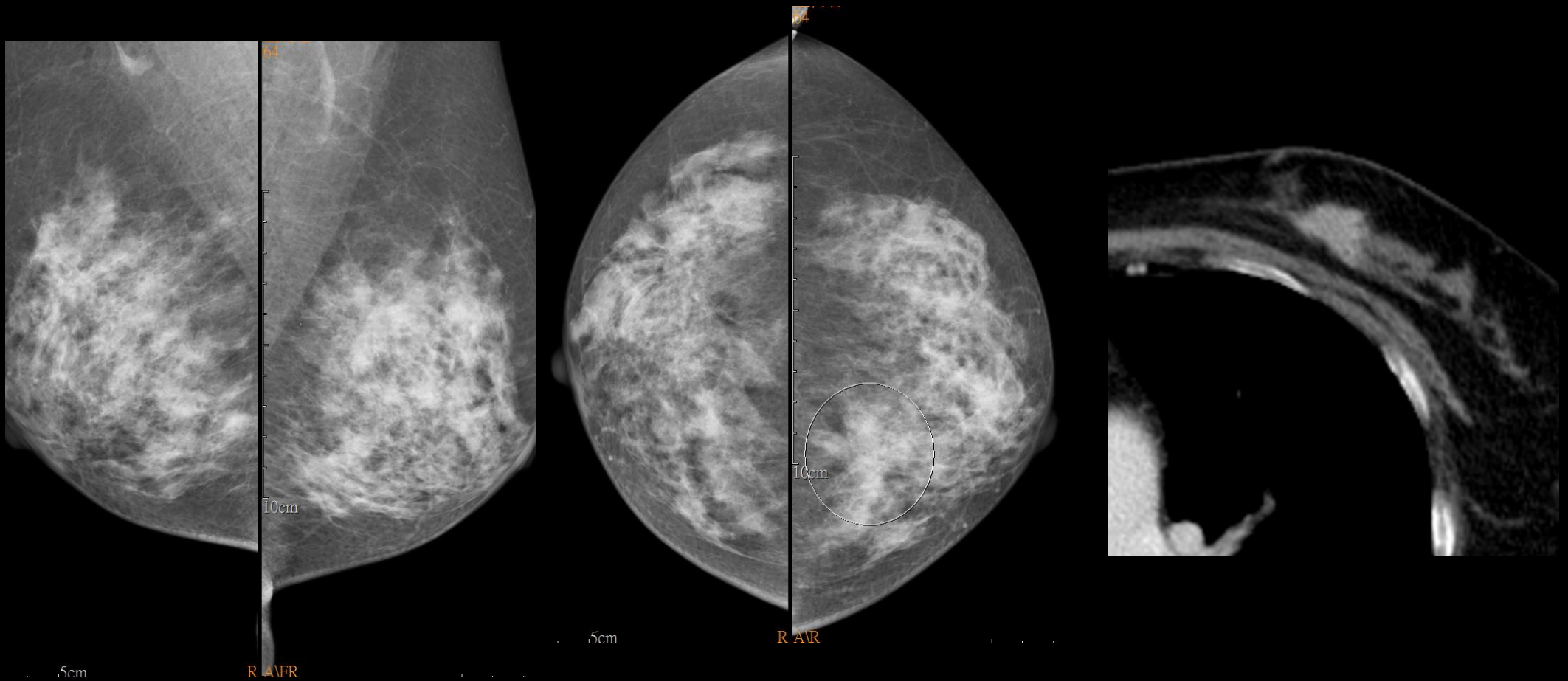
64F

Breast mass was found for 2 months

# Images

---

- 2017-08-05 Mammography
- 2017-08-28 Breast sonography
- 2017-09-07 Chest CT



2017-08-05 Mammography  
Architectural distortion in inner portion of the left breast

DrDU  
L12-5  
32Hz  
RS

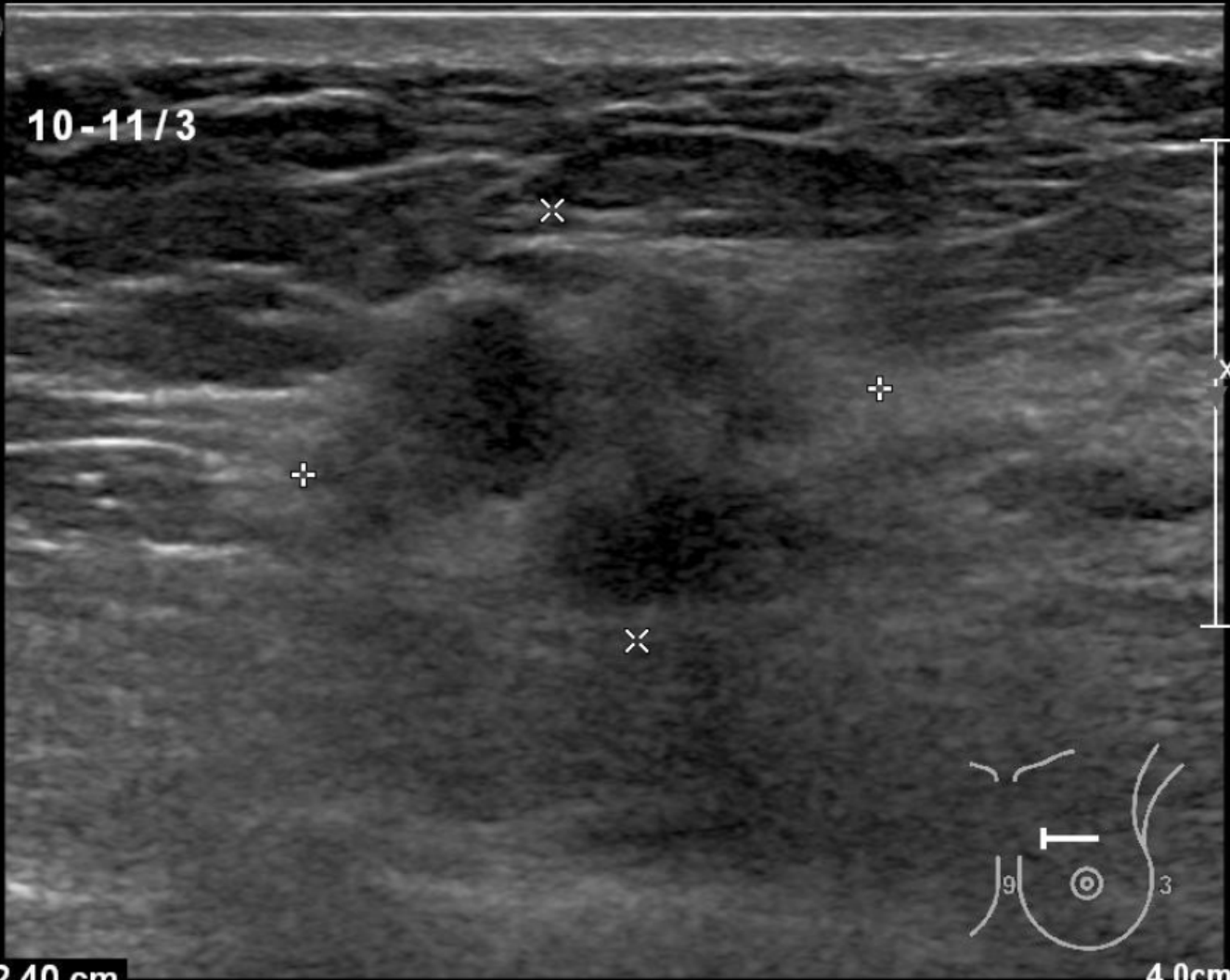
1150.0 MI 0.7

2D  
42%  
Dyn R 60  
P Low  
Res  
TAC1

P

10-11/3

M3



+ Dist 2.40 cm

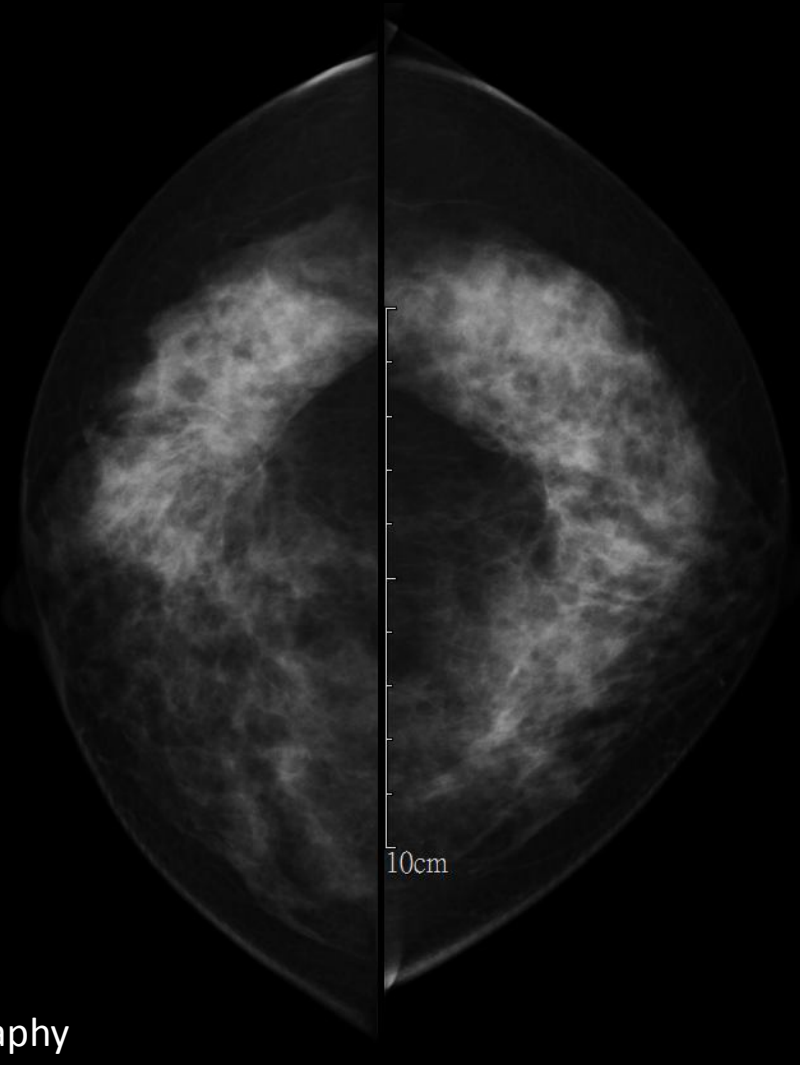
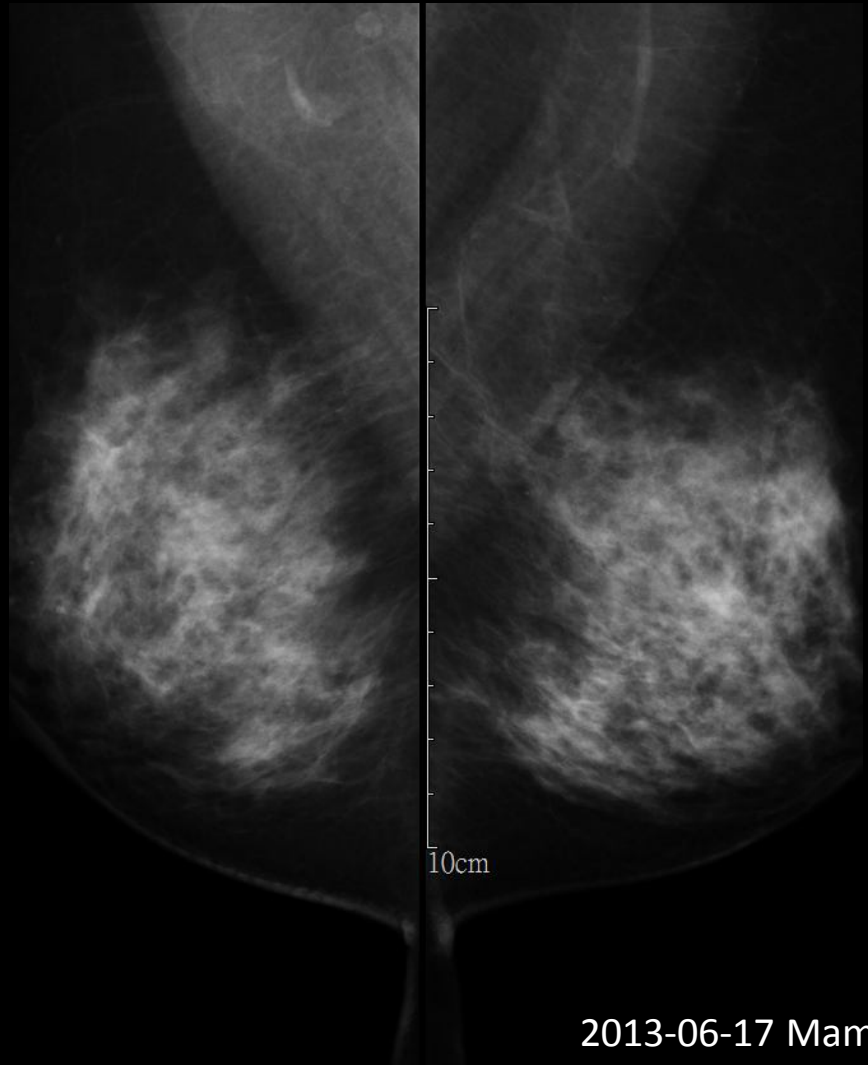
x Dist 1.81 cm

4.0cm

# Images

---

- 2013-06-17 Mammography



2013-06-17 Mammography

# Pathology

---

- Breast, left, 11/4 cm, core needle biopsy, invasive ductal carcinoma
- Lymph node, axilla, sentinel, left, dissection, carcinoma, metastatic (1/5)
- Breast, left, status post chemotherapy, modified radical mastectomy, invasive ductal carcinoma, residual