

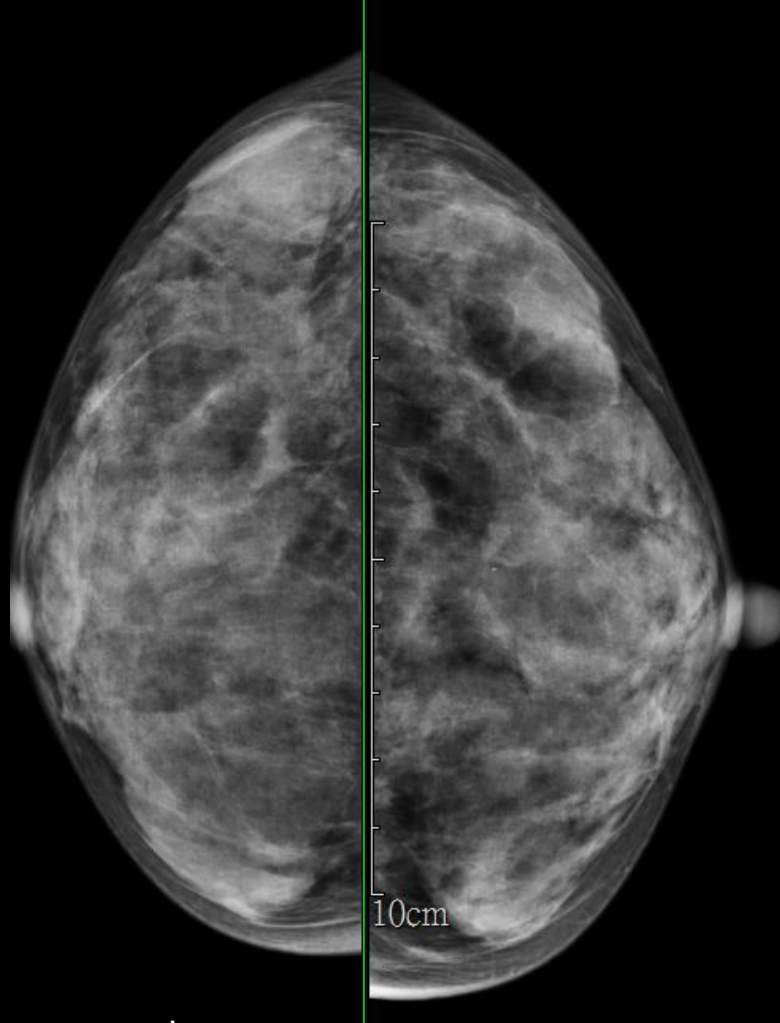
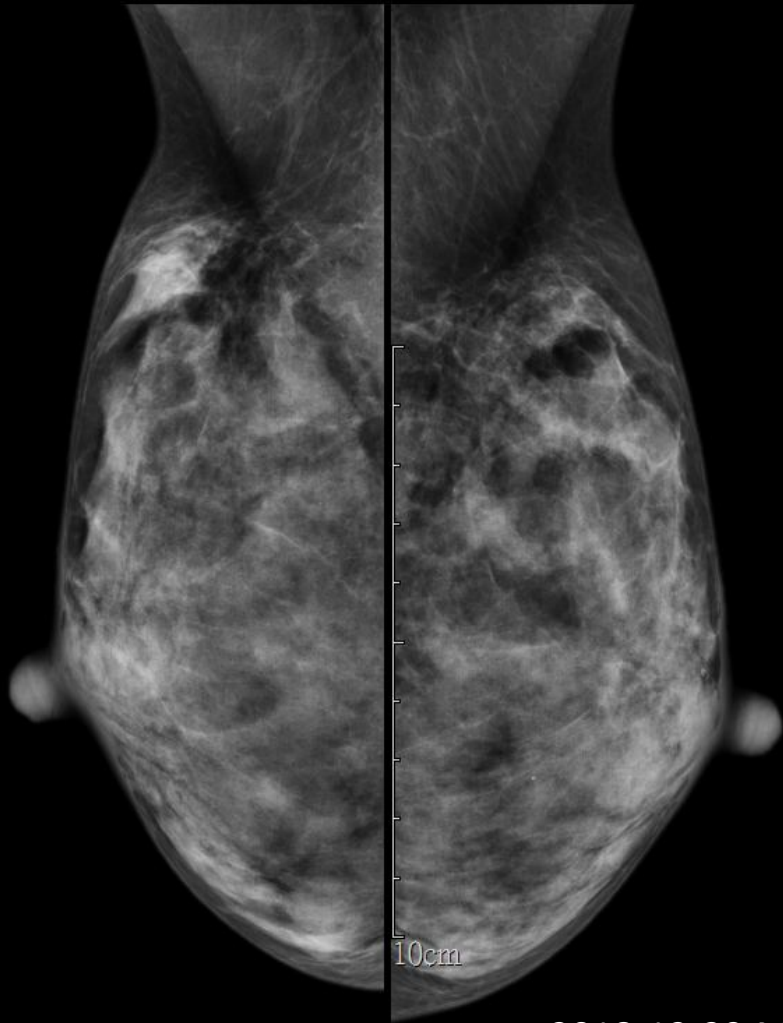
Case 7

58F

Palpable tumor for weeks

Images

- 2018-12-29 Mammography
- 2018-12-27 Breast sonography
- 2018-12-29 Chest CT

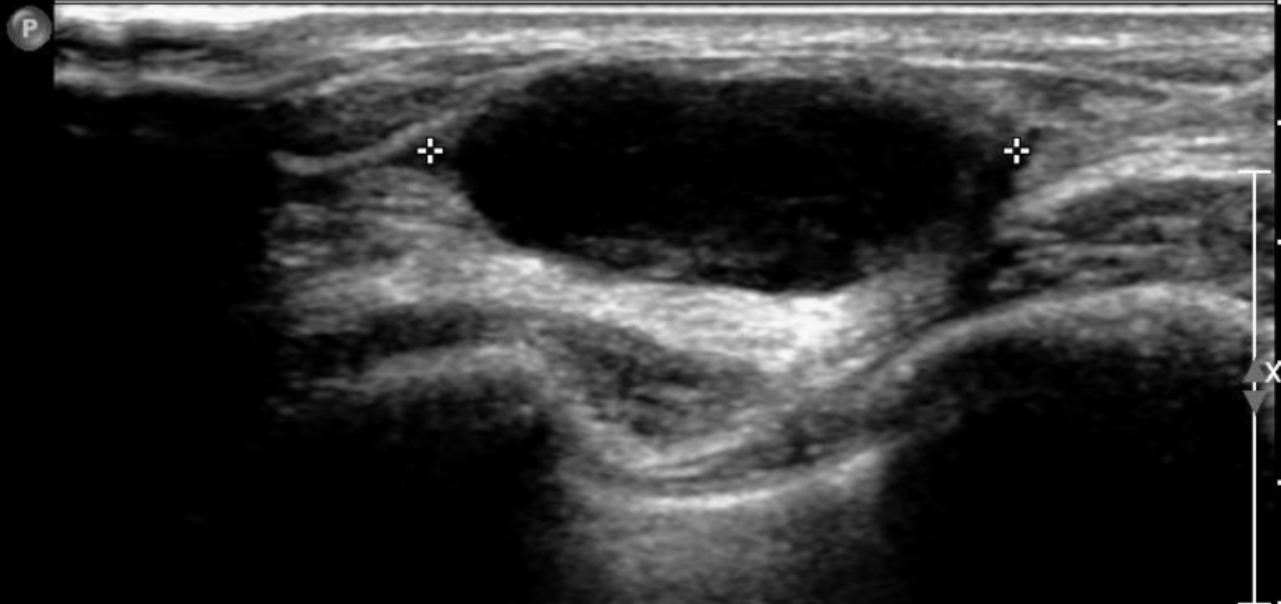


2018-12-29 Mammography

FR 42Hz
RS

2D
63%
C 50
P Med
Gen
TAC1

M4



2/3.5



4.0-

✦ Dist 2.44 cm

Pathology

- Breast, 2/5 cm, left, core needle biopsy, invasive ductal carcinoma
- Lymph node, axilla, left, sentinel node, dissection, no carcinoma involved (0/5)
- Breast, left, partial mastectomy, invasive ductal carcinoma