

Case4

45 Y/O WOMAN

LYMPHANGIOLEIOMYOMATOSIS (LAM)

Brief history

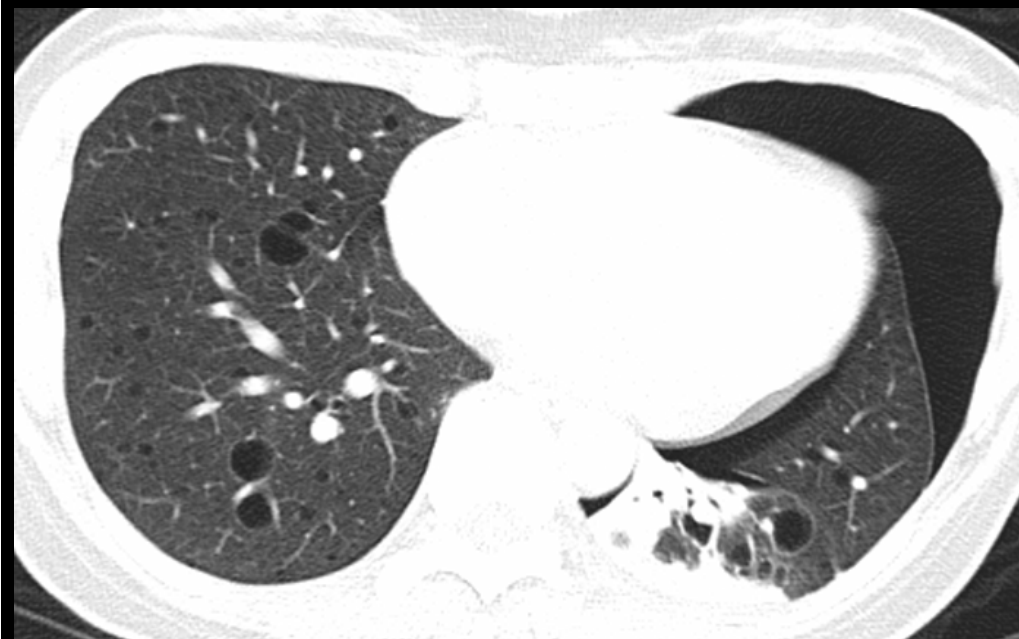
- 45 y/o woman
- PH:
 - Left renal angiomyolipoma with post robotic left partial nephrectomy
 - Adenomyosis with post Robotic total hysterectomy
- Chief complain
 - Sudden onset left side chest pain and mild hemoptysis on 2 days ago

Imaging

- CXR
- Chset CT

R B





DDx:

- Lymphangiomyomatosis (LAM)
- Langerhans cell histiocytosis (LCH)
- lymphocytic interstitial pneumonitis (LIP)

Lymphangiomyomatosis (LAM)

- Thin walled cysts of variable sizes surrounded by normal lung parenchyma
- Recurrent episodes of pneumothorax are common
- Interlobular septal thickening
- Chylothorax
- Sporadic or associated with TS

Langerhans cell histiocytosis (LCH)

- Nodules
 - more pronounced early in the disease
 - centrilobular distribution, may also be peribronchial or peribronchiolar
- Cysts
 - more pronounced later in the disease
 - usually less than 10 mm in diameter
 - usually thin-walled

Final diagnosis

- Lymphangiomyomatosis (LAM)
- Langerhans cell histiocytosis (LCH)
- lymphocytic interstitial pneumonitis (LIP)

- END