

**CASE 3**

**25 Y/O MAN**

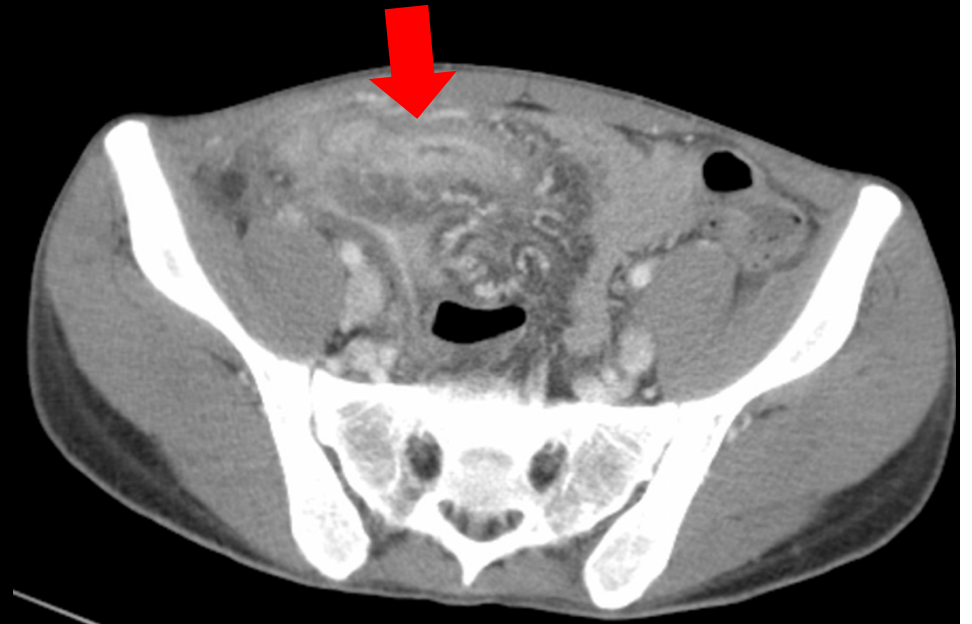
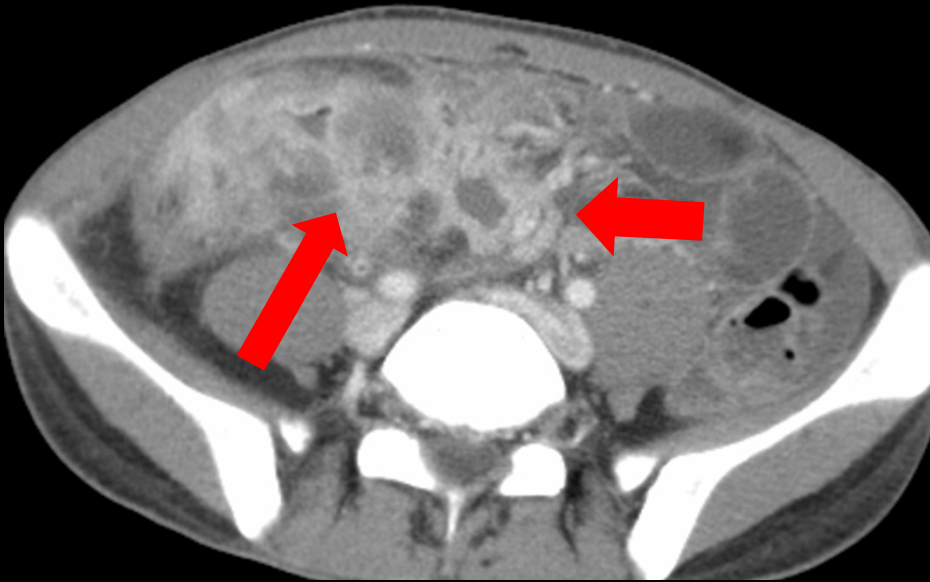
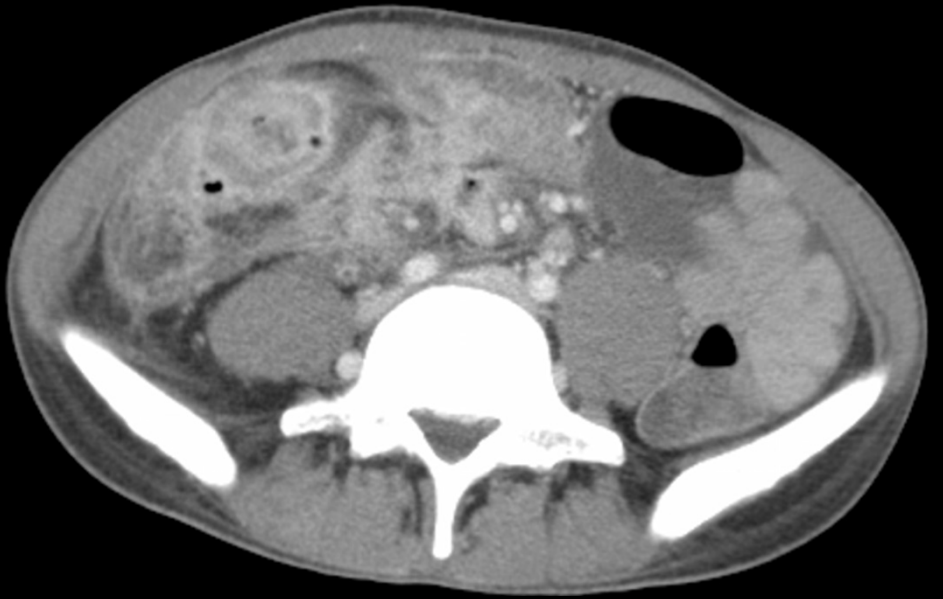
# Brief history

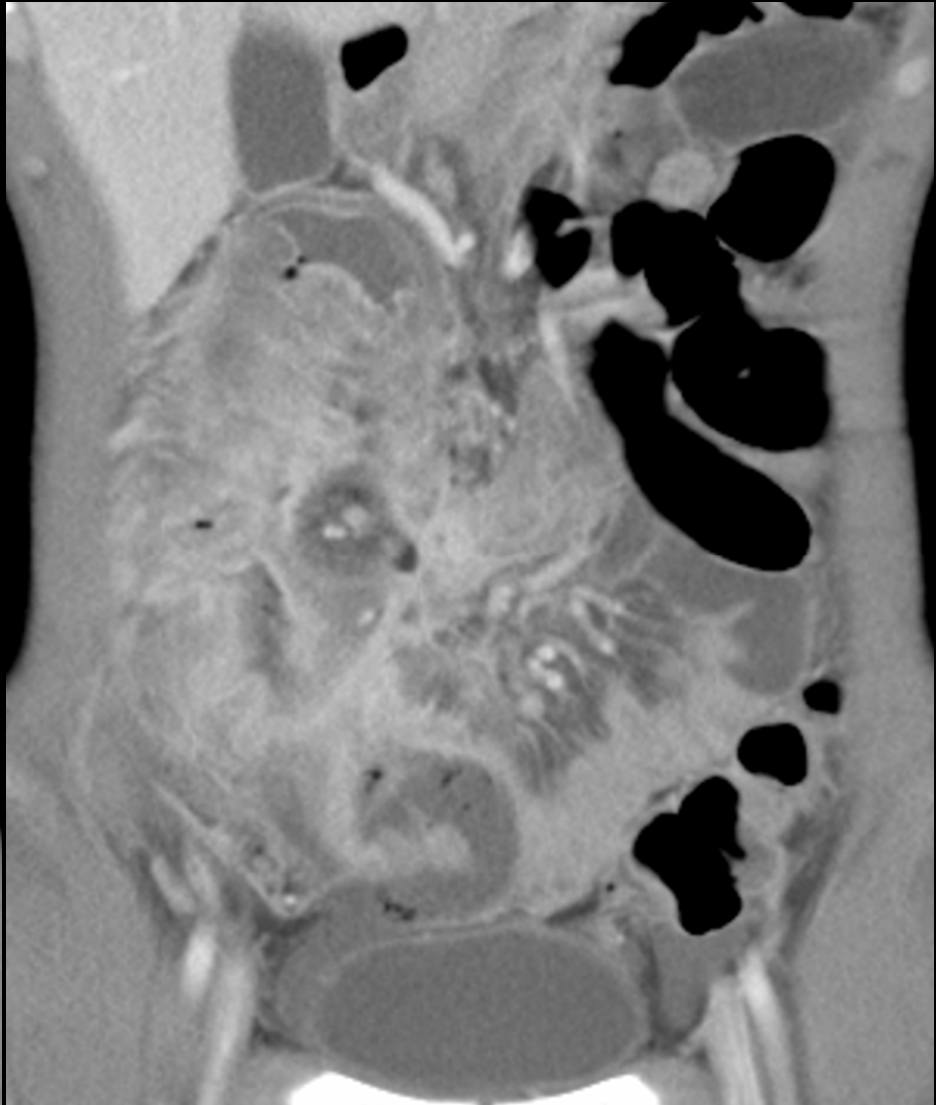
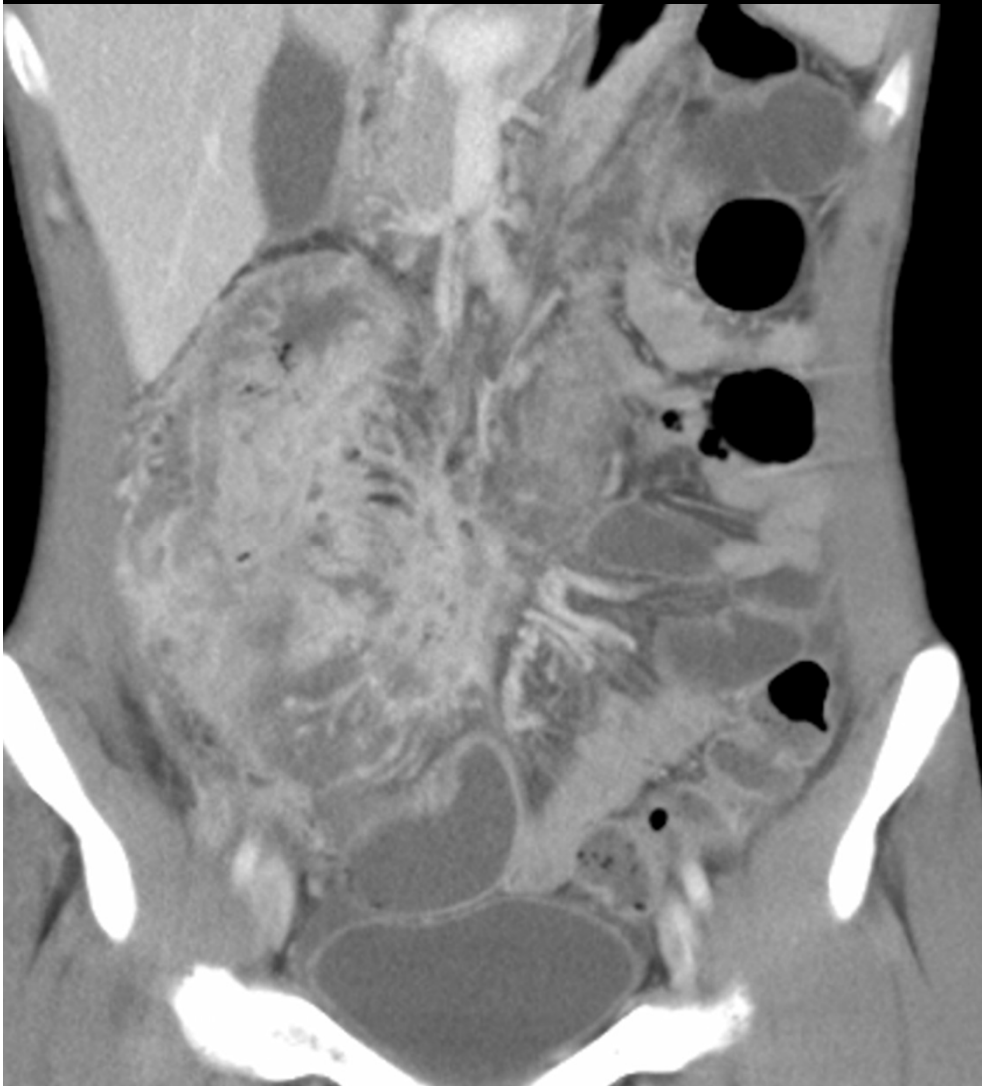
- 25 y/o man
- Chief complain:
  - RLQ pain for 3 months
- PHx:
  - G6PD deficiency

# Imaging studies

- Colon series
- After a year, abdominal pain again=> Abdomen CT (NoC +C)







- DDX:
  - Crohn disease
  - Ulcerative colitis
  - Appendicitis
  - Diverticulitis
  - Ileocecal tuberculosis

## Crohn

80% of patients have  
SB involvement

50% have ileocolitis

20% have disease  
limited to colon

Only 10% have rectal  
involvement

## UC

Rectum only (30%),

rectum and distal colon  
colon (40%),

pancolitis (30%)

Terminal ileum affected  
in minority of patients



# Ileocecal tuberculosis



- Risk :immunocompromised
- GI TB: Ileocecal region 90%
- pulled-up cecum, cone shape

