

CASE 4

39 Y/O WOMAN

Brief history

- 39 y/o woman
- PHx: No major disease
- Chief complain:
 - The patient complain of painful protruding tumor at 4th fingernail bed.

Imaging studies

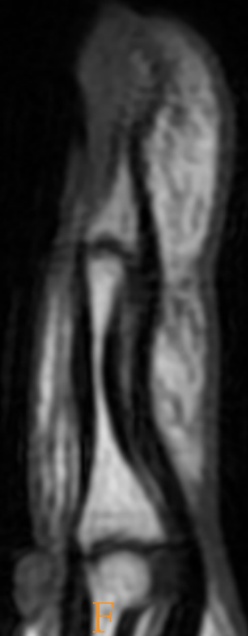
- Xray
- MRI +C

4th

4th

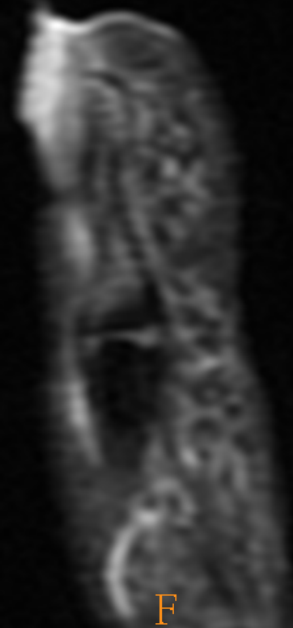


T1



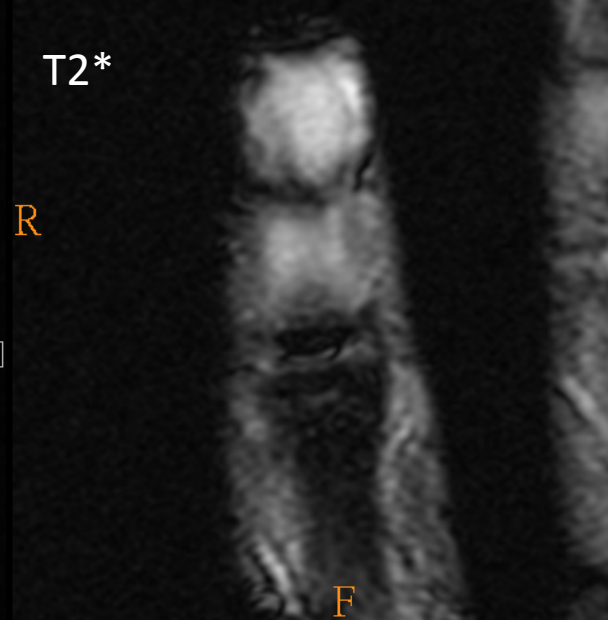
F
H

STIR



F
P

T2*

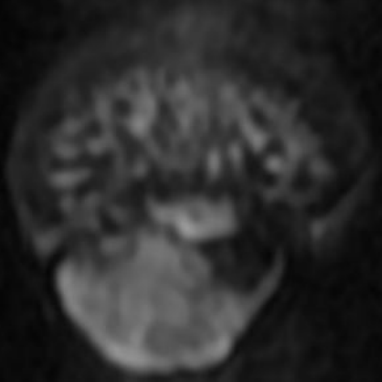


F
P

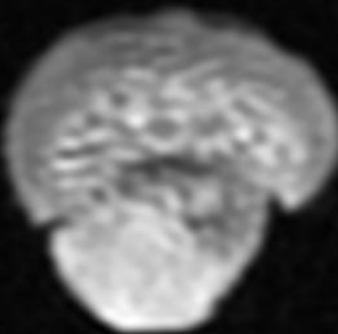
T1+C



T2



T1+C



P A

P R

P L

R L

DDx:

- **Glomus tumor**
- Hemangioma
- Giant cell tumor of tendon sheath

- Subungual Exostosis
- Nora lesions (Bizarre parosteal osteochondromatous proliferation)
- Soft-Tissue Chondroma

Glomus tumor

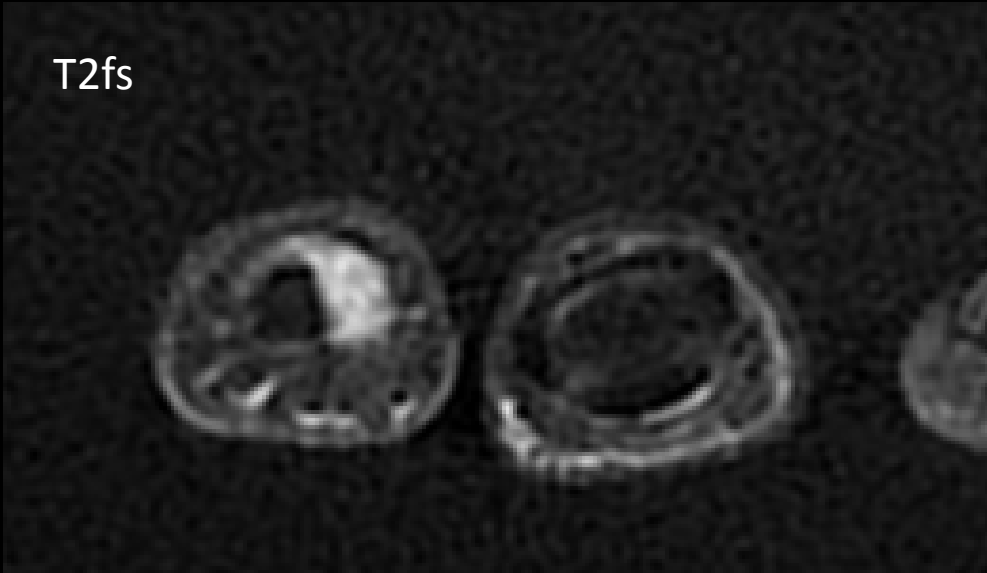
- Location
 - Propensity to involve subungual region
 - Almost always in superficial soft tissues
 - Distal extremities (fingers and toes) most common
- Size
 - Typically < 2 cm; mean 13 mm
- MRI features
 - T1: Isointense
 - T2: heterogeneous to hyperintense
 - T1+C: Strong enhancement

Glomus tumor

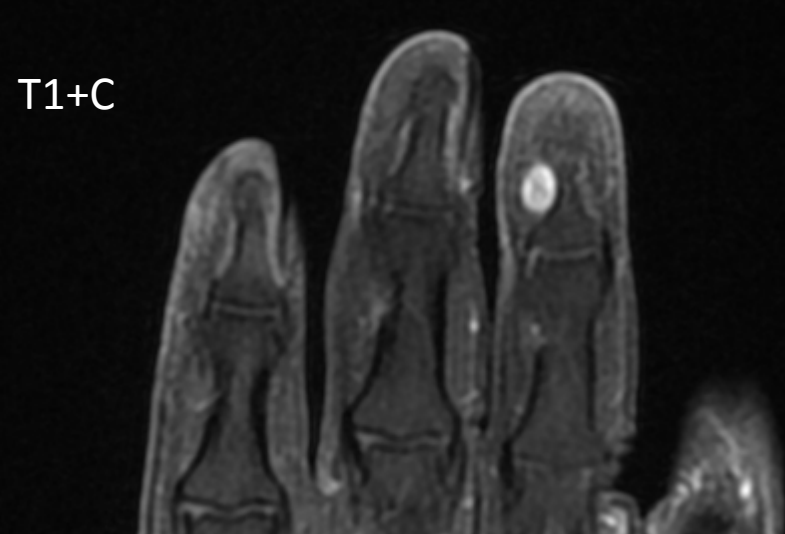
T1



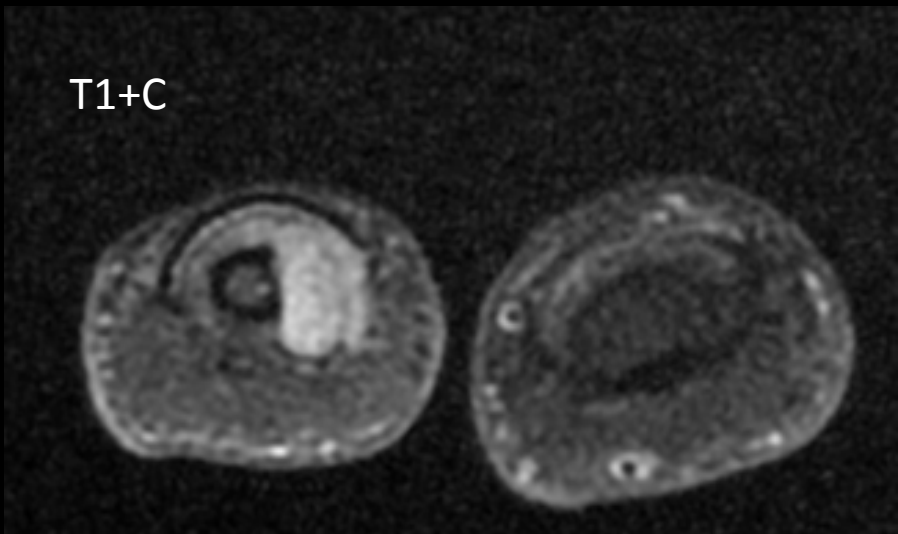
T2fs



T1+C



T1+C



病理診斷：Skin, finger, 4th, left, excision, glomus tumor

組織報告：The specimen submitted consists of one tissue fragment measuring 0.6 x 0.4 x 0.2 cm in size, fixed in formalin.

Grossly, it is a piece of skin.

All for section after bisection.

Microscopically, it shows a picture of skin with dermal nodule composed of anastomosing nests and cords of uniform round cells in myxoid stroma. Focal smooth muscle differentiation and investing capillary wall are noted. Neither marked nuclear atypia nor increased mitotic activity is seen. PAS stain highlights the basal lamina surrounding individual tumor cells. The glomus tumor is diagnosed. The surgical margin is involved.

- END