

**CASE 5**

**42 Y/O MAN**

# Brief history

- **Past history**

- alcoholic

- **Chief complain**

- Sudden onset of acute chest pain  
with shortness of breath

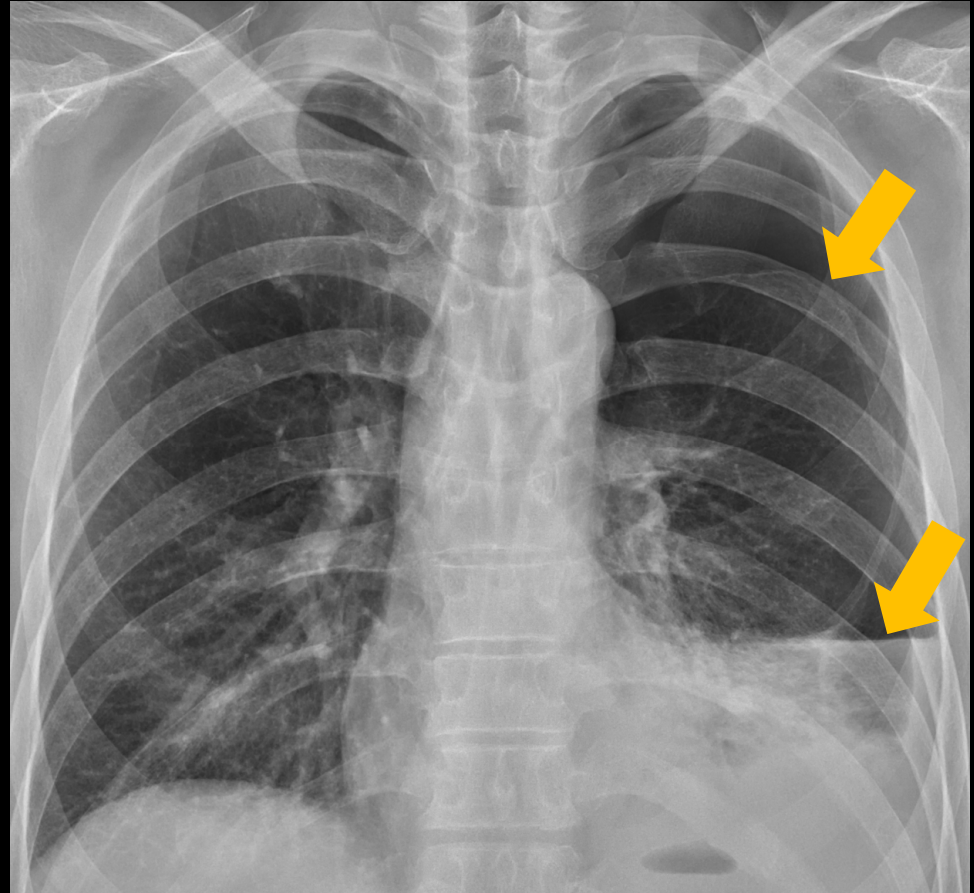
# Imaging studies

CXR

Chest CT +C

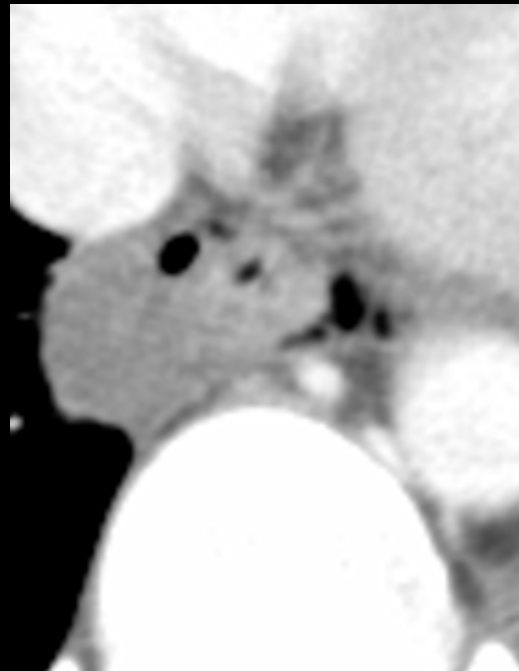
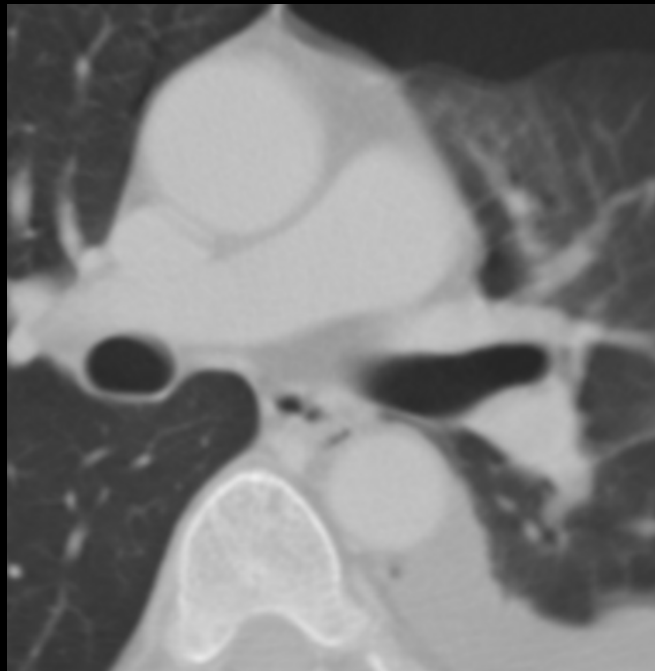
# CXR

- ✓ Hydropneumothorax of the left lung
- ✓ Elevation of left hemidiaphragm
- ✓ left side pleural effusion



# CECT of chest

- ✓ Pneumomediastinum & left pneumothorax
- ✓ Air bubbles and fluid accumulation around the lower esophagus, favor esophageal rupture
- ✓ Pleural effusion



# Differential Diagnosis

- **Boerhaave syndrome**

# Boerhaave syndrome

- Spontaneous oesophageal perforation following forceful vomiting and retching
- **Mackler's triad**
  - ✓ Vomiting
  - ✓ Chest pain
  - ✓ Subcutaneous emphysema
- Radiographic features on CT
  - ✓ Peri-esophageal air collections (esophageal perforation)
  - ✓ Pneumothorax (left sided predilection)
  - ✓ Pneumomediastinum
  - ✓ Pleural effusion (usually left sided)

Thank you for your attention