

# 與大師對談

周宜宏教授

2020-02

- 依照臨床時序，請大師模擬一線放射科醫師；於未知診斷，或者有限度臨床線索之情形下，進行閱片及解讀。
- 鑑別診斷為主要，確定診斷為次要。
- 目的在於學習大師之影像判讀邏輯思考。
- 請大師給予本院影像品質建議。
- Protocols, techniques, etc.

**CASE 1**

**60 Y/O WOMAN**

# Brief history

- 60 y/o woman
- Chief complain:
  - Right renal mass noted at other hospital

# Imaging study

- Abdomen sonography
- Abdomen CT (NOC+C)

Precision A Pure

T

0

5

10

14

6C1

T5.0

19 fps

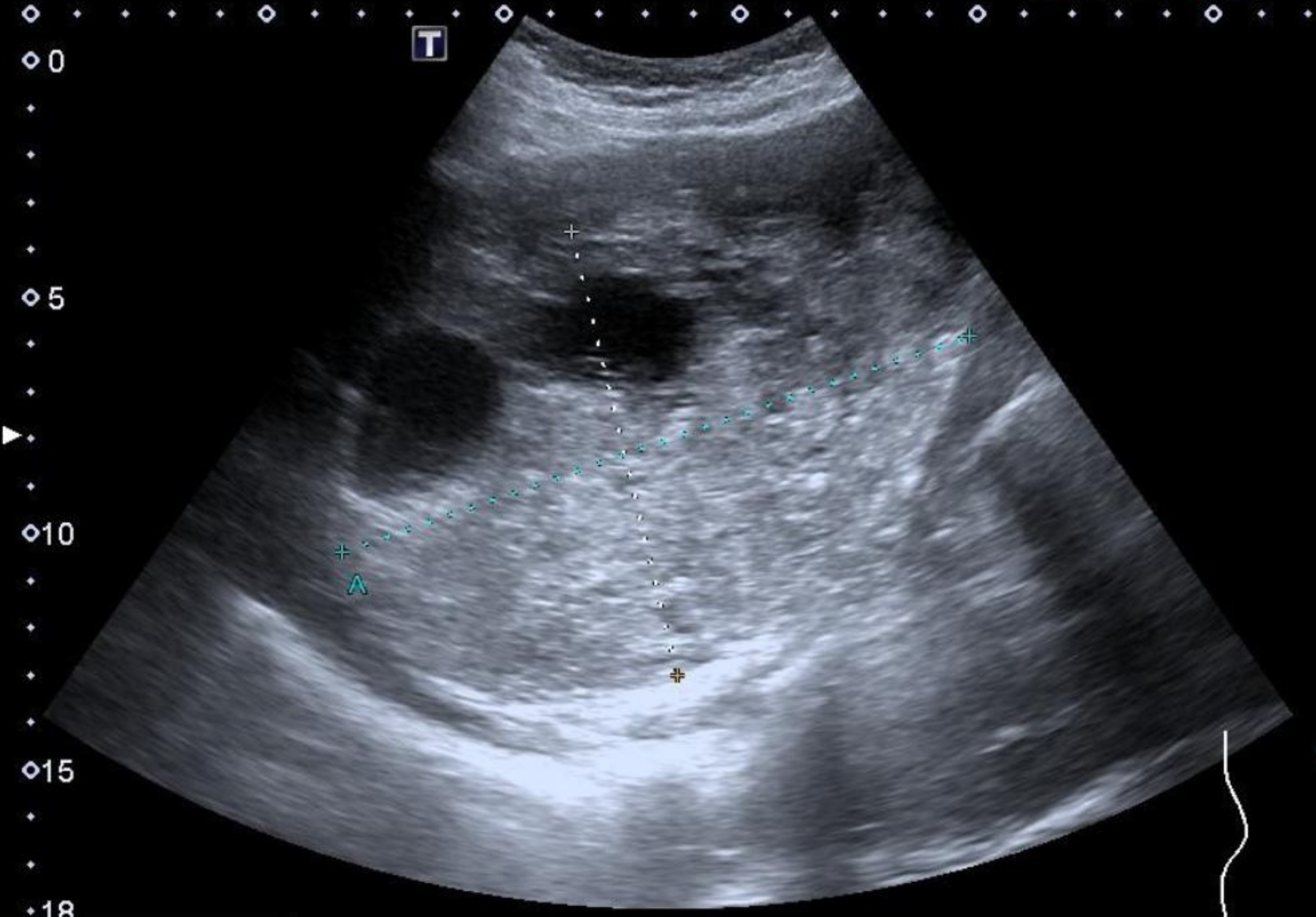
G:85

DR:65

A:2

P:1





6C1  
T5.0  
15 fps  
G:85  
DR:65  
A:2  
P:1

0  
5  
10  
15  
18

Dist A	140.2mm
Dist B	96.5mm



# 38

Precision A Pure

T

0

5

10

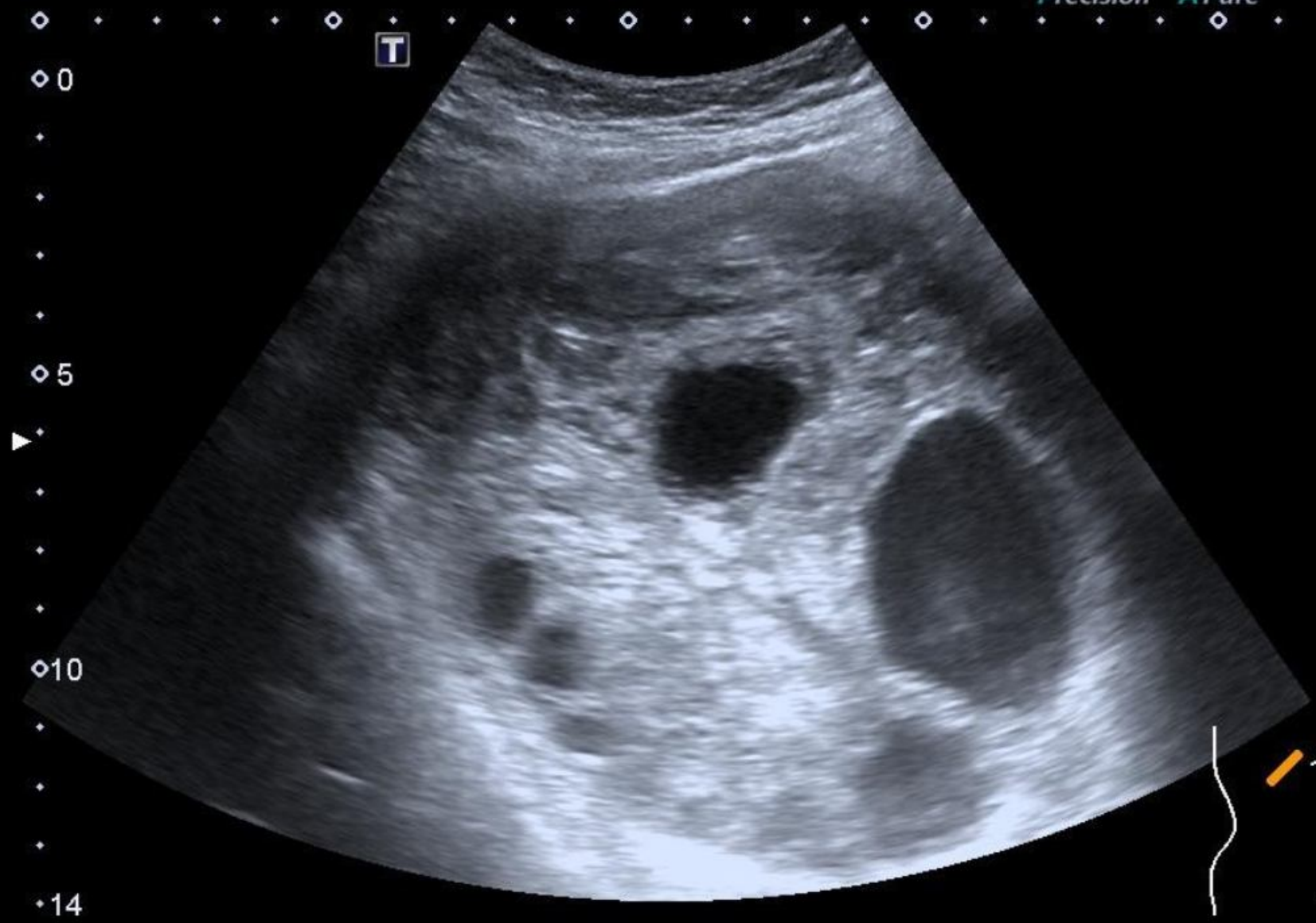
15

17

6C1  
T5.0  
16 fps  
G:85  
DR:65  
A:2  
P:1







6C1  
T5.0  
19 fps  
G:85  
DR:65  
A:2  
P:1

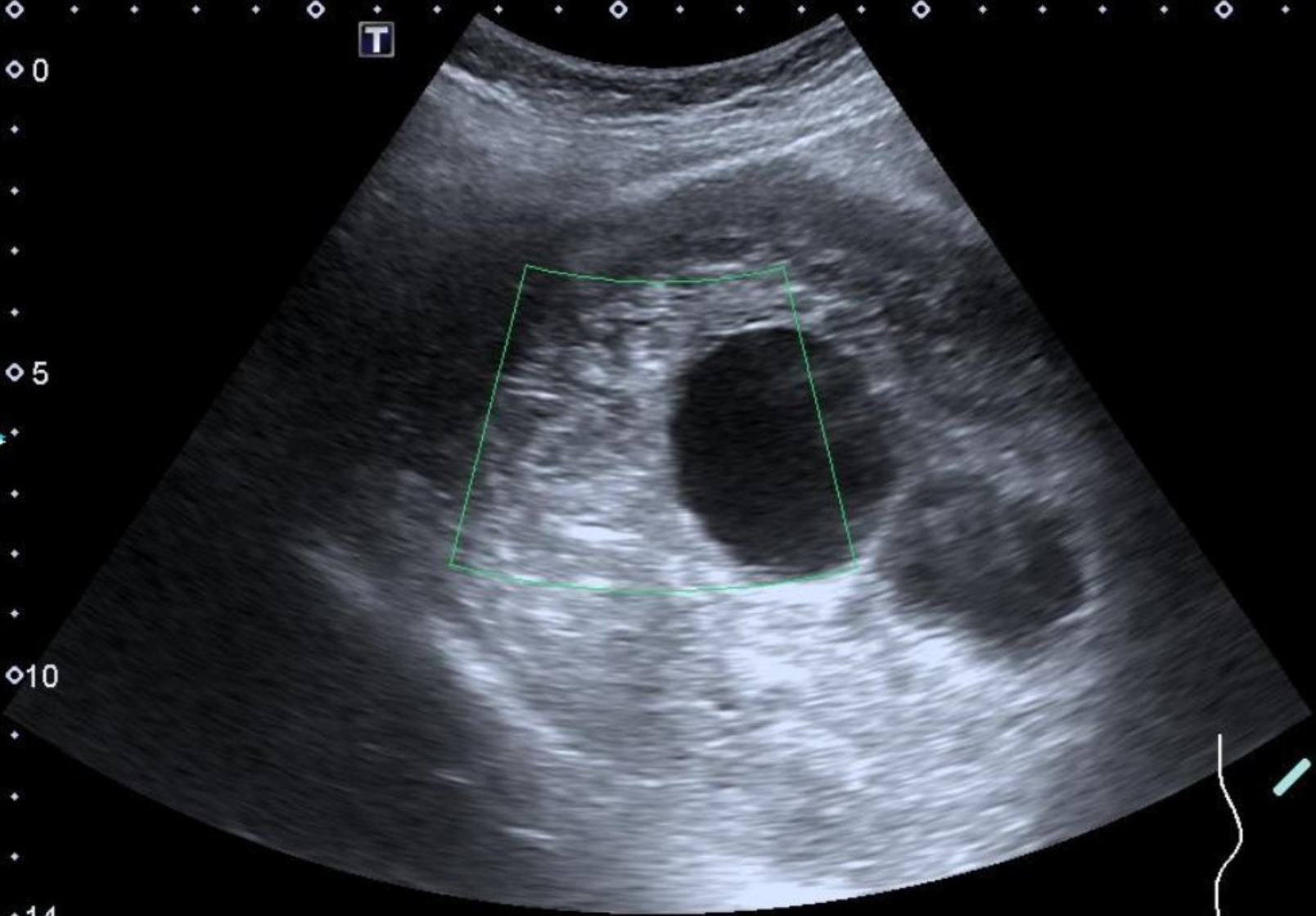
0  
5  
10  
14



# 62

17.1  
17.1  
cm/s

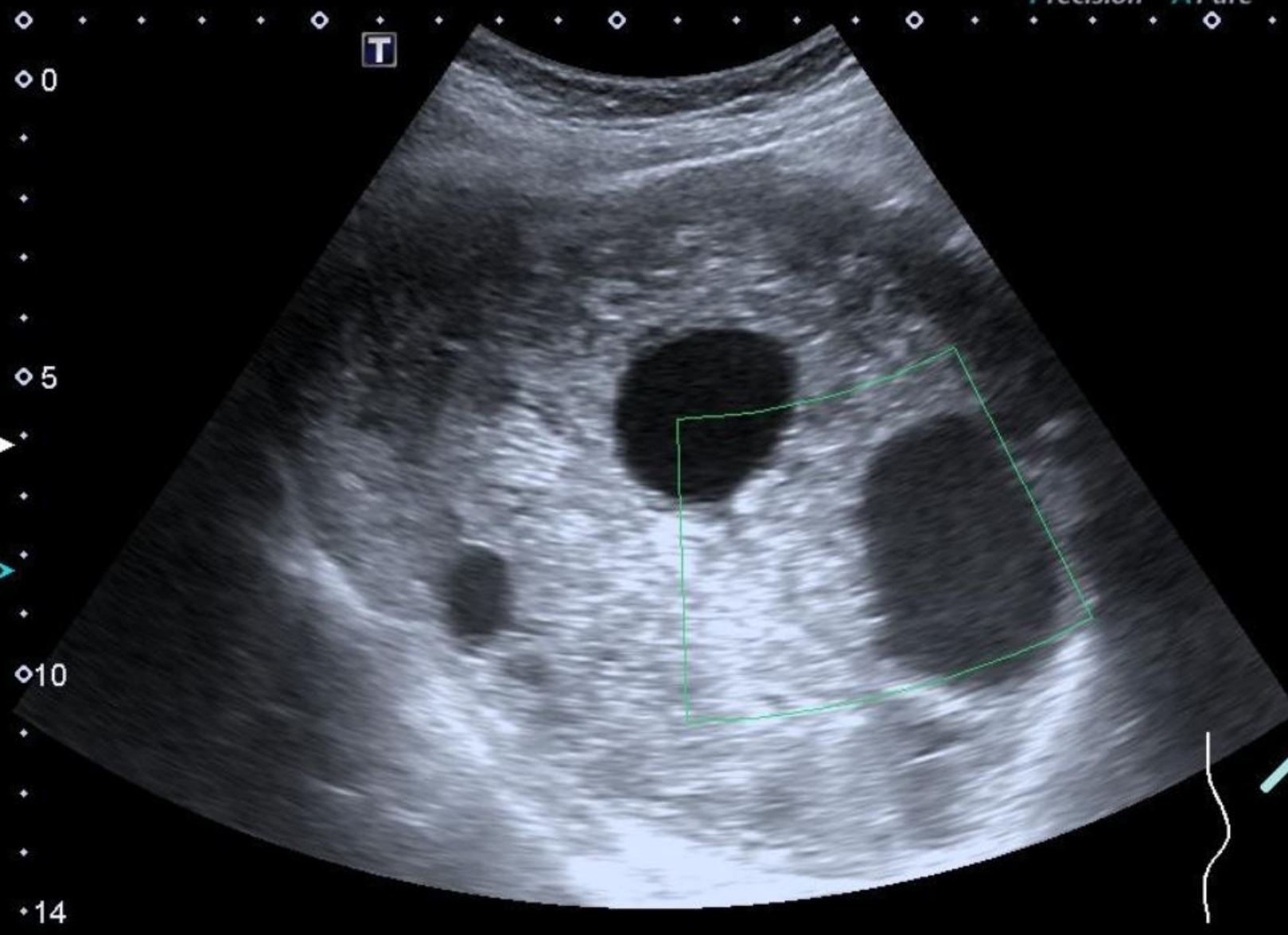
0  
5  
10  
14



6C1  
T5.0  
11 fps  
G:85  
DR:65  
CF 2.2  
CG:33  
5.9k  
F:1



Precision APure



6C1  
T5.0  
11 fps  
G:85  
DR:65  
CF 2.2  
CG:33  
4.9k  
F:1







## DDx:

- Complex renal cysts:
  - Hemorrhagic cyst
  - Proteinaceous cyst
  - Infectious cyst, abscess
- Cystic Renal Cell Carcinoma
- Renal Hematoma
- Renal hydatid cyst (*Echinococcus species*)