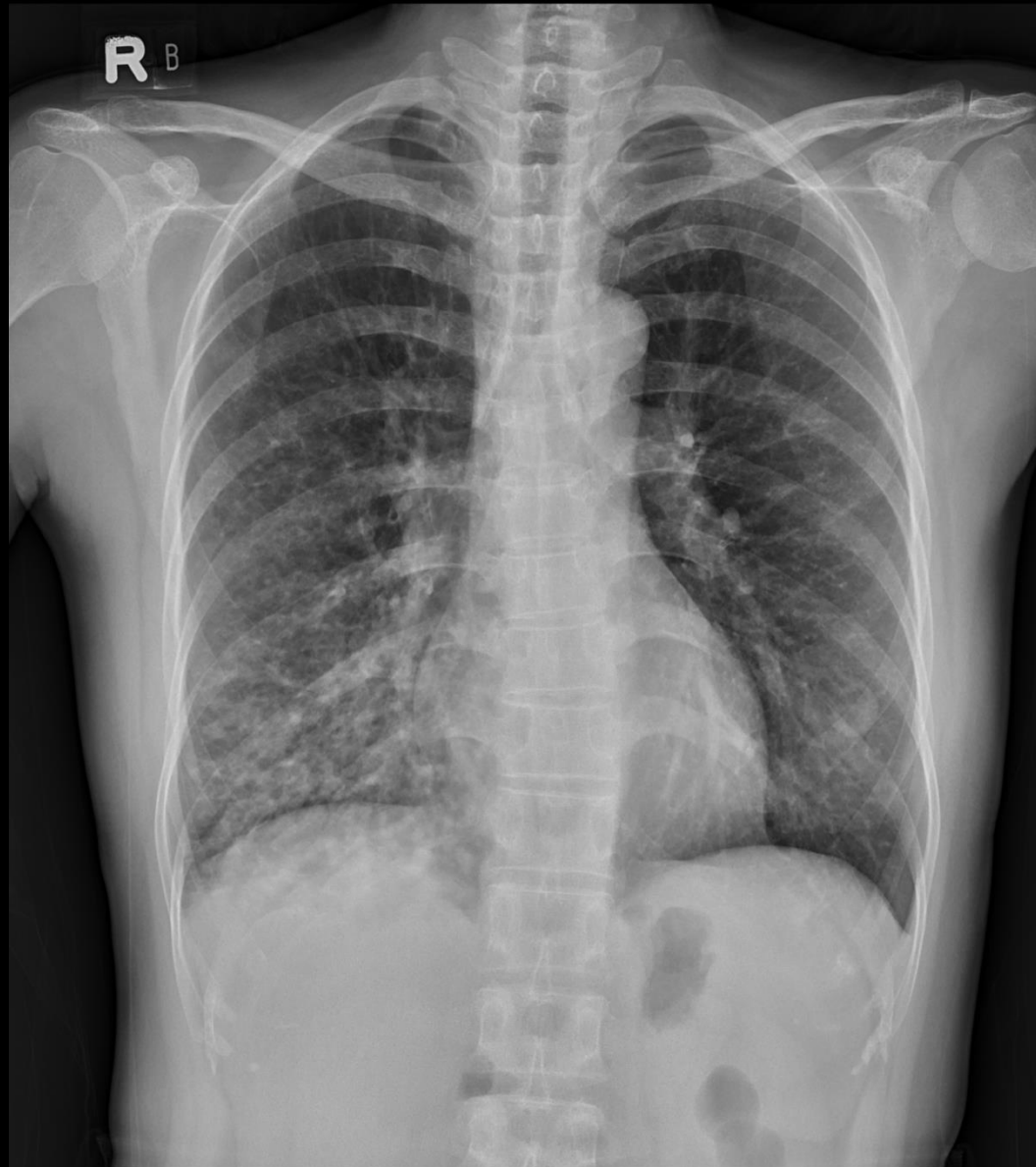


CASE 5

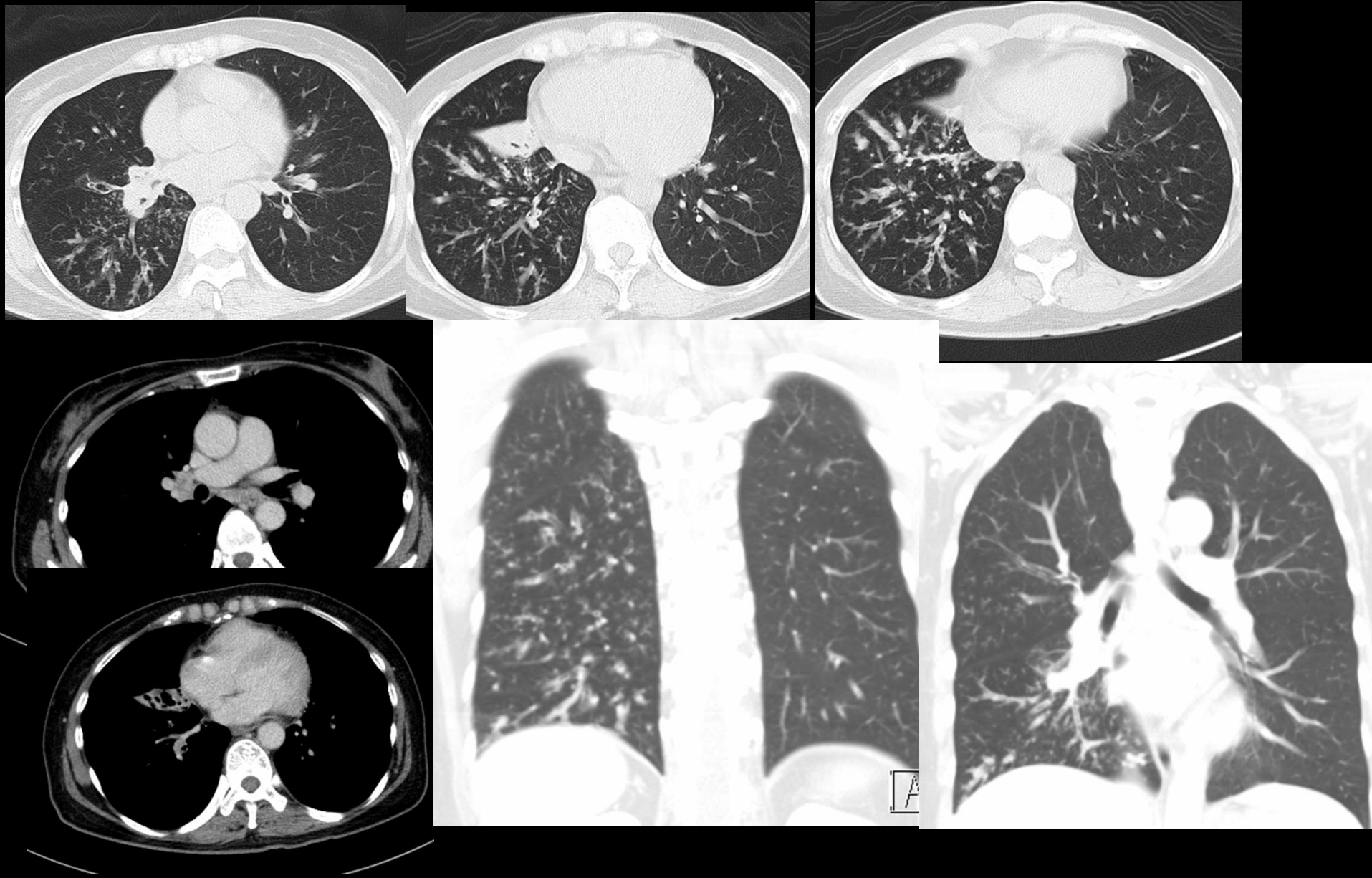
Case 5

- 51 y/o female
- PHx: Ever severe viral infection abroad 1 year ago
- TOCC (-)
- S: Cough and mild shortness of breath for a long time
- O: Rhonchi over right lower lung
- 2020-04-28 CXR
- 2020-05-08 Chest CT

2020-04-28 CXR



2020-05-08 Chest CT



Differential diagnosis

- Fungal infection
 - Pulmonary aspergillosis
 - Cryptococcus
- TB
- NTM

Diagnosis

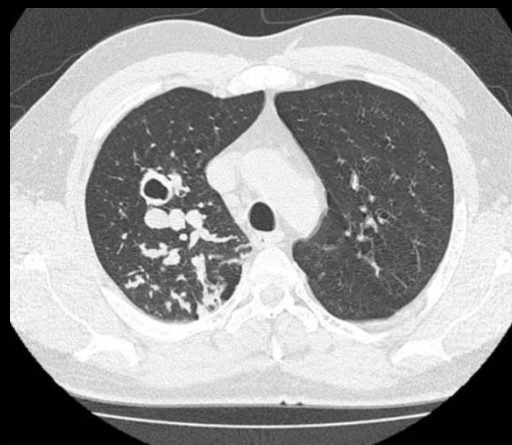
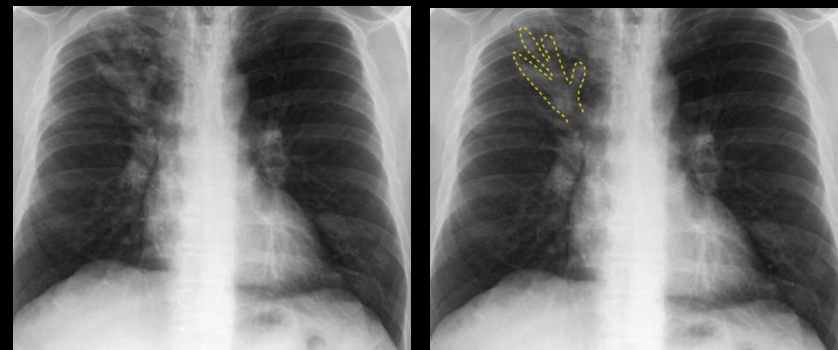
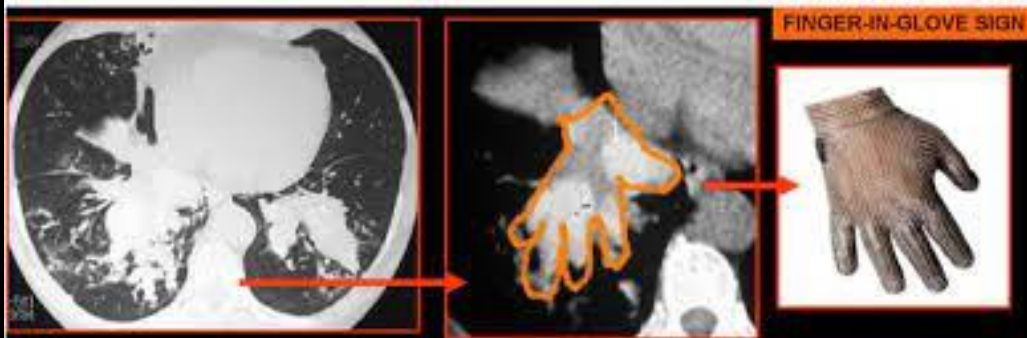
- Pulmonary aspergillosis

簽收日期	1090312	1090312
簽收時間	1405	1405
工作單號	1201310746	1201310747
試管編號	1201310746	1201310747
報告日期	1090313	1090327
報告時間	1438	1514
委外代檢機構		萬芳醫院
Aspergillus Ag(外送)		Positive
Aspergillus Ag(外送)		>6.500 [<0.5]
*Cryptococcus Ag (血液)(委外)	Negative	

簽收日期	1090312	1090312	1090312	1090312	1090312	1090312
簽收時間	1405	1405	1405	1405	1405	1405
工作單號	1900481833	1900481833	1900481833	1900481834	1900481834	1900481834
試管編號	1900481833	1900481833	1900481833	1900481834	1900481834	1900481834
報告日期	1090512	1090318	1090512	1090512	1090318	1090512
報告時間	1126	1046	1126	1127	1046	1127
Culture	TB Sputum 第一套			TB culture (Sputum)		
Acid-fast stain (Sputum 第一套)委外		陰性 (生物參考區間: 陰性)				
Acid-fast stain (Sputum 第二套)委外					陰性 (生物參考區間: 陰性)	
Acid-fast stain (Sputum 第三套)委外						
委外代檢機構		市立萬芳醫院			市立萬芳醫院	
TB 細菌培養結果			陰性 (生物參考區間: 陰性)			陰性 (生物參考區間: 陰性)

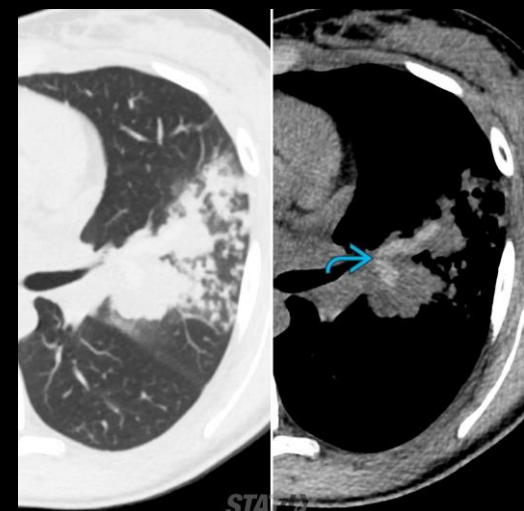
Pulmonary aspergillosis

- A collective term to refer to a number of conditions of the aspergillus species infection (usually *Aspergillus fumigatus*)
 - ✓ Aspergilloma: Mass-like fungus balls
 - ✓ Invasive aspergillosis: Angioinvasive aspergillosis, subacute invasive pulmonary aspergillosis, airway invasive aspergillosis
 - ✓ Allergic bronchopulmonary aspergillosis (ABPA)
- ABPA: Most common in patients with longstanding asthma
 - ✓ Fleeting pulmonary alveolar opacities: common
 - ✓ **Centrilobular nodules**: Dilated and opacified bronchioles
 - ✓ Bronchiectasis
 - **Central, upper lobe saccular bronchiectasis** involving segmental & subsegmental bronchi is characteristic
 - Muroid impaction results in a bronchocoele, the **finger in glove sign**
 - High attenuation mucus \pm (calcification) in impacted mucus in ~30%



"Glove like" opacity in the right upper zone (yellow dotted line) represents sputum plugged bronchiectasis

Air-filled bronchiectasis is seen bilaterally (green arrows)



Axial NECT in lung (left) and soft tissue (right) window

A multinodular bronchocentric lingular consolidation with intrinsic tubular branching high-attenuation mucus (cyan curved arrow) in left upper lobe segmental bronchi without significant bronchiectasis (ABPA-S)

thank you