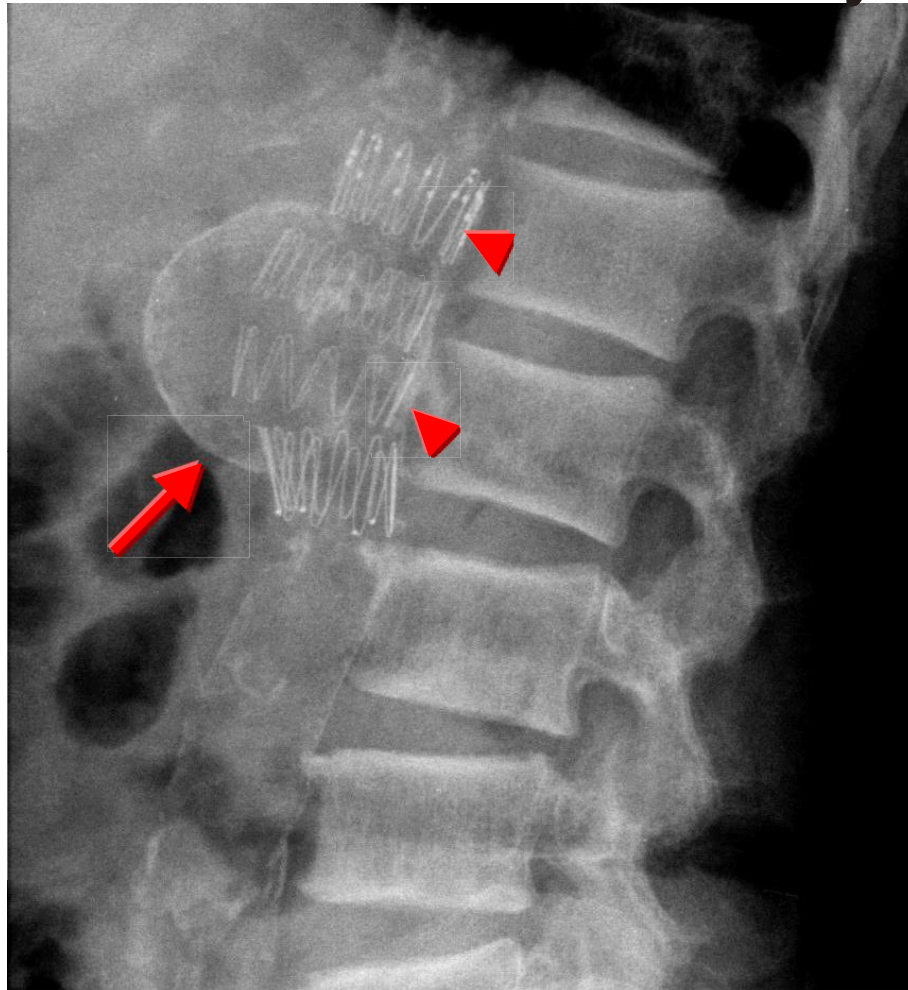


# Abdominal aortic aneurysm with stent graft



AAA (arrow) is a weak area in the aorta. It bulges like a balloon & can burst if the balloon gets too big as blood flowing through. Interventional repair is a technique to introduce a catheter & stent graft (arrow heads) inside the patient's artery under imaging guidance. The stent graft is advanced to the aneurysm, then opened, creating new walls in the blood vessel through which blood flows.