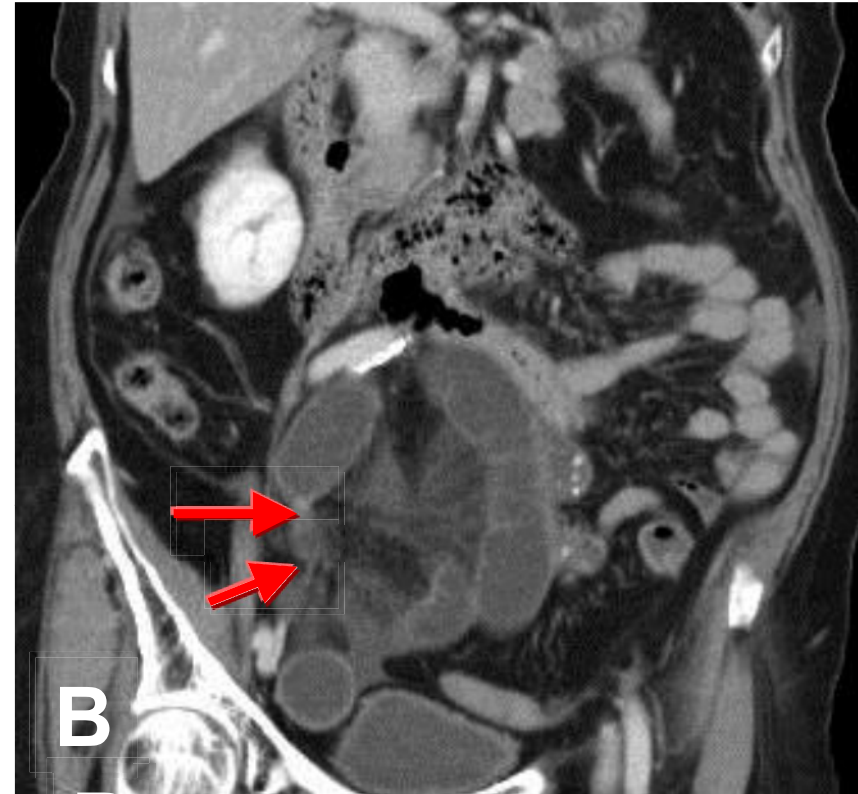
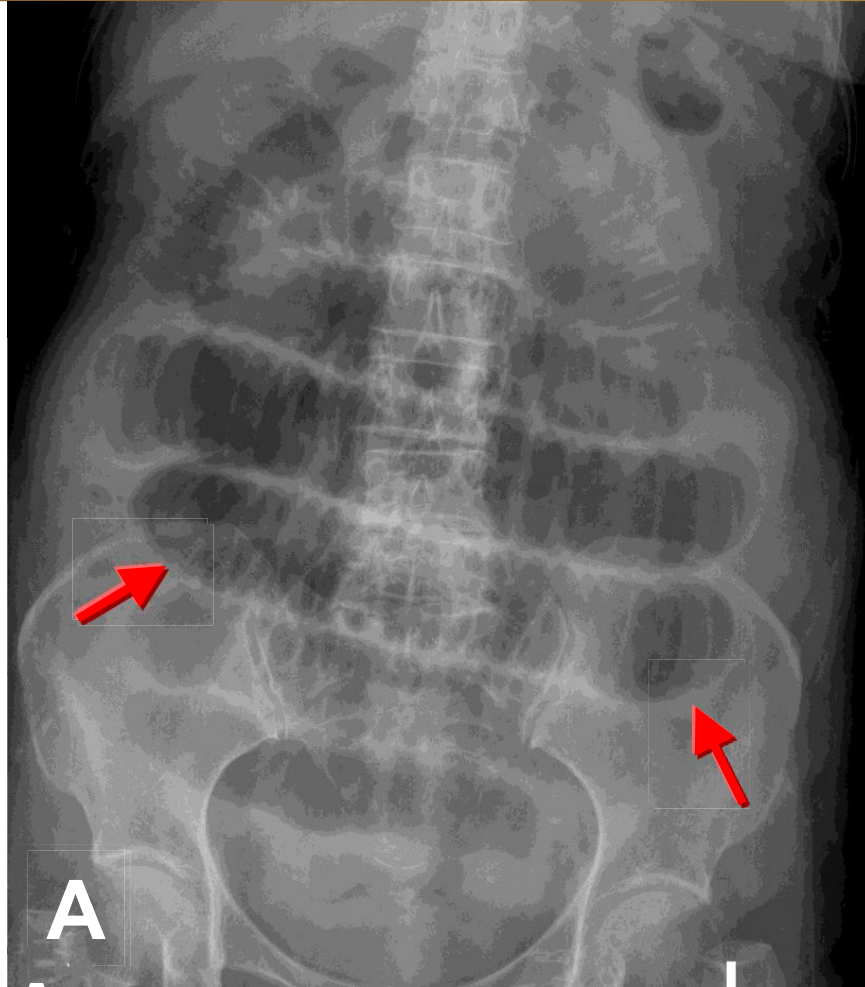


Small bowel obstruction causing mechanical ileus



Mechanical ileus means a small bowel disorder with impaired transit of intestinal contents due to intrinsic luminal obstruction or extrinsic compression. Mechanical ileus demonstrates disproportional dilatation of intestinal gas presenting with marked dilatation of small intestinal gas (arrows in A) & reduced colonic air. CT shows adhesive band causing SBO (arrows in B)