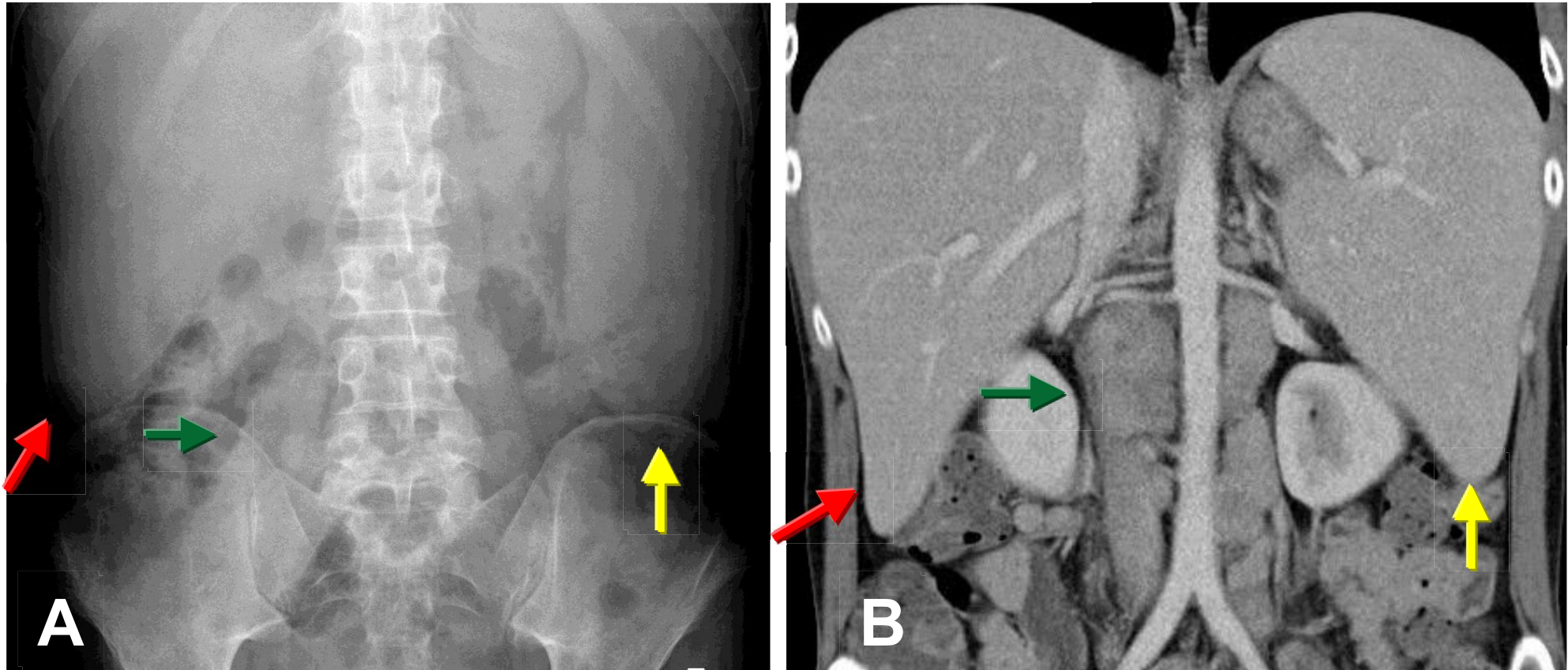


# Hepatosplenomegaly



Hepatosplenomegaly(HSM) is the simultaneous enlargement of both the liver & spleen. The common causes of HSM are infection, hematologic & metabolic disease. A case of lymphoma presents with enlarged liver (red arrow in A & B), Spleen ( yellow arrow in A & B) & para-aortic lymphadenopathy ( green arrow in A & B)