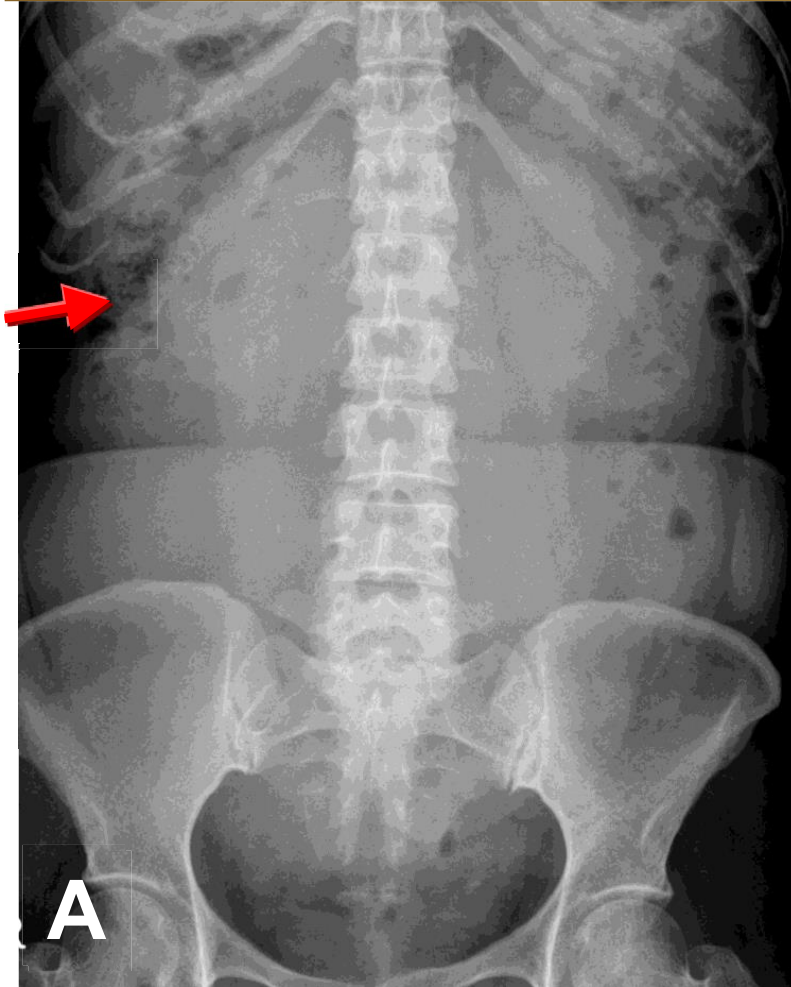


Multiple leiomyomas of uterus



Large abdominopelvic masses in women may originate from the reproductive system, peritoneum or retroperitoneum and the differential diagnosis are extensive. Often, the diagnosis can be suggested on the basis of tumor location and patient's age. The most common incidence of huge abdominopelvic mass in young women is the reproductive system such ovarian neoplasm or uterine leiomyomas (arrow in A & B).