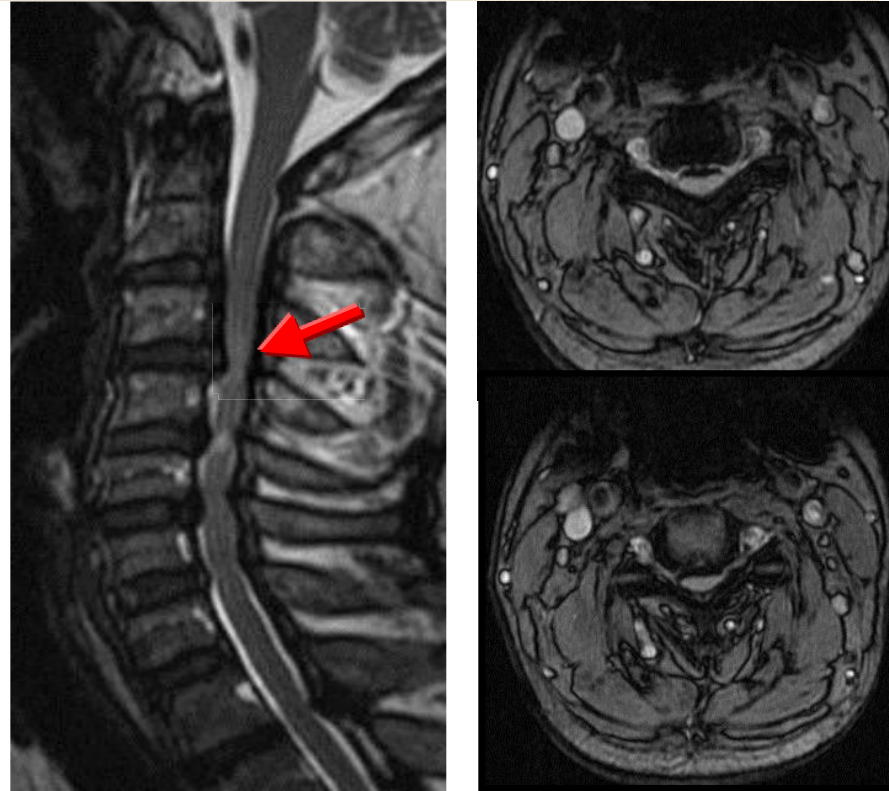


# Answer: OPLL

## Ossified posterior longitudinal ligament



- Flowing multilevel ossification posterior to vertebral bodies
- Relatively minimal DDD, absent facet ankylosis
- Narrows AP spinal canal dimension → spinal stenosis, cord compression -- T2-weighted sequences are considered the most effective in evaluation of spinal cord compression due to both the ossification and abnormal signal intensity of the spinal cord
- Cervical - 75%, thoracic - 15%, lumbar - 10%