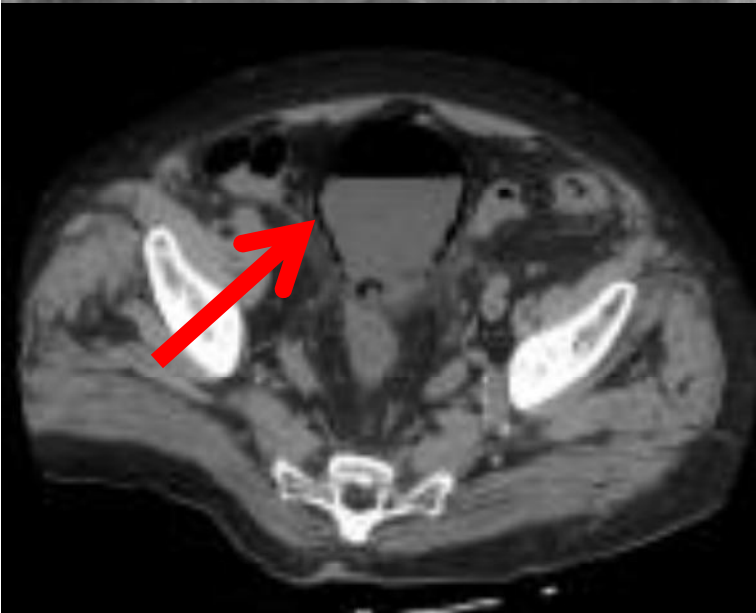
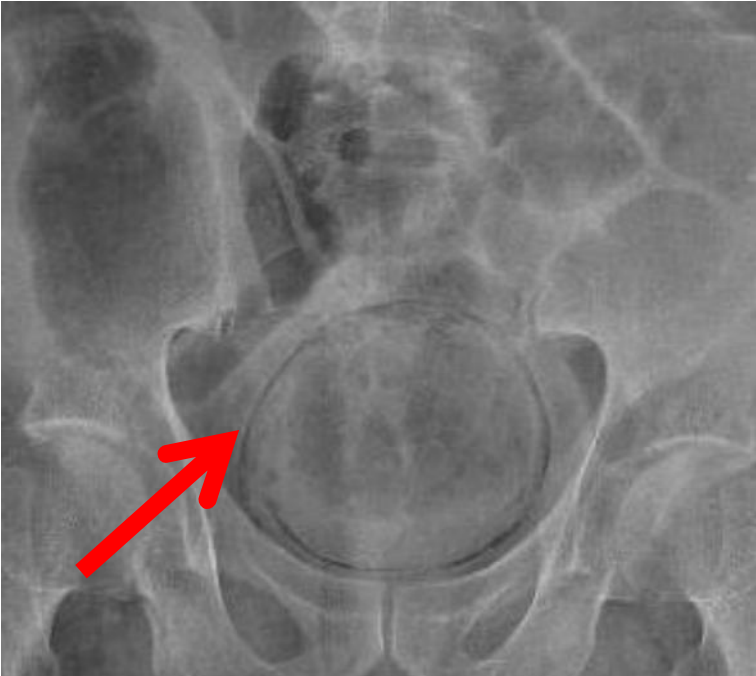


Emphysematous cystitis



Emphysematous urinary tract infections such as emphysematous cystitis are often rapidly progressive and occasionally fatal. KUB shows curvilinear or mottled areas of increased radiolucency in the region of the urinary bladder separate from more posterior rectal gas. Intraluminal gas will be seen as an air-fluid level that changes with patient position, and, when adjacent to the nondependent mucosal surface, may have a **cobblestone** or “**beaded neck-lace**” appearance. (arrow)