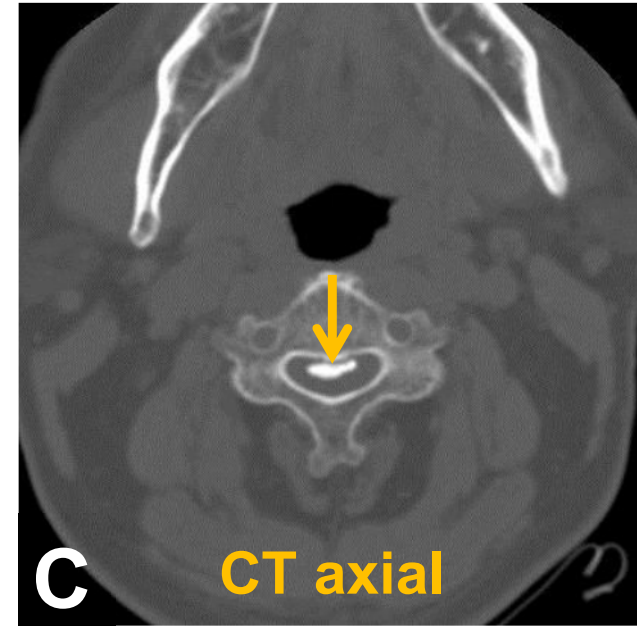
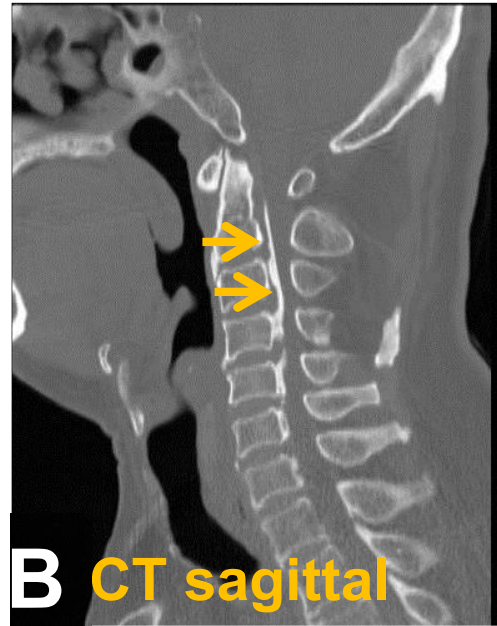


Ans: Ossification of posterior longitudinal ligament



Ossification of posterior longitudinal ligament is most commonly seen in Japanese and Easterner than Westerner. It occurs at midline posterior to cervical vertebrae with a typical flowing multi-level ossification on lateral projection (arrows in A and B) and “bowtie” on axial CT (arrow in C) or MRI. Patient may present with progressive paresis due to canal stenosis (symptomatic canal narrowing < 6 mm) and resultant cord compression.