

與大師對談
臺大醫院
張允中教授

2018-12

- 依照臨床時序，請大師模擬一線放射科醫師；於未知診斷，或者有限度臨床線索之情形下，進行閱片及解讀。
- 鑑別診斷為主要，確定診斷為次要。
 - 目的在於學習大師之影像判讀邏輯思考。
- Focus on chest images
- 大師評論本院影像品質建議及改進。
 - Protocols, techniques, etc.

CASE 1

27 Y/O MAN

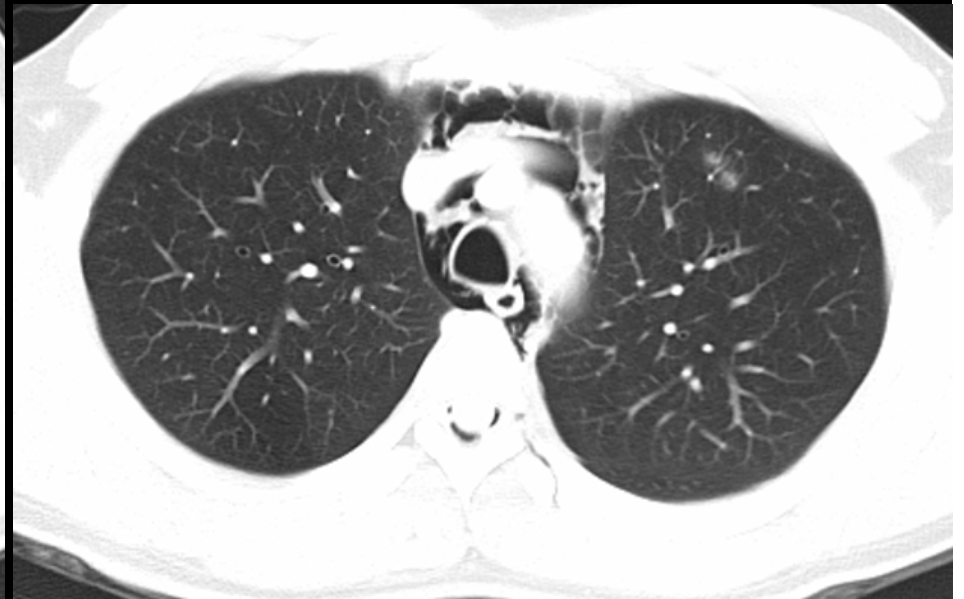
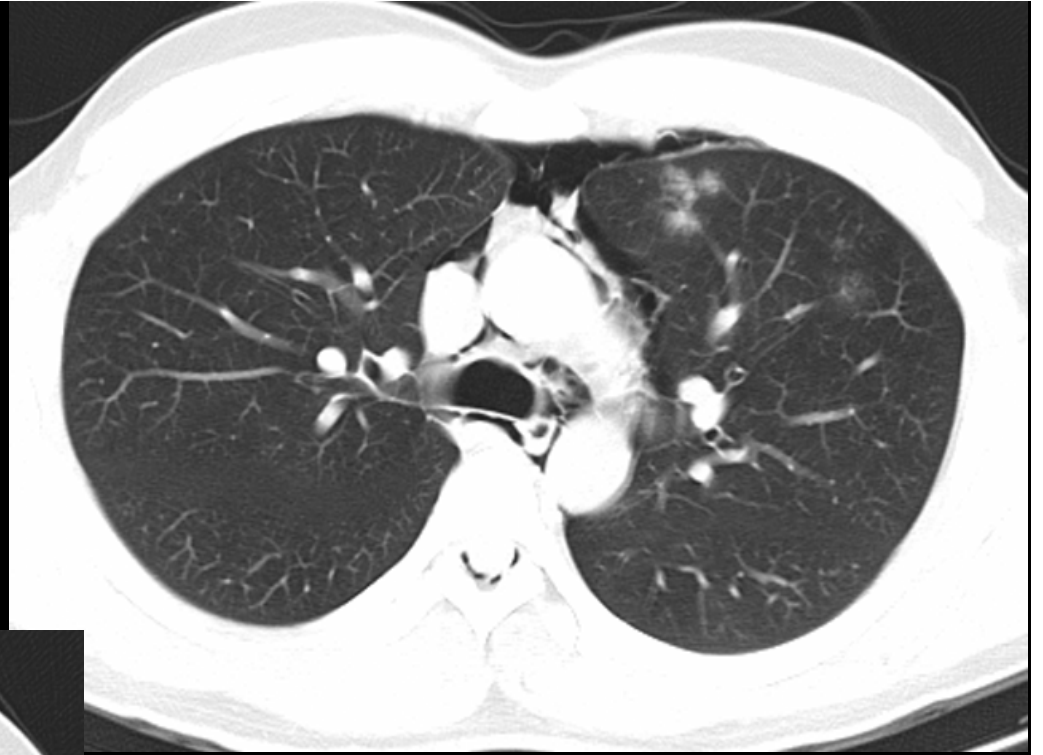
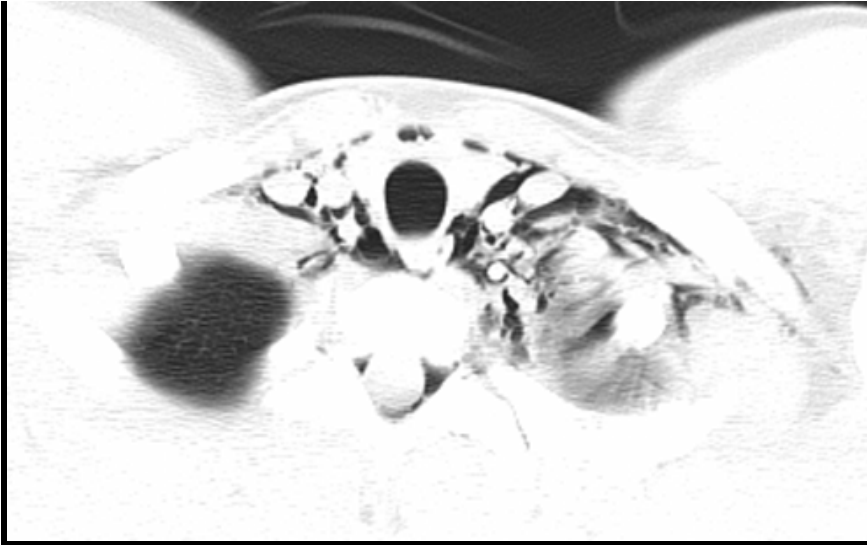
Brief history

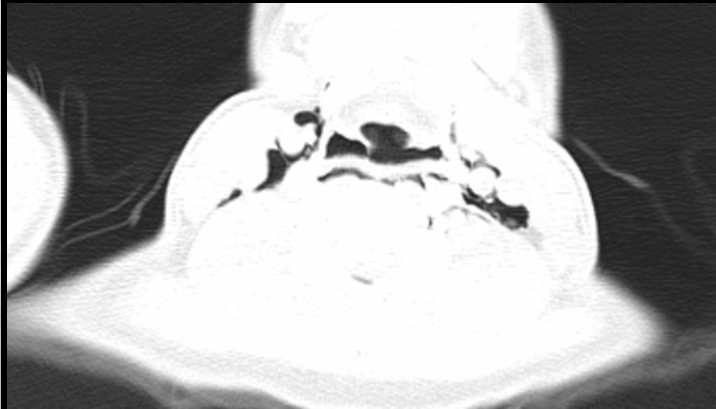
- 27 years old man
- Previous healthy
- Chief complain:
 - 被足球砸中後胸痛

Imaging

- CXR
- C-spine Lat
- Chest CT NoC







Imaging Findings

- pneumomediastinum + pneumopericardium + subcutaneous emphysema + pneumorrhachis

DDx:

- Blunt chest trauma related
- Tracheobronchial perforation, Esophagus rupture
 - penetrating chest trauma
 - Boerhaave syndrome
- Surgery related
- Asthma related
- Hamman syndrome / Macklin syndrome

Diagnosis

- Blunt trauma related condition

Clinical course

- Pain control and O2 supply.
- Symptoms relieve
- Discharge after 3 days

