

**CASE 3**

**80 YEARS OLD WOMAN**

# Brief history

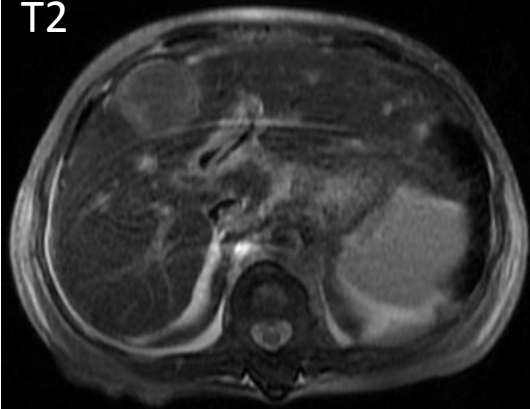
- 80 years old woman
- PHx: HTN, DM, CKD
- Chief complain:
  - Abdominal fullness sensation since six months ago, intermittent, aggravated by food intake and relieved spontaneously
  - Abdominal echo shows a tumor at S4 of liver

# Imaging studies

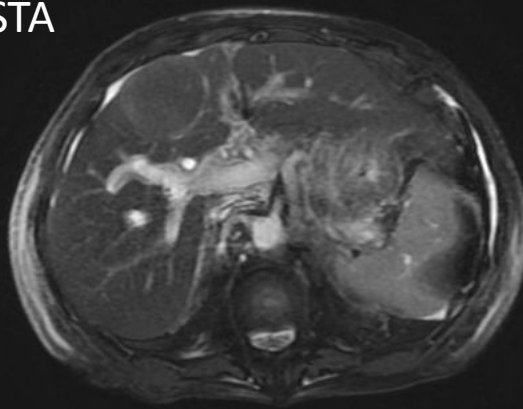
- Upper abdomen MRI (No C)
- Upper abdomen CT (No C)



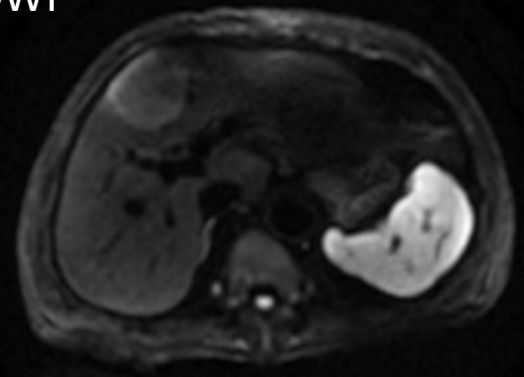
T2



FIESTA



DWI

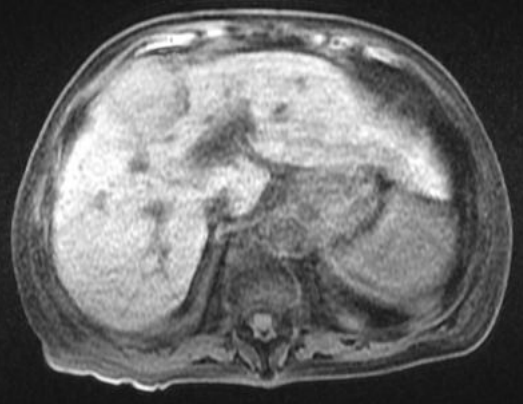


P  
A

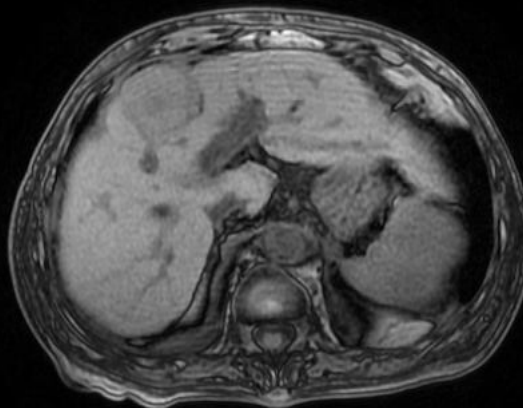
P  
A

P  
A

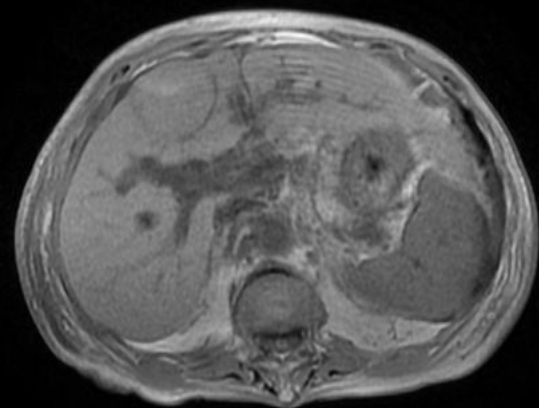
LAVA



Out phase



In phase

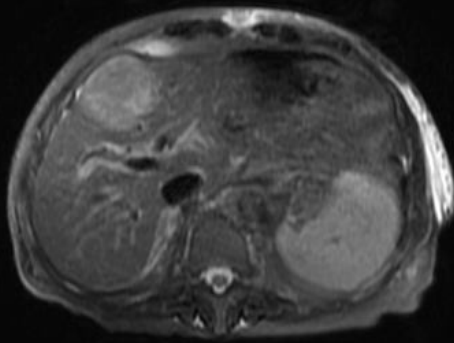


L R

L R

10 days after, +C MRI

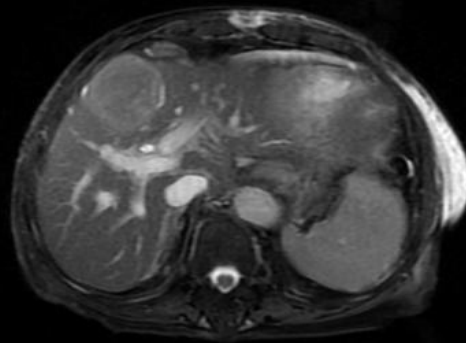
T2



L R

P  
A

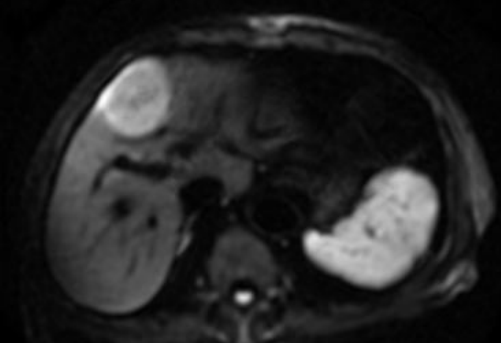
FIESTA



L R

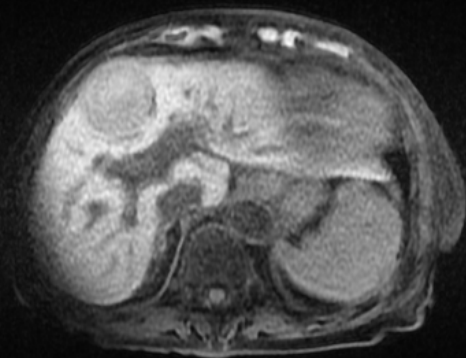
P  
A

DWI



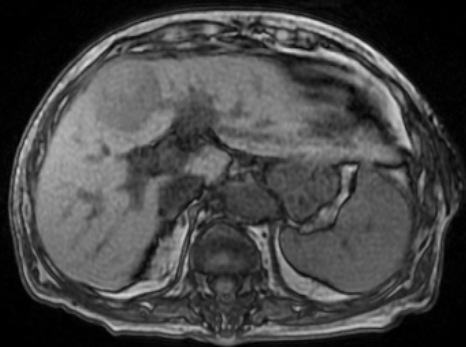
P  
A

LAVA



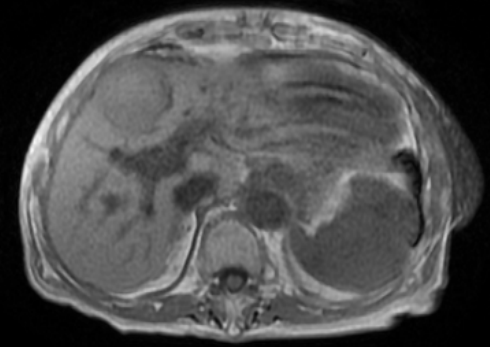
L R

Out phase



L R

In phase



A-phase

V-phase

Delay phase



# DDx:

- Without contrast medium:
  - A tumor with hemorrhage, benign or malignant?
- With contrast medium:
  - HCC