

CASE 4

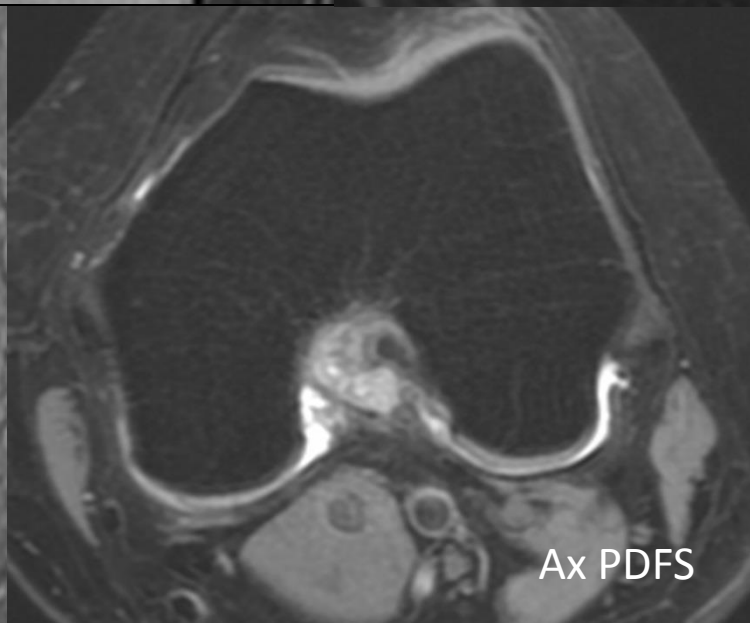
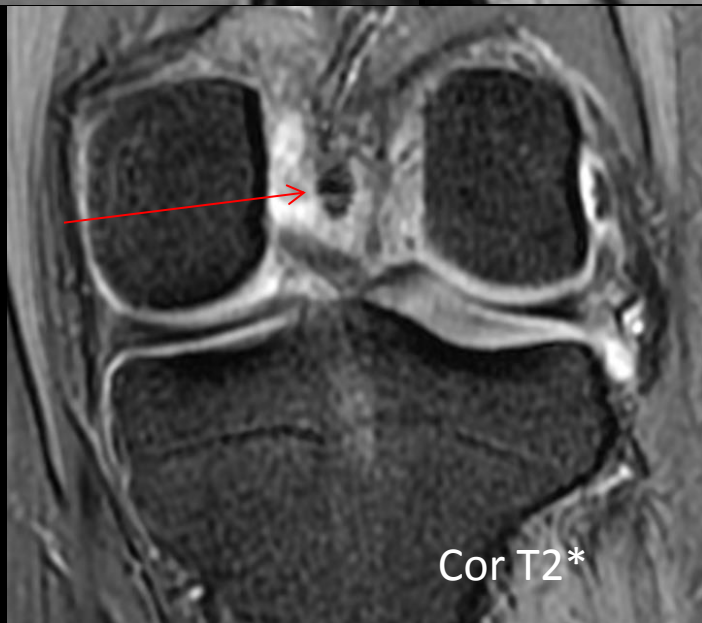
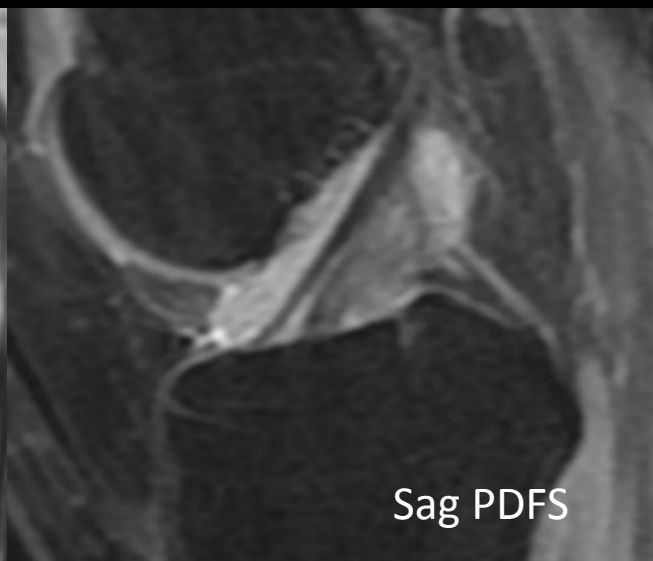
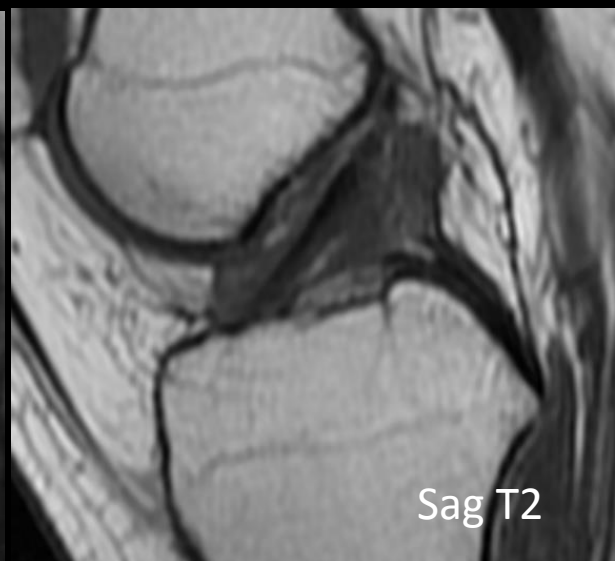
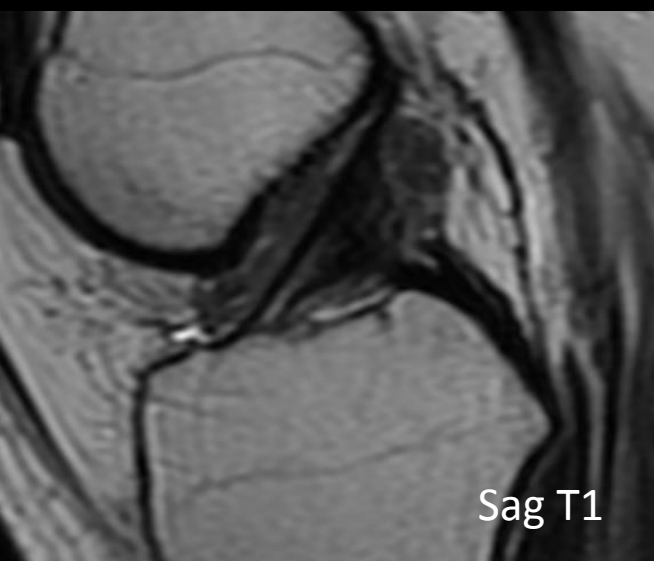
31 YEARS OLD WOMAN

Brief history

- 31 years old woman
- PHx: denied
- Chief complain:
 - On and off Left knee painful swelling for 2 yrs

Imaging studies

- 2019-08-19 L't knee MRI (No C)



DDx:

- localized synovitis
- Deposition disease
- Localized hematoma

Pathology

- OP 08/25

病理診斷：Synovium, knee joint, left, arthroscopic removal, pigmented villonodular synovitis

組織報告：The specimen submitted consists of more than ten tissue fragments, measuring up to 1.3 x 0.6 x 0.5 cm in size, fixed in formalin.

Grossly, they are gray and elastic.

All for section.

Microscopically, it shows a picture of pigmented villonodular synovitis composed of nodular proliferation of mononuclear cells with round or ovoid nuclei admixed with aggregating foamy macrophages, multinucleated foreign body giant cells, and some fibrous tissue in synovial tissue. No evident nuclear atypia or mitosis is found. The synovial tissue elsewhere reveals fibrous thickening and focal fibrinous exudate coating.

PVNS

- Knee (80%)
- the site of origin
 - intraarticular or extraarticular
- pattern of growth
 - Localized or diffuse
- diffuse intraarticular involvement

Localized Nodular Synovitis

- Synovial giant cell tumor
- Shares histologic features with PVNS
 - clinical presentations differ

Localized Nodular Synovitis of the Knee: MR Imaging Appearance and Clinical Correlates in 21 Patients

Guo-Shu Huang¹
Chian-Her Lee²
Wing P. Chan^{3,4}
Chen-Yu Chen¹
Joseph S. Yu⁵
Donald Resnick⁶

Received January 13, 2003; accepted after revision February 27, 2003.

¹Department of Radiology, Tri-Service General Hospital, National Defense Medical Center, 325, Section 2, Cheng-Kung Rd., Neihu, Taipei 114, Taiwan, Republic of China. Address correspondence to G.-S. Huang (gsh5@seed.net.tw).

²Department of Orthopaedic Surgery, Tri-Service General Hospital, National Defense Medical Center, Neihu, Taipei 114, Taiwan, Republic of China.

³Department of Radiology, School of Medicine, Taipei Medical University, 250 Wu-Hsing St., Taipei 110, Taiwan, Republic of China.

⁴Department of Radiology, Taipei Medical University, Municipal Wan Fang Hospital, 111 Hsing-Long Rd., Section 3, Taipei 116, Taiwan, Republic of China.

⁵Department of Radiology, Ohio State University Medical Center, 633 Means Hall, 1654 Upham Dr., Columbus, OH 43210.

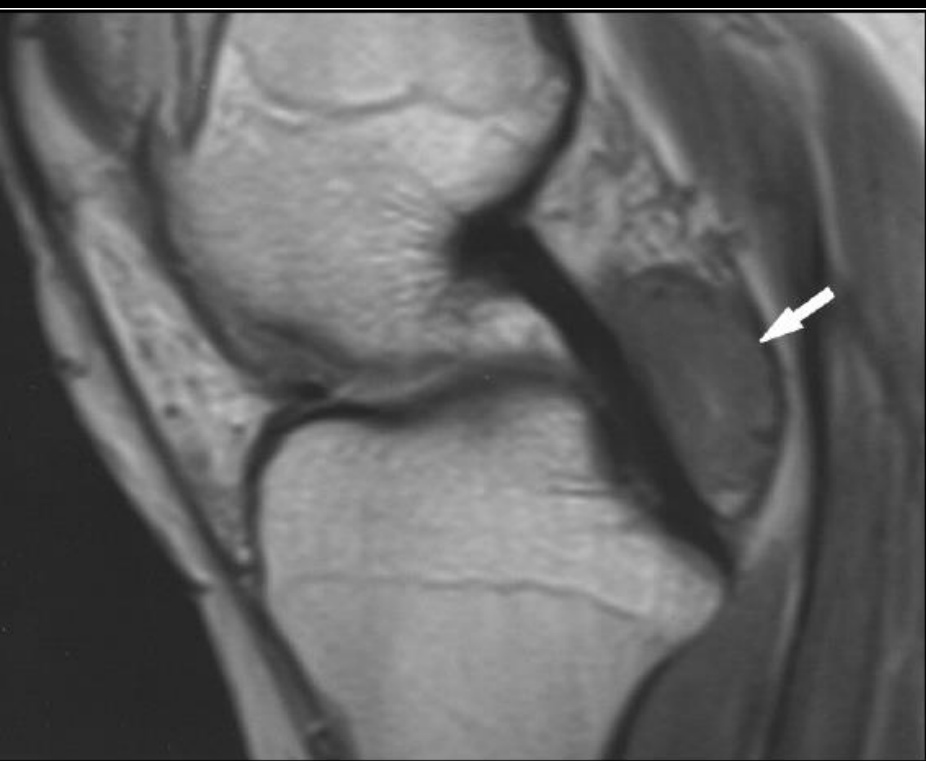
⁶Department of Radiology, Veterans Affairs Medical Center, 3350 La Jolla Village Dr., San Diego, CA 92161.

AJR 2003;181:539–543

0361–803X/03/1812–539

© American Roentgen Ray Society

- Location
 - infrapatellar > suprapatellar > intercondylar
- Posterior cruciate ligament



A



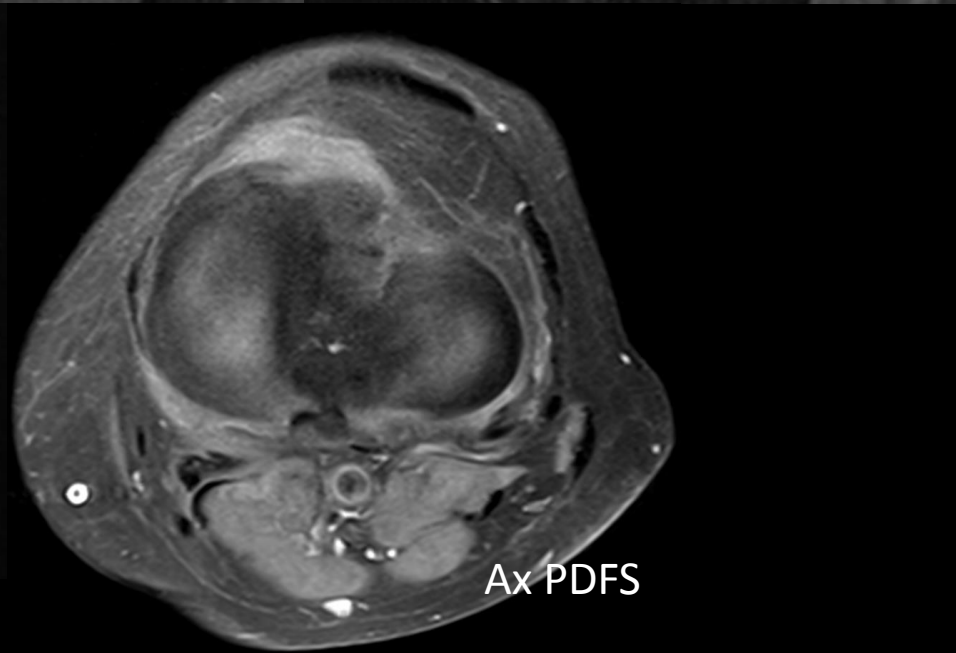
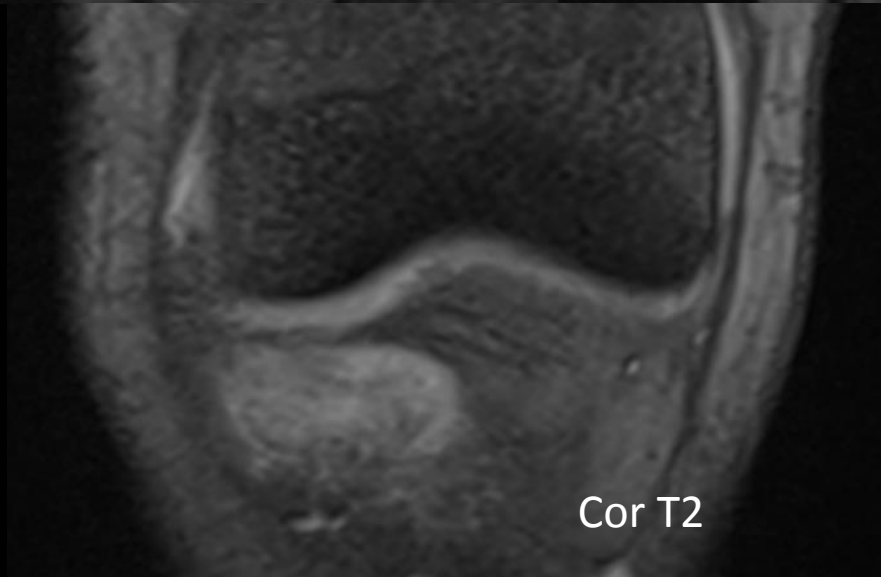
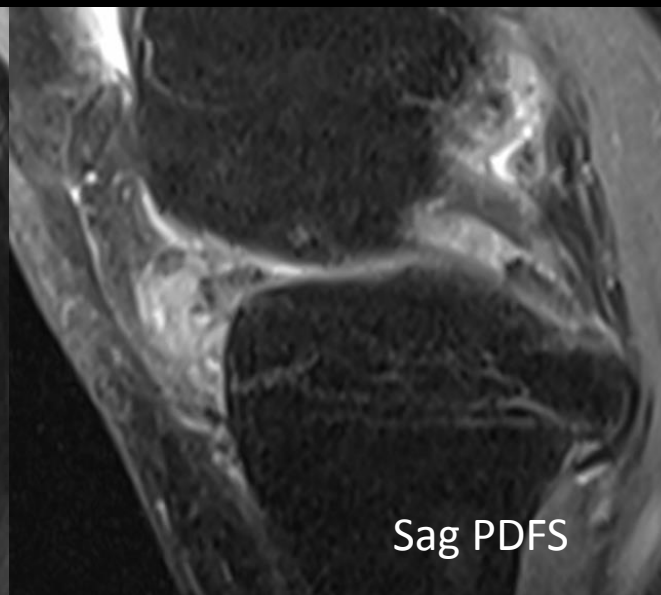
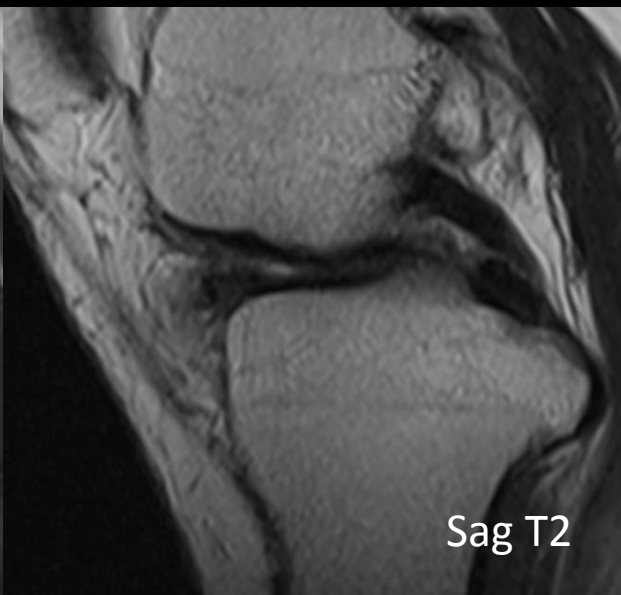
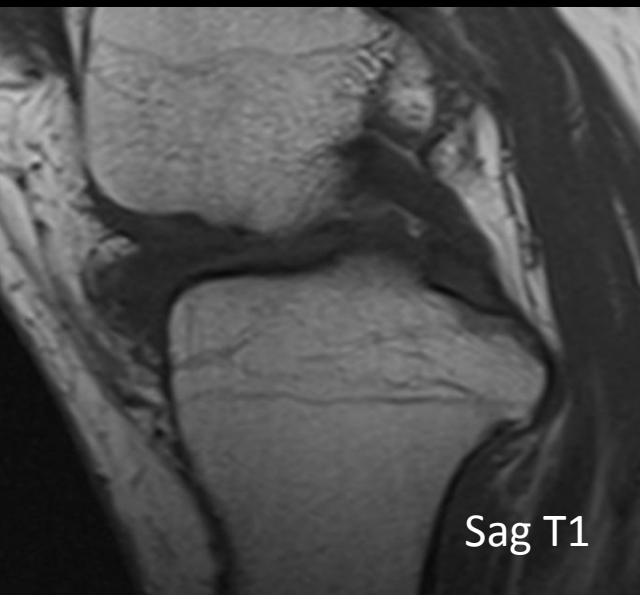
B

- DDX (infrapatellar)
 - Hoffa's disease
 - Chondroma or osteochondroma
 - gout

Suspect infrapatellar type

2020/11/11 L't knee MRI (-C)

- 72 years old woman
- Chief complain:
 - left knee pain for 3 months



- END