

**CASE 6**

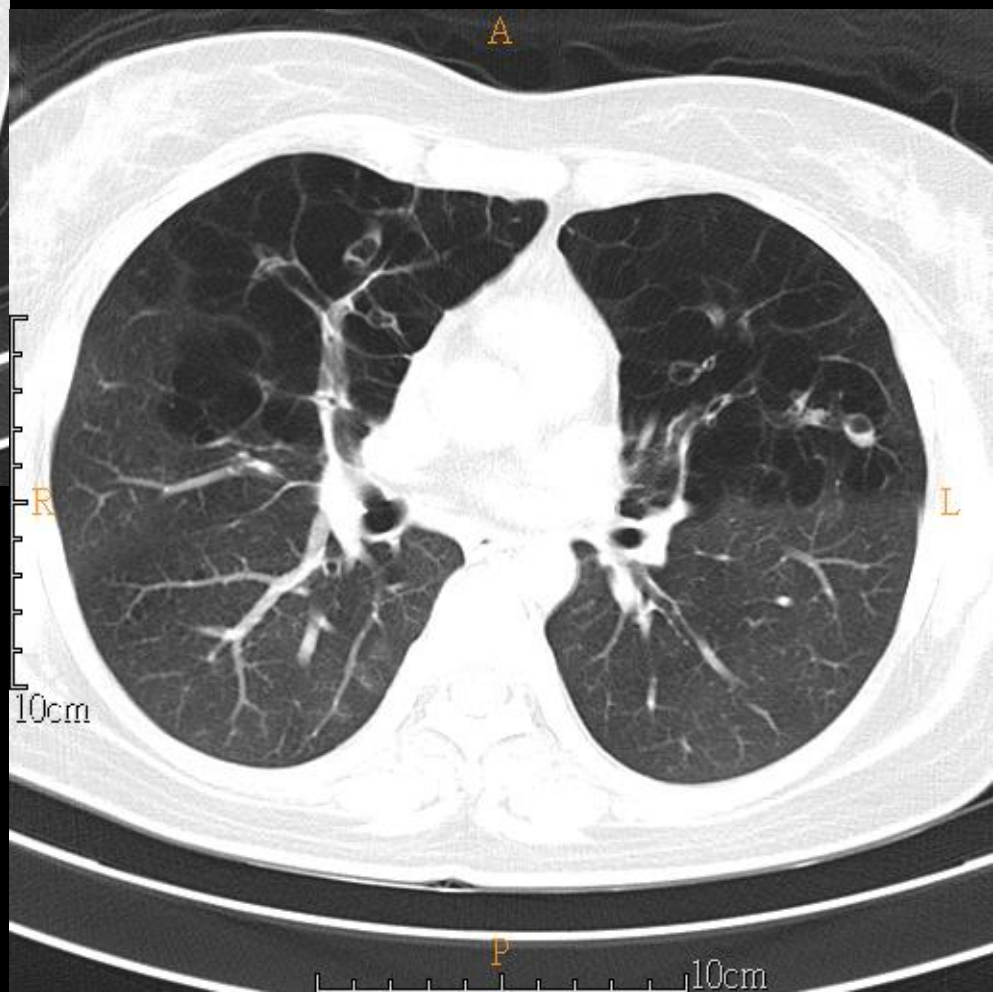
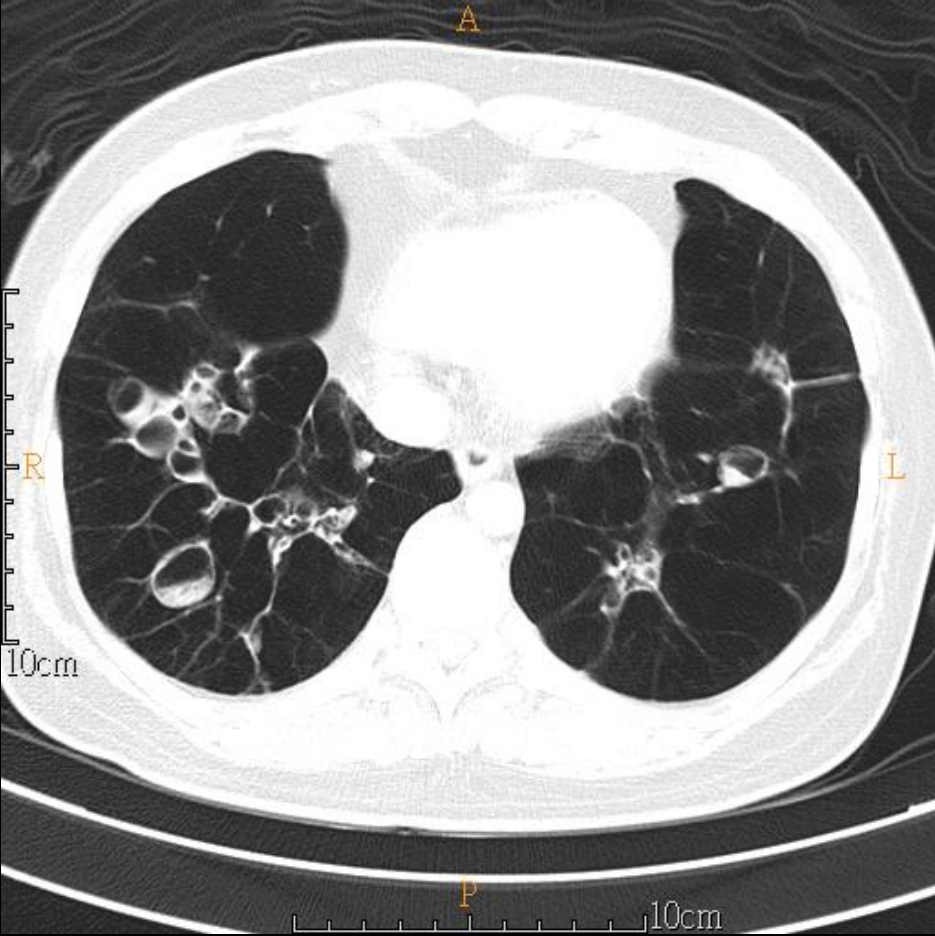
**34 Y/O WOMAN**

# Brief history

- 34 years old woman
- PHx: asthma, rare attack over past 1.5 years
- Chief complain:
  - Intermittent shortness of breath for 2-3 weeks
  - hemoptysis

# Imaging studies

- 2020/08/07 CXR
- 2020/08/29 Chest CT (NoC+C)



# DDx:

- Alpha 1-antitrypsin deficiency
- Cystic lung disease
- COPD–bronchiectasis overlap

# Alpha 1-antitrypsin deficiency

- Reduced levels of AAT protease inhibitor
- Diagnosis
  - Serum levels of AAT
  - Targeted genotyping
  - Isoelectric focusing
  - Gene sequencing

# Alpha 1-antitrypsin deficiency

- Radiography
  - Lung hyperinflation
- CT
  - Panlobular emphysema
  - Bronchiectasis

# Alpha 1-antitrypsin deficiency

- DDX
  - Centrilobular emphysema
  - Paraseptal emphysema
  - Cystic lung disease