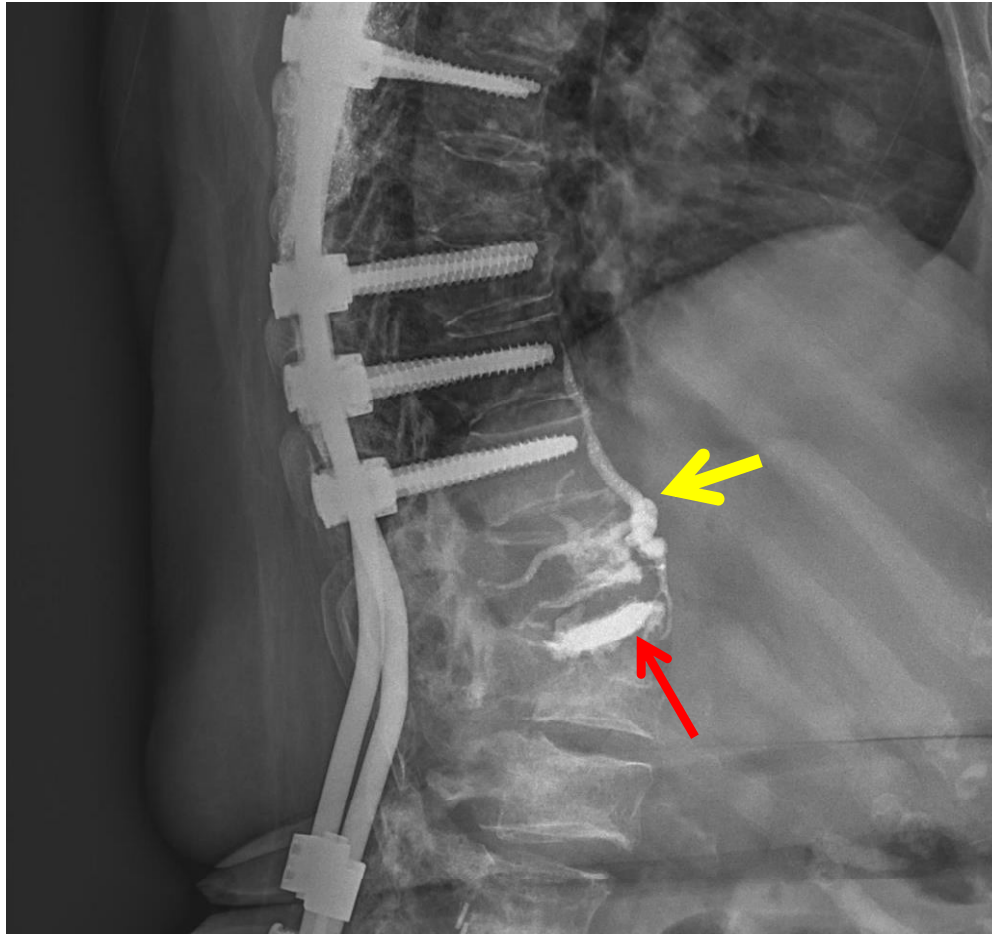


Ans: Cement embolism



Cement embolism refers to venous embolism by polymethyl methacrylate (PMMA; a type of cement) during vertebroplasty, a minimal invasive surgery for increasing vertebral stability and releasing back pain. The high density cement (red arrow) can leak to the prevertebral veins (yellow arrow), imposing the potential of pulmonary embolism.