

# ANS: Idiopathic scoliosis



Fig. 1

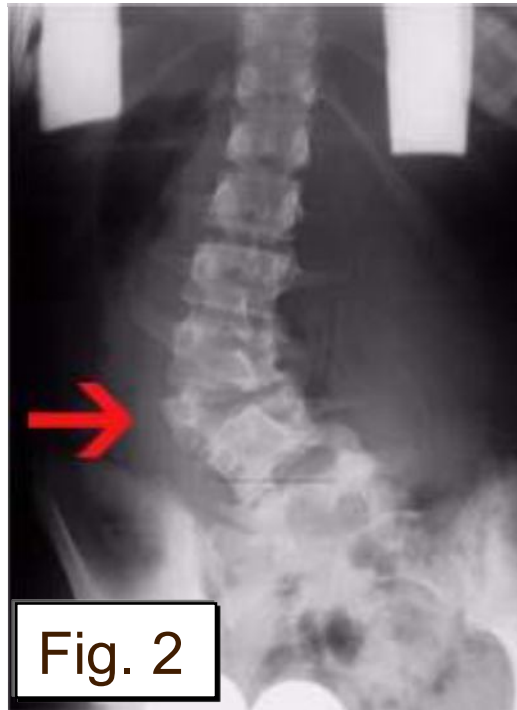


Fig. 2

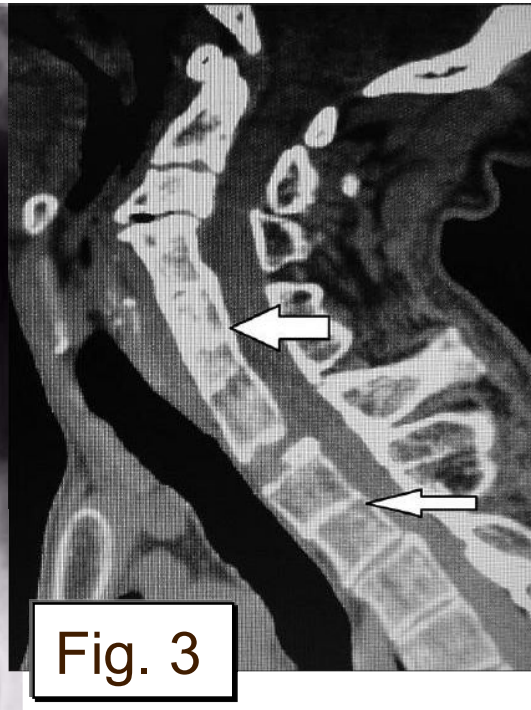


Fig. 3

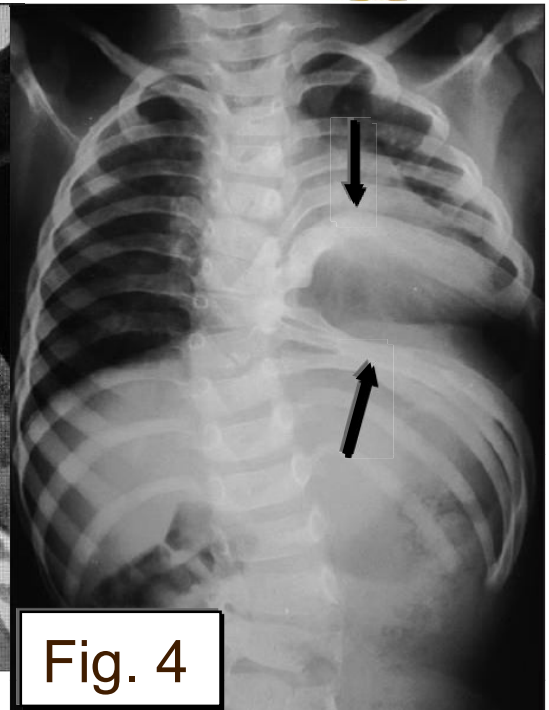


Fig. 4

Scoliosis describes any lateral deviation of spine from midsagittal plane (Fig. 1, blue arrow). Idiopathic scoliosis (Fig. 1) is the most common form of scoliosis, the etiology is unknown. Congenital scoliosis is distinguished by anomalies of the vertebrae or ribs. The most frequently observed anomalies include hemivertebra (Fig. 2, red arrow), block vertebrae (Fig. 3, white arrows), fusion of ribs (Fig. 4, black arrows) and joint deformities.