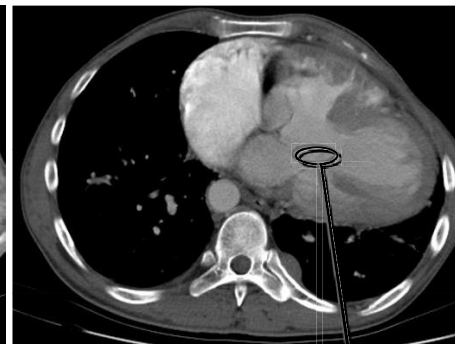
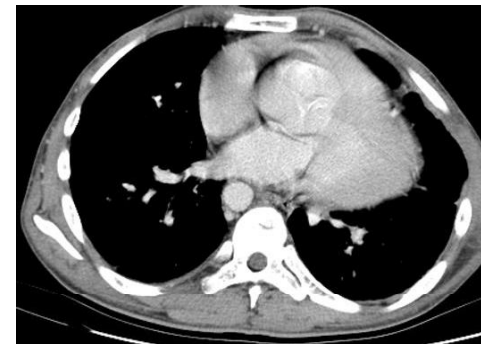
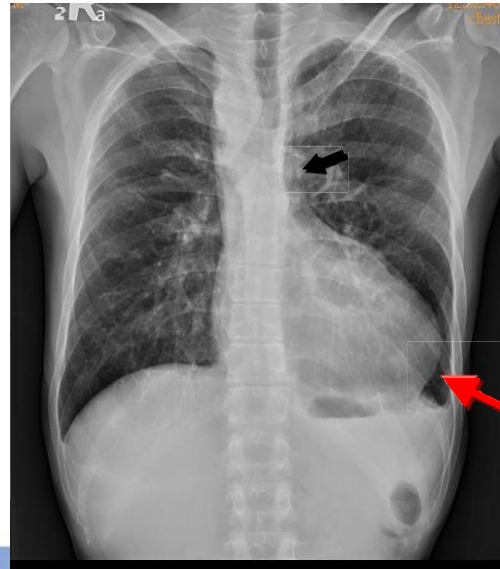
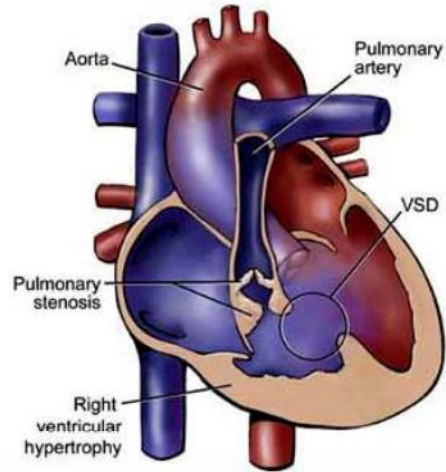


Ans: Tetralogy of Fallot



VSD

Tetralogy of Fallot (TOF) is one of the most common cyanotic congenital heart disease.

Classically characterised by four features : (1) ventricular septal defect (VSD), (2) right ventricular outflow tract obstruction (infundibular stenosis, hypoplastic pulmonary valve annulus, bicuspid pulmonary valve, and / or hypoplasia of pulmonary artery) (3) overriding aorta (4) right ventricular hypertrophy.

Plain films may classically show a "boot shaped" heart with an upturned cardiac apex (red arrow) due to right ventricular hypertrophy and concave pulmonary arterial segment (black arrow).