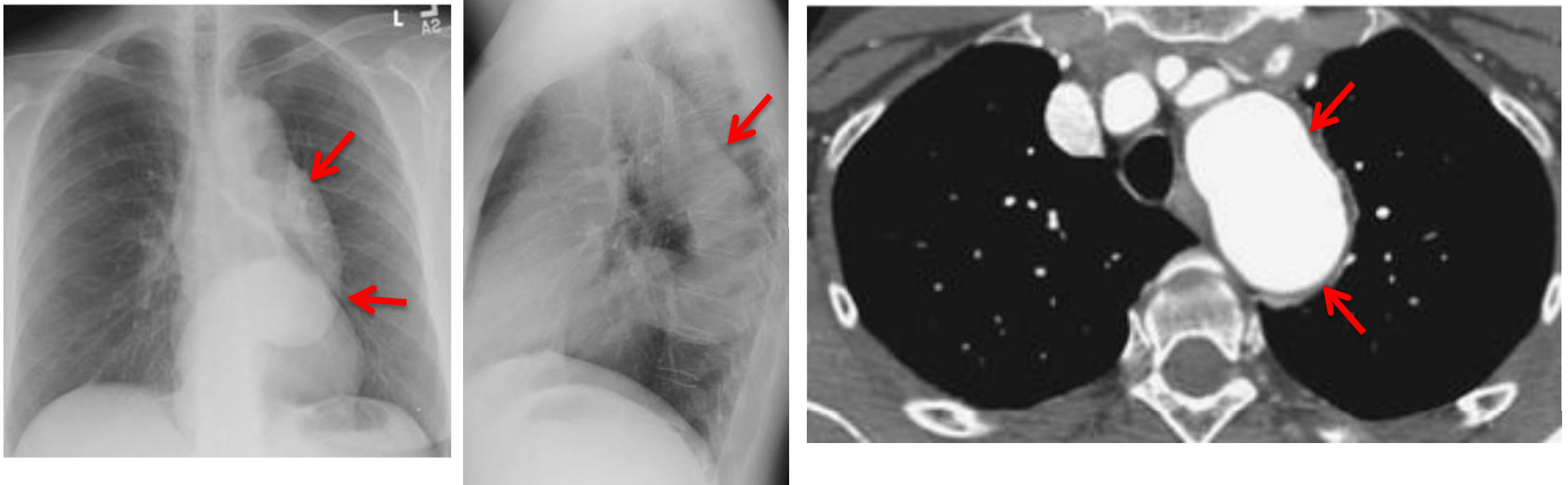


Thoracic aortic aneurysm



- * Thoracic aortic aneurysm is defined as an aortic diameter greater than 4 cm.
- * The most common etiology is atherosclerosis. The most common location is at the junction of the aortic arch and descending aorta.
- * CXR shows a tortuosity and dilation of the thoracic aorta (arrows).
- * CT shows fusiform dilation of the aortic arch (arrows).
- * Imaging can assess the aneurysms includes size, location, and relationship with branch vessels, as well as the morphological type of aneurysm.