

CASE 2

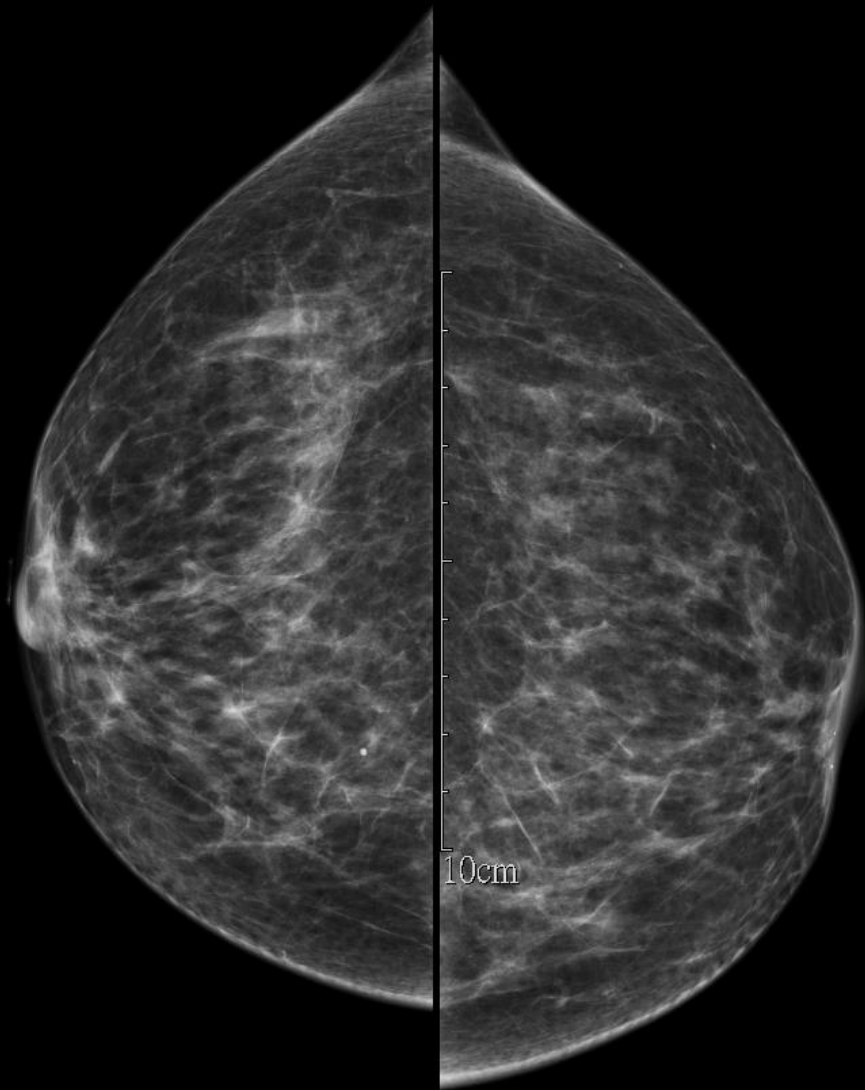
75 Y/O WOMAN

Brief history

- 75 yeas old woman
- PHx: HTN
- Chief complain :
 - Breast Mass noted.

Imaging study

- 2020 Bilateral mammography
- 2020 Sonography



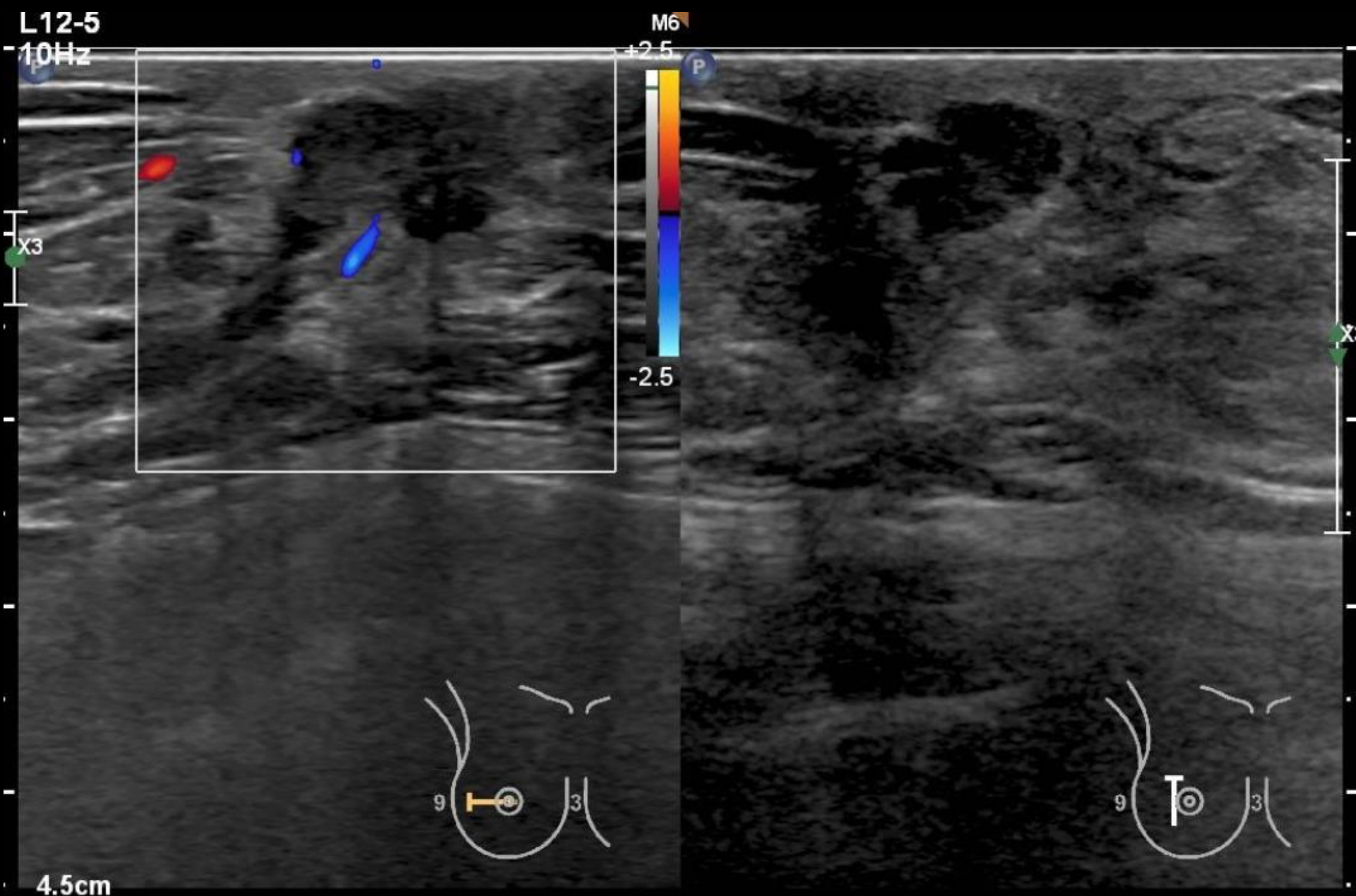
30Hz
RS
Z 1.0



+ Dist 15.1 mm
x Dist 9.56 mm
◇ Dist 10.8 mm



P



L12-5

10Hz

M6

+2.5

-2.5

X3

X

9

9

3

3

4.5cm

Pathology result

- Invasive ductal carcinoma